

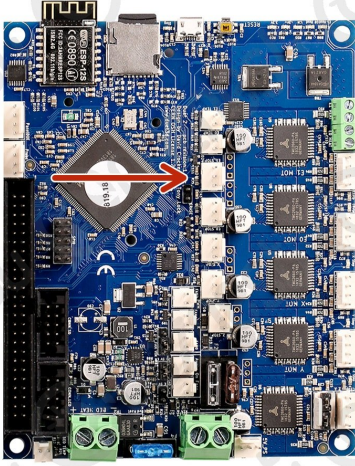


How To Connect A Software Emergency Stop Button

Written By: Ryan Lock



Step 1 — Wiring



- ① This guide is not for WorkBee Z1+ Owners. The Emergency Stop on the WorkBee Z1+ is pre-wired inline with the Power Supply.
- Wire the Emergency Stop into the Extruder 1 Stop input on the controller.
- The two wires go into the outside pins, leaving the middle empty.
- ① Polarity is not a concern.

Step 2 — Programming – Normally Closed



- ① This will configure a Normally Closed Emergency Stop. For a Normally Open Stop proceed to Step 3.
 - Under File Management > System click on 'config-user-settings.g'. Then add the following lines
 - ; Configure Software Emergency Stop
 - M950 J1 C"!e1stop" ; Configure Pin
 - M581 P1 T0 S0 ; Configure External Emergency Stop
 - M582 T0 ; Check External Trigger
 - Press Save.
- ⚠ Press the software emergency stop in the top right corner to restart the controller.

Step 3 — Programming – Normally Open



① This will configure a Normally Open Emergency Stop.

- Under File Management > System click on 'config-user-settings.g'. Then add the following lines

- ; Configure Software Emergency Stop

- M950 J1 C"e1stop" ; Configure Pin

- M581 P1 T0 S0 ; Configure External Emergency Stop

- M582 T0 ; Check External Trigger

- Press Save.

⚠ Press the software emergency stop in the top right corner to restart the controller.

Thanks for following the guide. Any issues, please contact us!