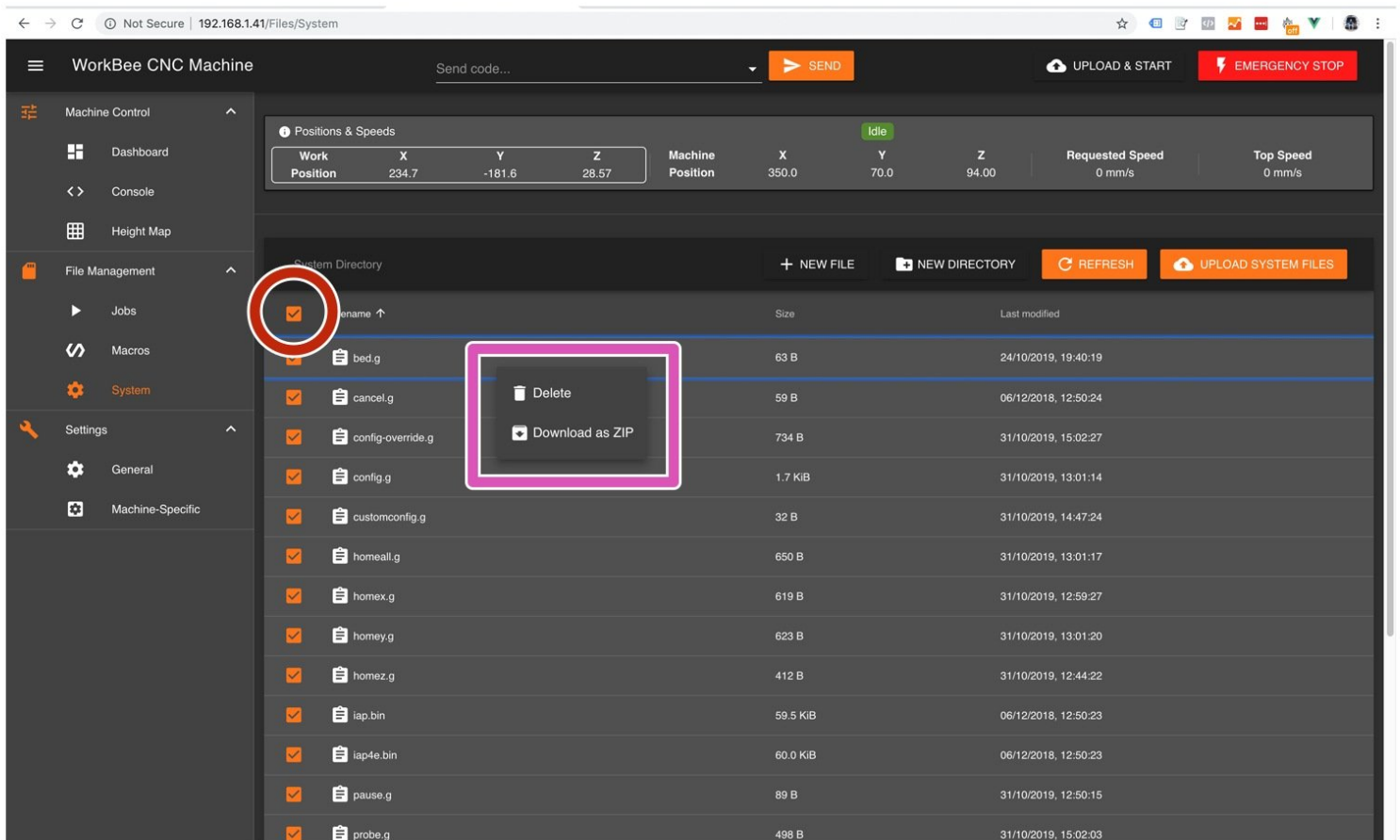




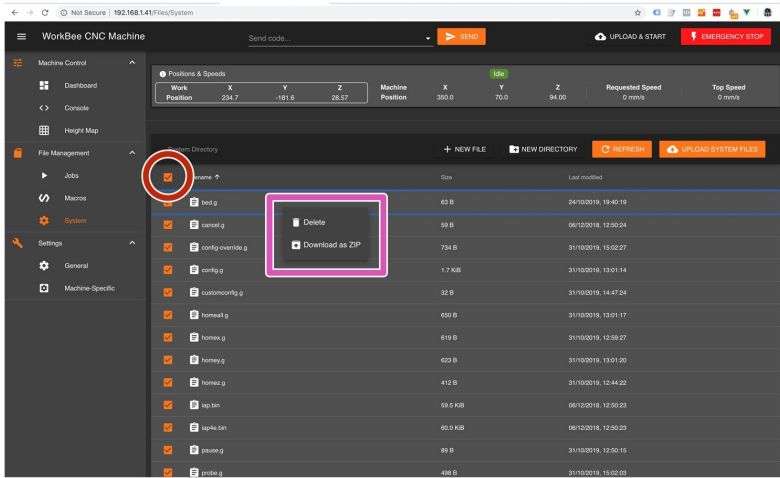
Update WorkBee Firmware

This guide will cover updating WorkBee firmware from a previous version.

Written By: Ryan Lock



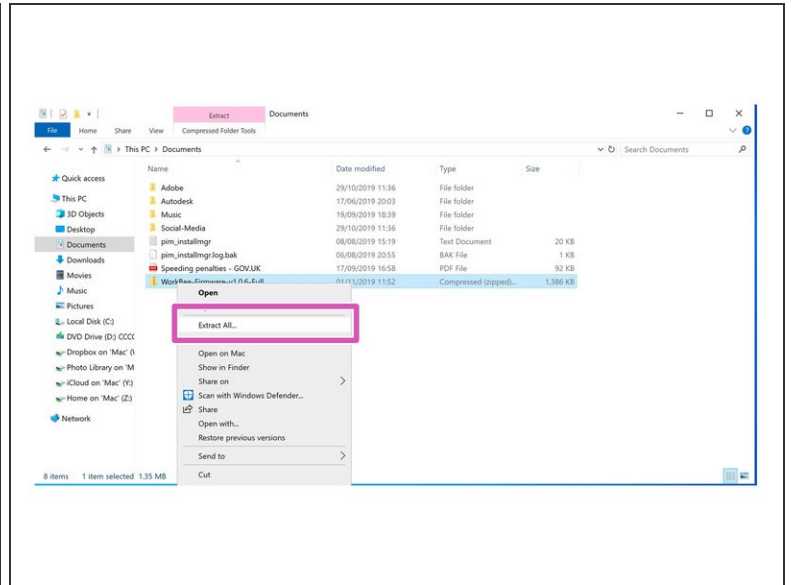
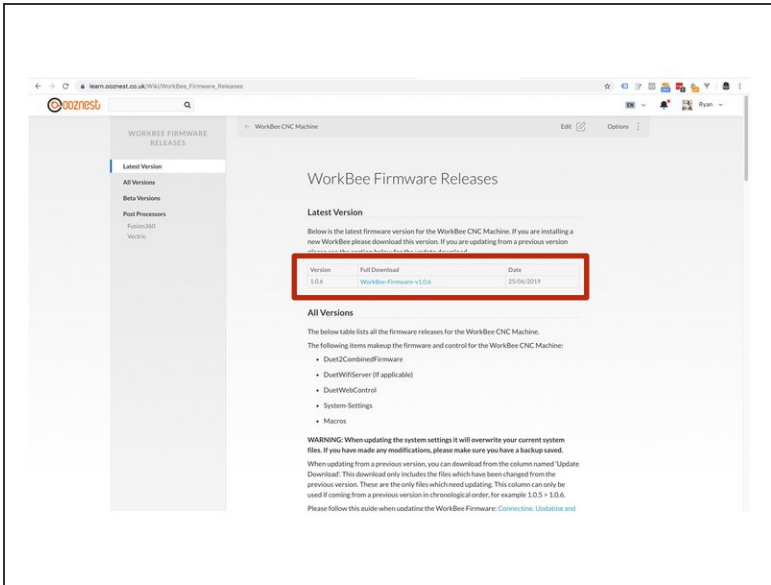
Step 1 — Backup System



⚠ Only follow this guide if you are updating WorkBee Firmware from a previous version. If installing from new please follow these guides: [3. Connecting and Commissioning - V2.0](#)

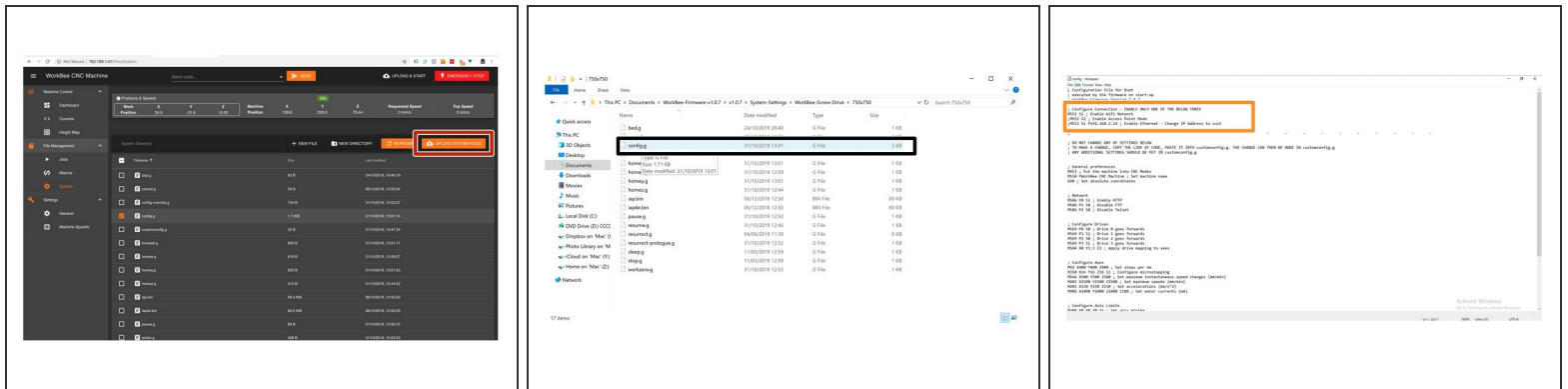
- Navigate to File Management > System. Select all files using the top selection box.
 - Right click on any file and press Download as ZIP.
- **i** Keep this ZIP file somewhere safe on your computer.
- Navigate to File Management > Macros. Repeat the above steps.

Step 2 — Download Latest Firmware



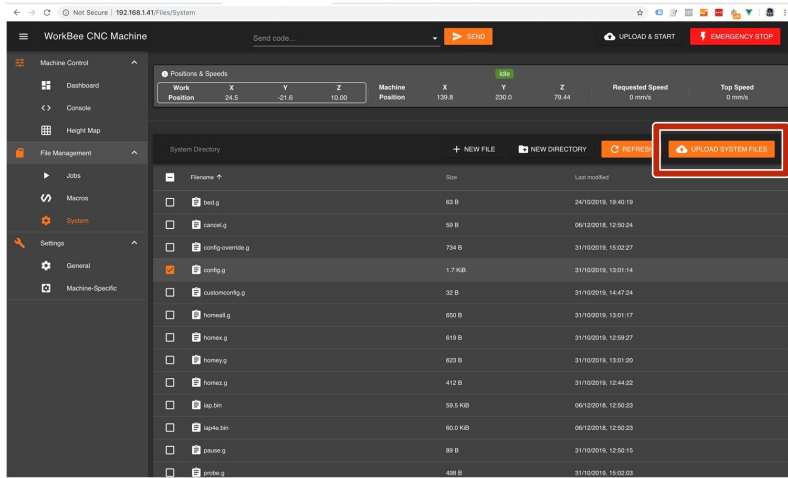
- Follow this link and download the latest firmware at the top of the page.
- Unzip the folder to somewhere on your computer.
- ⚠ Do not unzip any folders inside this one.

Step 3 — Upload System Settings



- In WorkBee Control Press 'Upload System Files' Under File - Management > System. Navigate to the newly extracted WorkBee firmware folder, navigate to System Settings. Choose the Machine Drive and Size folder. Once the folder is open right click on config.g and click edit.
- Insure the Network settings are correct for your setup.
 - ✦ For Wifi connected to an external network, no changes are needed.
 - ✦ For Wifi Connected as an Access Point, add a semicolon in front of M552 S1 and remove the semicolon from the front of M552 S2, save and close this file.
 - ✦ For Ethernet Connected directly to a computer, add a semicolon in front of M552 S1 and remove the semicolon from the front of M552 S1 P192.168.2.14, change the IP Address to suit.
 - ℹ If you don't know what your network settings are, you can open config.g from the backup files downloaded in Step 1.
- Save and close config.g. Except from customconfig.g select all files inside that folder, and click open to upload them to the Duet.
- ⚠ The controller should reboot automatically after the upload is complete. If not please press the emergency stop button to force restart the controller.

Step 4 — Updating Duet Firmware & WorkBee Control



- In WorkBee Control Press 'Upload System Files' Under File - Management > System.

- Navigate to the new unzipped firmware folder and select "Duet2CombinedFirmware.bin"

⚠ The controller should reboot automatically after the update is complete. If not please press the emergency stop button to force restart the controller.

- Repeat the above, but this time for DuetWifiServer.bin (If applicable)
- Do not do this step if you have the ethernet version.
- Repeat the above, but this time for WorkBeeControl.zip
- ① Updating your WorkBee Firmware is now complete. It is recommended you now test your WorkBee following this guide: [4. Testing Your WorkBee](#)

Thanks for following the guide. Any issues, please contact us!