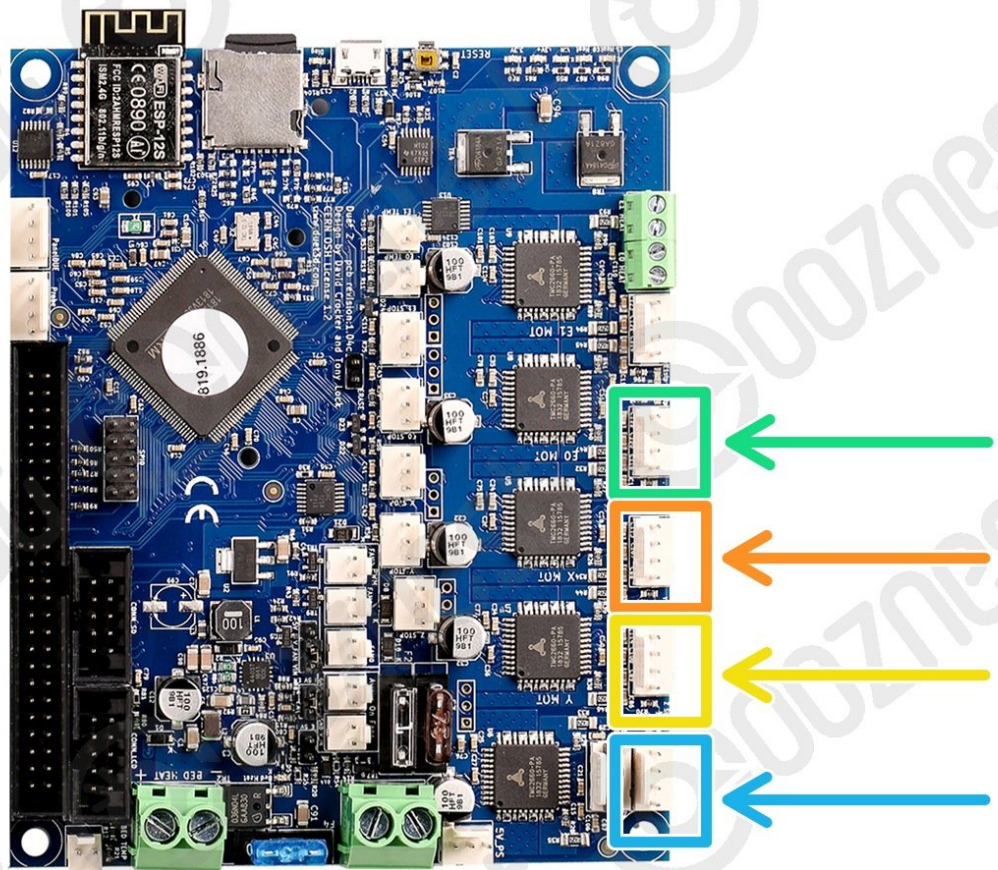




How To Wire the Duet Controller

Written By: Ryan Christy

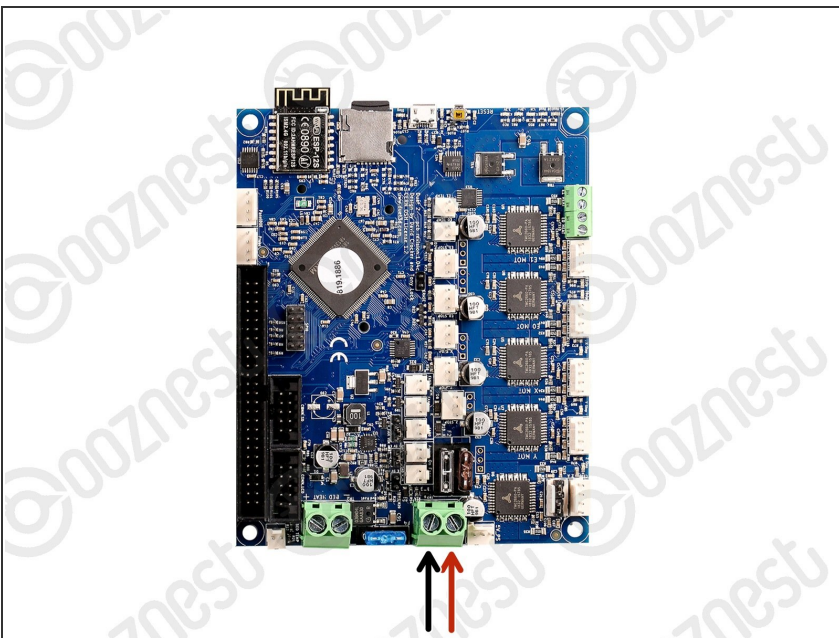


Step 1 — Wire Identifications



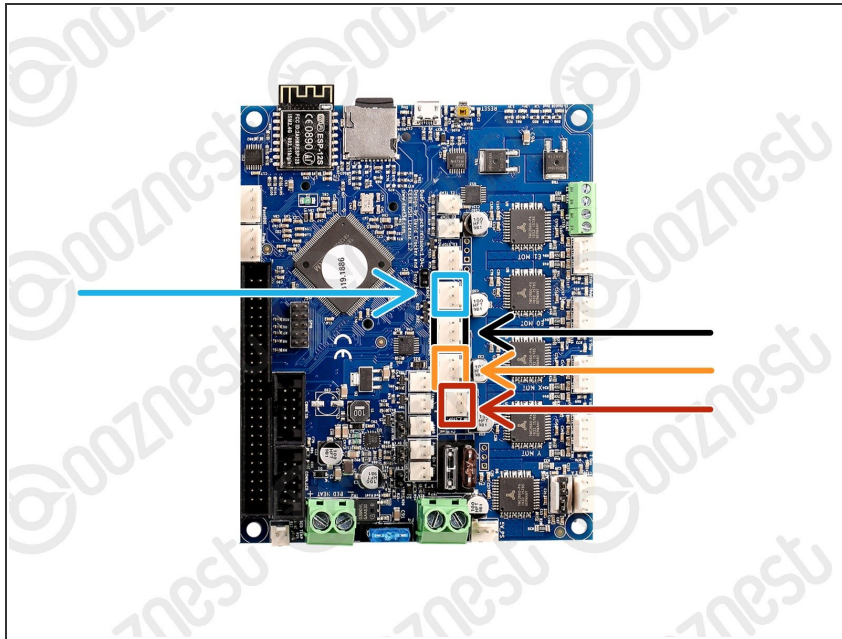
- You are going to need our Motor Wire and Limit Switch Cheat Sheet. We recommend printing it off!

Step 2 — Connecting the PSU Input Cable



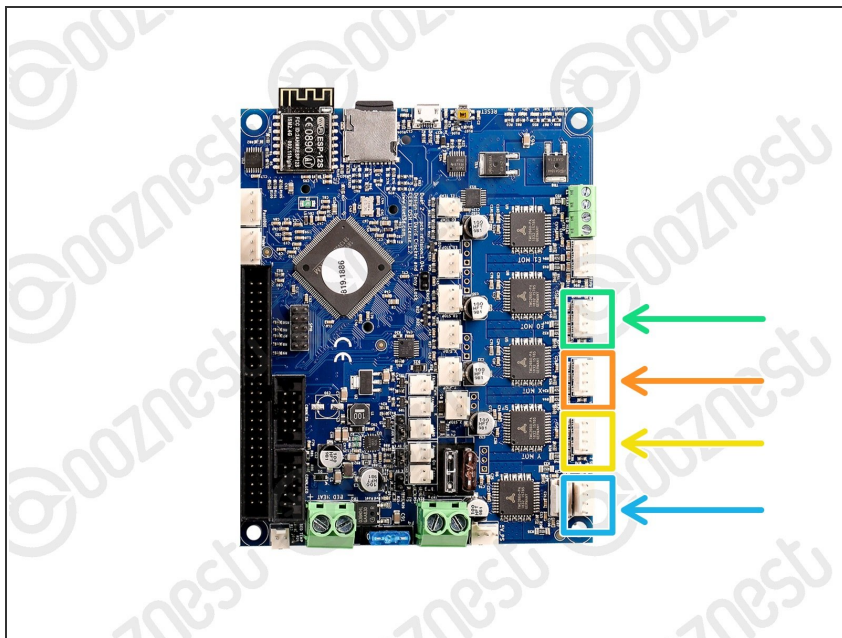
- ⚠ Make sure your power supply is switched off.
- Connect the output wire of the Emergency-Stop into the input screw terminal on the Controller.
- ⚠ Use an Insulated Flathead Screwdriver.

Step 3 — Limit Switch Wires



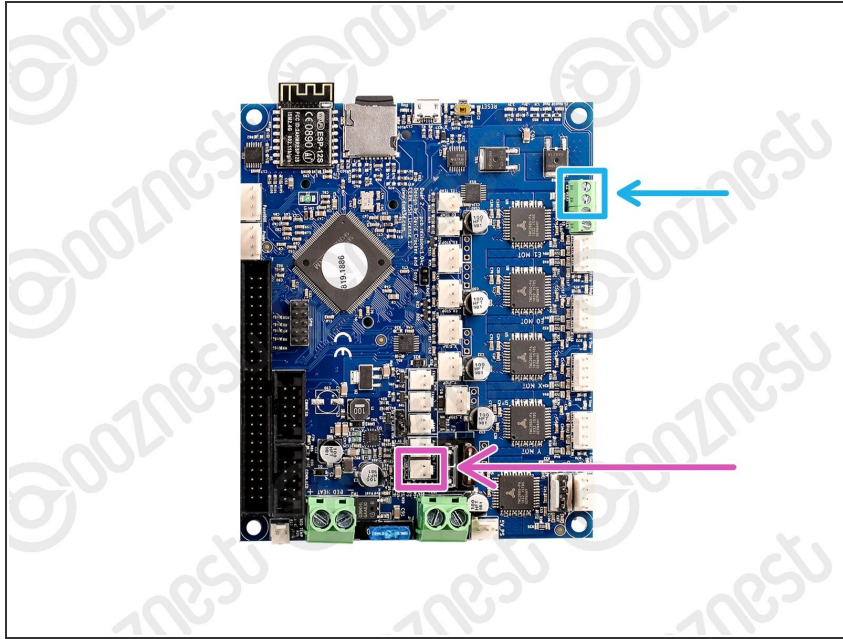
- i The connectors on the wires are keyed, so there is only one way which they can plug in.
- Plug in the limit switch wires following Image 1.
 - Limit-Switch-0 (X-Axis)
 - Limit-Switch-1 (Y-Axis)
 - Limit-Switch-2 (Y-Axis)
- The Touch Probe wire can also be plugged in.

Step 4 — Motor Wires



- Plug in the motor wires following Image 1.
 - Motor-Wire-5 (Y-Axis-Right)
 - Motor-Wire-3 (X-Axis)
 - Motor-Wire-4 (Y-Axis-Left)
 - Motor-Wire-6 (Z-Axis)

Step 5 — Extras



- Plug the Controller-Fans into the Controller following Image 1.
- Plug the LED Light Ring into the Controller following Image 1. Follow this full guide [How To Connect LED Light Ring](#)

Thanks for following the guide. Any issues, please contact us!