



3. Connecting, Updating and Configuring Your WorkBee

This guide goes over connecting to your WorkBee CNC Machine, updating the WorkBee firmware to the latest release, and setting the Machine Dimensions.

Written By: Ryan Lock

Wiki/WorkBee_Firmware_Releases

Q

WORKBEE FIRMWARE RELEASES

Latest Version

All Versions

Beta Versions

Post Processors

Fusion360

Vetric

← WorkBee CNC Machine

WorkBee Firmware Releases

Latest Version

Below is the latest firmware version for the WorkBee CNC Machine. If you are installing a new WorkBee please download this version.

If you are updating from version 1.0.6 or older please follow this guide [\[invalid guide link\]](#)

If you are updating from version 1.0.7 or greater please follow this guide [Updating WorkBee Firmware](#)

Version	Full Download	Date
1.0.7	WorkBee-Firmware-v1.0.7	01/11/2019

All Versions

The below table lists all the firmware releases for the WorkBee CNC Machine.

The following items makeup the firmware and control for the WorkBee CNC Machine:

- Duet2CombinedFirmware
- DuetWifiServer (If applicable)
- WorkBeeControl
- System-Settings

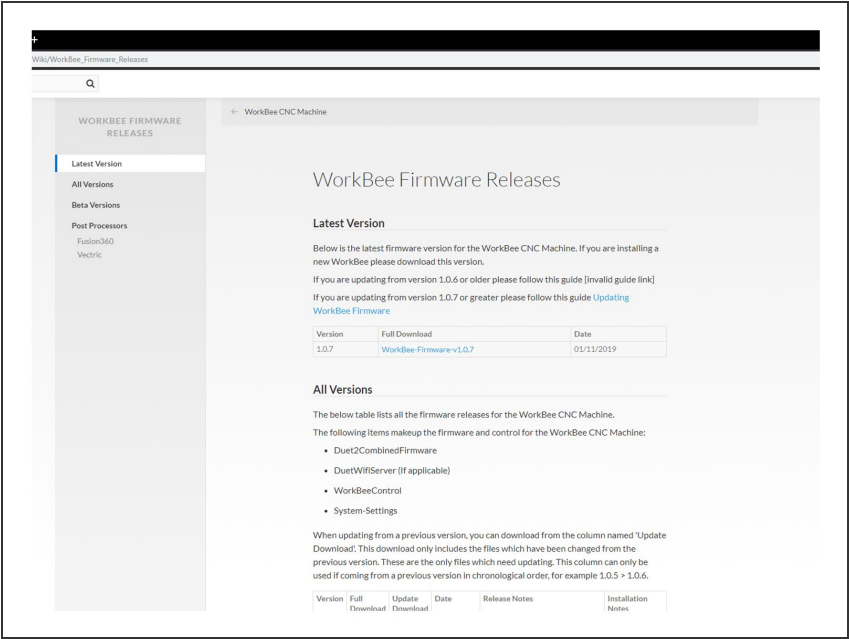
When updating from a previous version, you can download from the column named 'Update Download'. This download only includes the files which have been changed from the previous version. These are the only files which need updating. This column can only be used if coming from a previous version in chronological order, for example 1.0.5 > 1.0.6.




Version	Full Download	Update Download	Date	Release Notes	Installation Notes
---------	---------------	-----------------	------	---------------	--------------------

INTRODUCTION

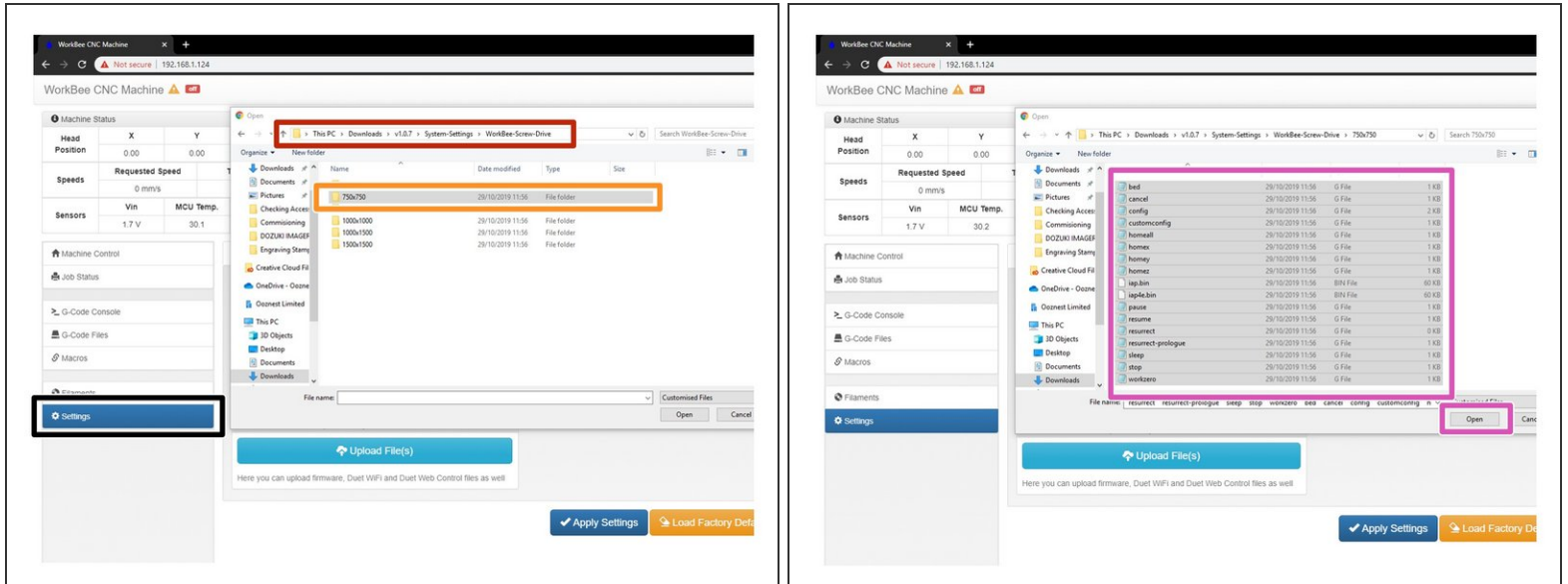
This guide goes over connecting to your WorkBee CNC Machine, updating the WorkBee firmware to the latest release.

Step 1 — Downloading Firmware



-  Download the latest firmware from: [WorkBee Firmware Releases](#)
-  Unzip the folder to somewhere on your computer.
-  Do not unzip any folders inside this one.

Step 2 — Uploading System Settings for Wifi



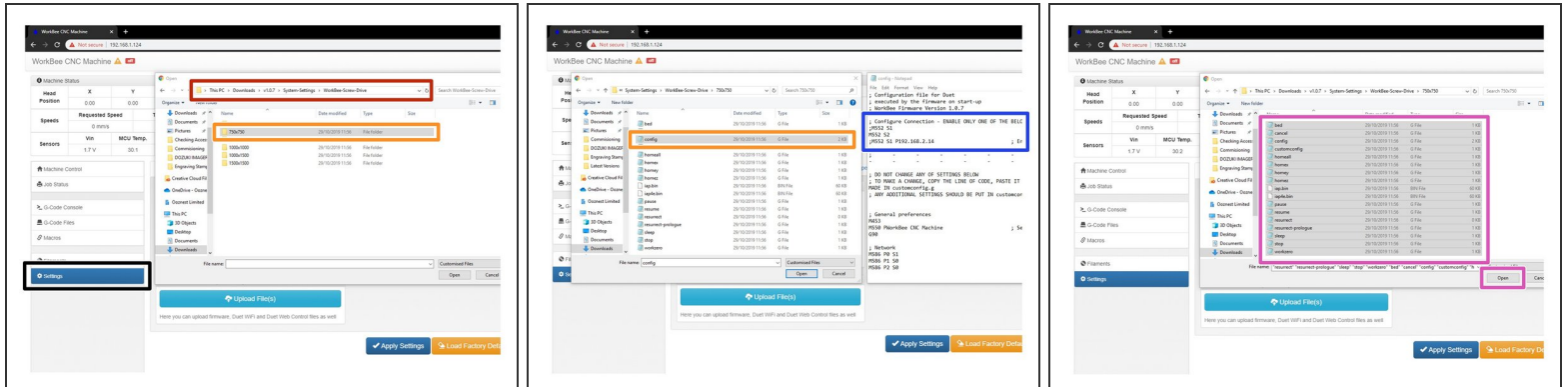
⚠ The WiFi & Ethernet Duets require a different setup format depending on how you are connecting to it, please follow the appropriate Step for your Workbee.

① For Wifi Connected to an External Network.

- Click Upload under the Settings - General Tab in the Duet Web Control.
- Open the latest version of the Firmware, navigate to System Settings.
- Choose the Machine Drive and Size folder.
- Select all files inside that folder and click open to upload them to the Duet.

⚠ The controller should automatically reboot after the upload is complete. If not please press the emergency stop button to force restart the controller.

Step 3 — Uploading System Settings for Access Point WiFi



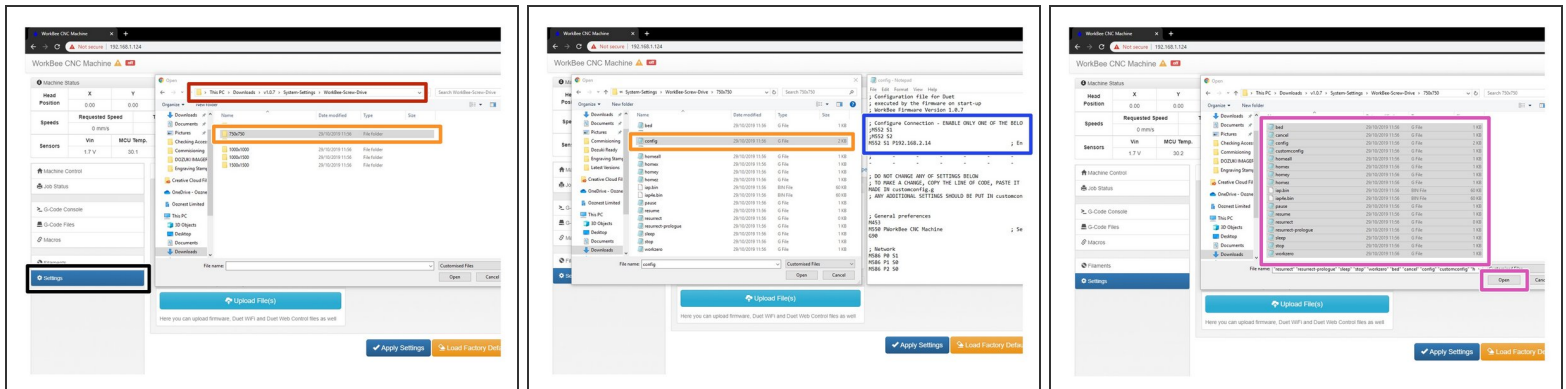
⚠ The WiFi & Ethernet Duets require a different setup format depending on how you are connecting to it, please follow the appropriate Step for your Workbee.

① For Wifi Connected as an Access Point.

- Click Upload under the Settings - General Tab in the Duet Web Control.
- Open the latest version of the Firmware, navigate to System Settings.
- Choose the Machine Drive and Size folder. Once the folder is open right click on config.g and click edit.
- In Notepad add a semicolon in front of M552 S1 and remove the semicolon from the front of M552 S2, save and close this file.
- Select all files inside that folder and click open to upload them to the Duet.

⚠ The controller should automatically reboot after the upload is complete. If not please press the emergency stop button to force restart the controller.

Step 4 — Uploading System Settings for Ethernet



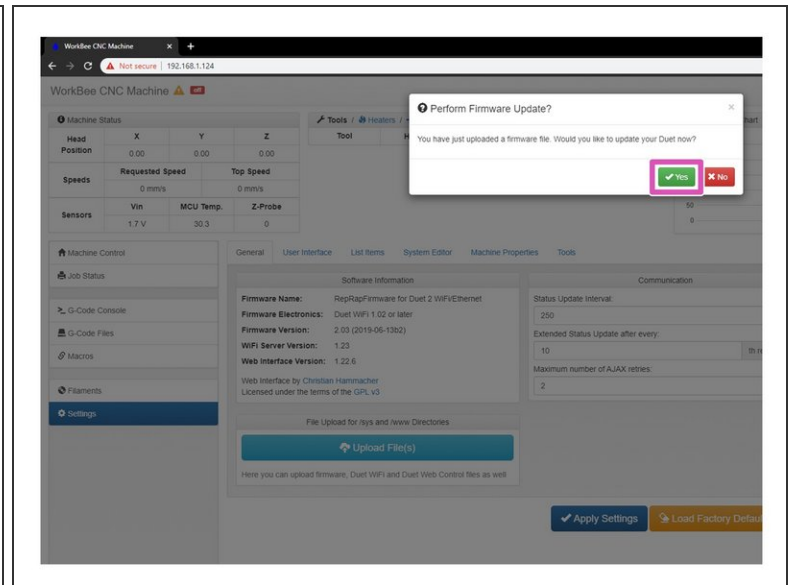
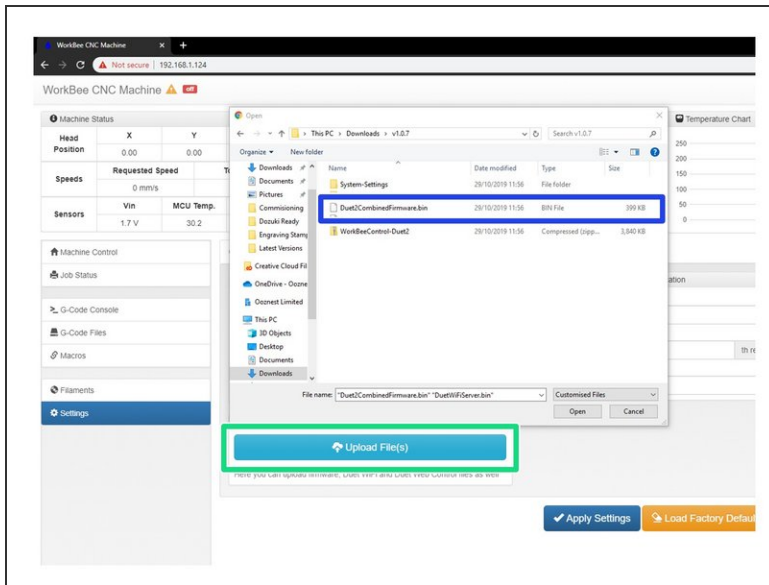
⚠ The WiFi & Ethernet Duets require a different setup format depending on how you are connecting to it, please follow the appropriate Step for your Workbee.

❗ For Ethernet Connected directly to a computer.

- Click Upload under the Settings - General Tab in the Duet Web Control.
- Open the latest version of the Firmware, navigate to System Settings.
- Choose the Machine Drive and Size folder. Once the folder is open right click on config.g and click edit.
- In Notepad add a semicolon in front of M552 S1 and remove the semicolon from the front of M552 S1 P192.168.2.14, change IP Address to suit based on the previous completed guide [2. Connecting your Duet to a Network - Ethernet](#) Save and close this file.
- Select all files inside that folder and click open to upload them to the Duet.

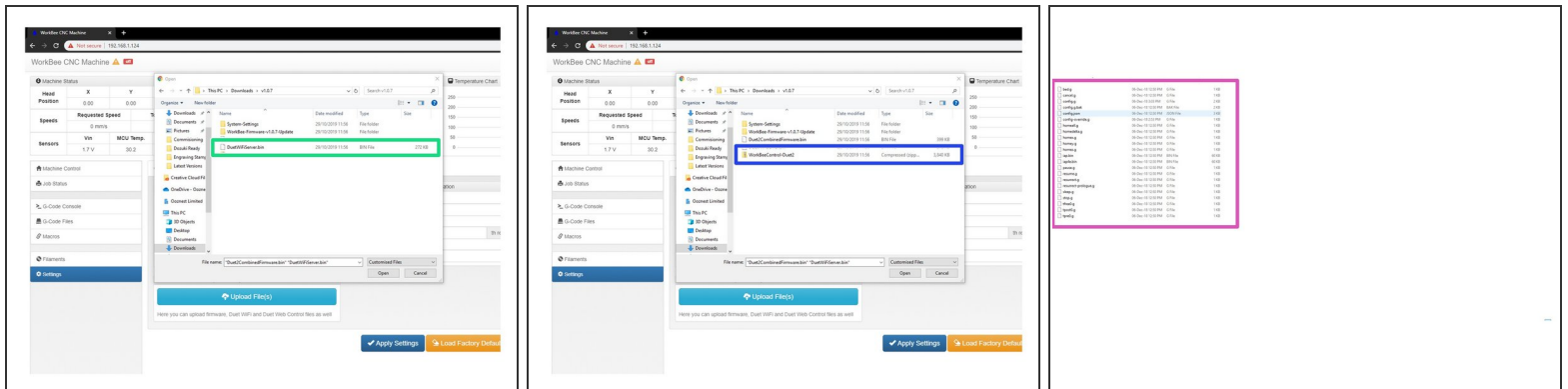
⚠ The controller should automatically reboot after the upload is complete. If not please press the emergency stop button to force restart the controller.

Step 5 — Update Firmware



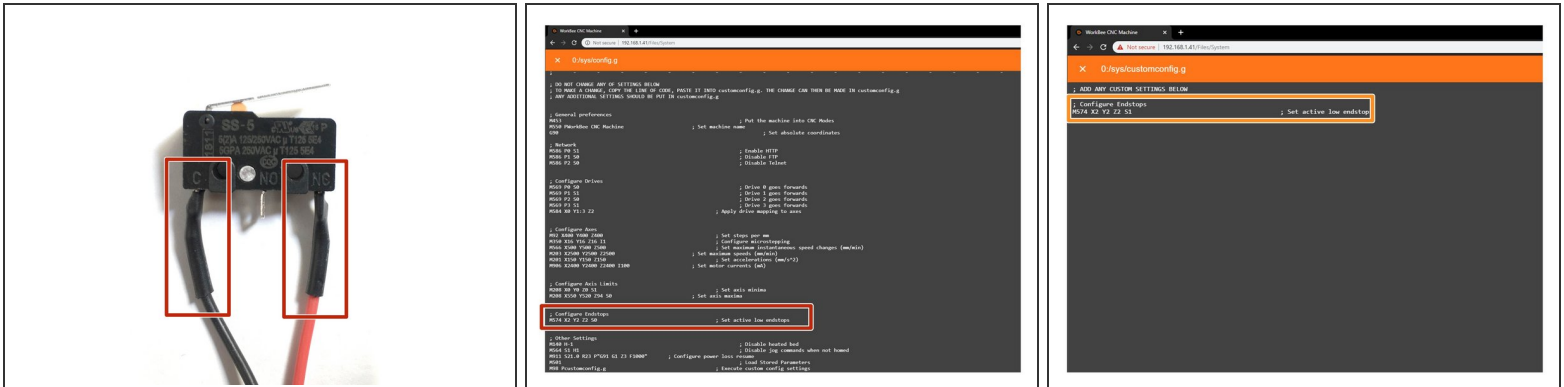
- In WorkBee Web Control go to Settings > General
- Press Upload File
- Navigate to the unzipped firmware folder and select "Duet2CombinedFirmware.bin"
- Wait for the file to upload, and press "Yes" on the update prompt.
- ⚠ Wait for the update to complete.
 - ⚠ The controller should automatically reboot after the update is complete. If not please press the emergency stop button to force restart the controller.

Step 6 — Repeat



- Repeat Step 5 but this time for DuetWifiServer.bin (If applicable)
 - ⚠ Do not do this step if you have the ethernet version.
 - ⚠ The controller should reboot automatically after the update is complete. If not please press the emergency stop button to force restart the controller.
- Repeat the above, but this time for WorkBeeControl-Duet2.zip this will now update your WorkBee CNC Machine to have the latest WorkBee Control Interface.

Step 7 — Configure Limit Switches



⚠ Please check if your limit switches are wired the same as in the image. One wire going to the 'C' terminal and one wire going to the 'NC' terminal. If they are continue with this step. If they are not the same, then this step can be skipped.

❗ If your limit switches do not match the image do not be concerned as everything will still operate correctly.

- Under File Management open System - Config.g and Copy the Configure Endstops information.
- Return back to System and open Customconfig.g and paste in the Lines as follows ; Configure Endstops M574 X2 Y2 Z2 S1 ; Set active low endstops changing the S0 to S1 to reflect the NC Terminals.
- ❗ If you have different configurations for each switch please email sales@ooznest.co.uk for further advice.
- Once complete, Press 'Save' and reboot by pressing the Emergency Stop Button.

Thanks for following the guide. Please move onto the next guide to learn how to use your WorkBee CNC Machine. Any issues, please contact us!