



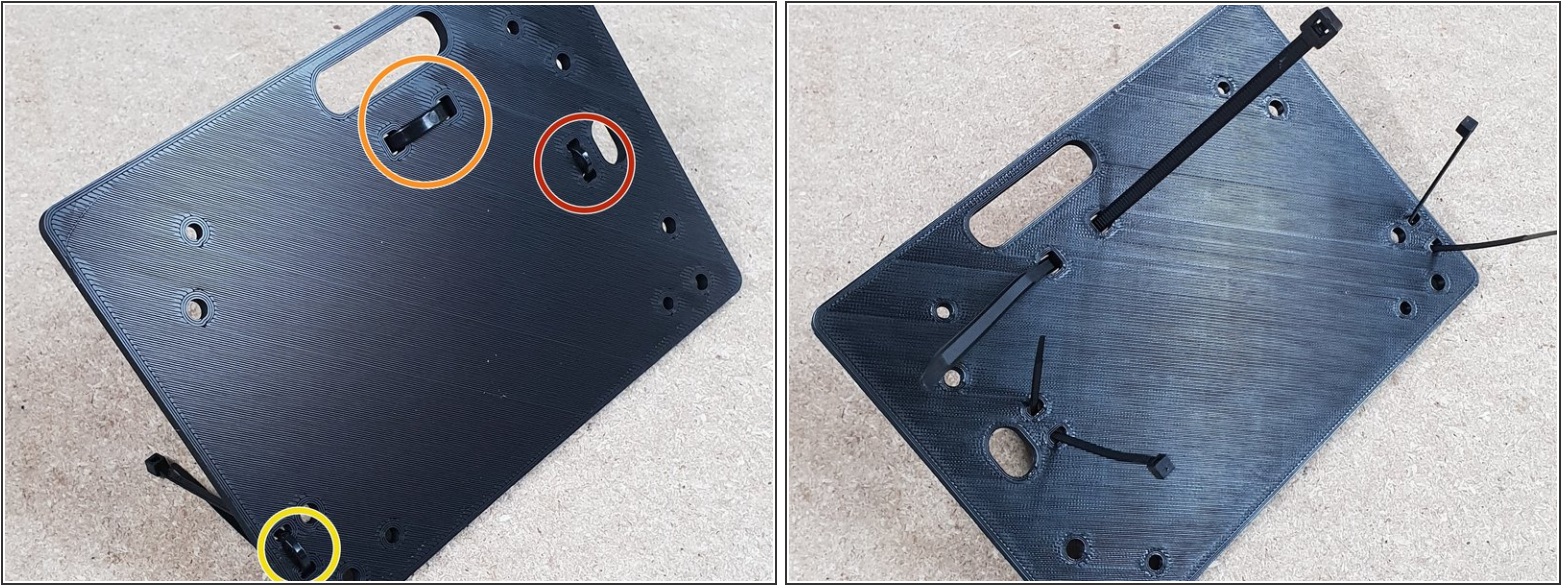
Assemble Duet Controller

Assembling the Duet 3D Controller with Fans and Mounts.

Written By: Ryan Christy



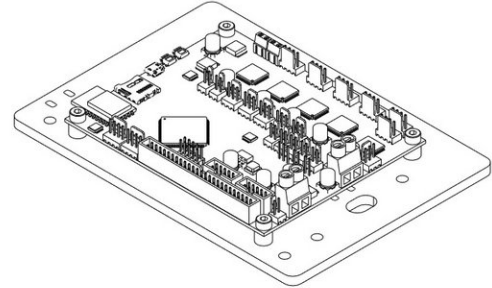
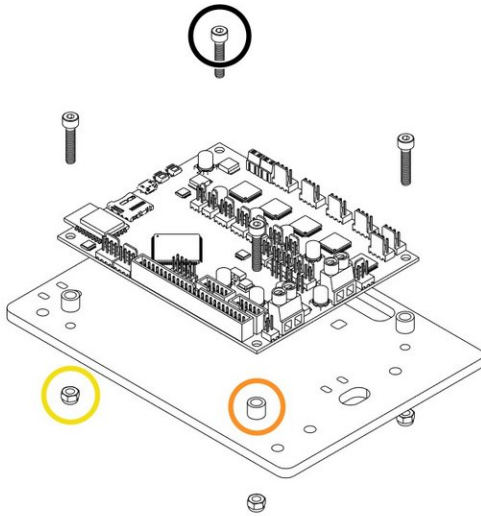
Step 1 — Fixing the Cable Ties into position



⚠ Making sure the board is orientated in the correct way as displayed in the image.

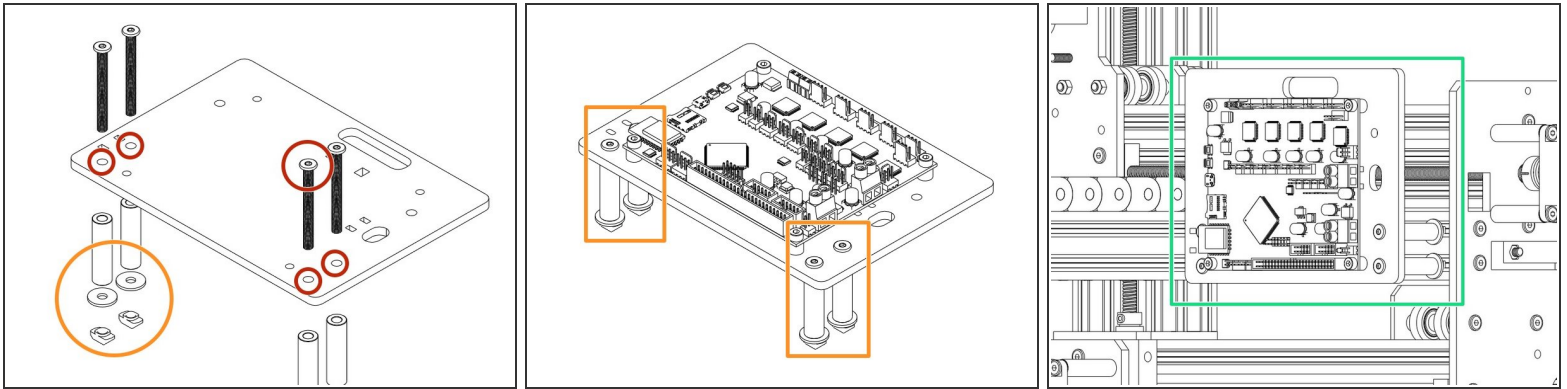
- The Large Cable Tie highlighted in Orange is for the 4 Stepper Motor Cables and the Limit Switches.
- The Small Cable Tie highlighted in Red is for the power cable.
- The Small Cable Tie highlighted in Yellow is only needed if you have the Ethernet Version, and is to secure the Ethernet Cable.

Step 2 — Mounting the Controller to the Duet Mount



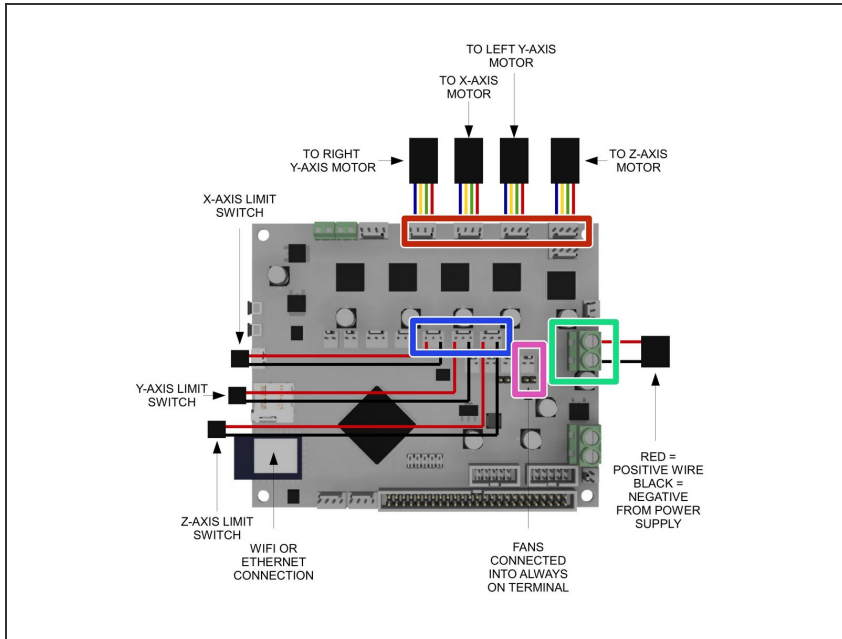
- Insert a M4 Cap Head Bolt 20mm through each hole on all 4 corners on the Duet 3D Controller.
 - Onto each bolt slide a 1/4" Nylon Spacer.
 - Now it is time to join the Duet to the Duet Mount. Insert the bolts into the holes on the Duet Mount and secure using 4 x M4 Nyloc Nuts.

Step 3 — Mounting the Controller to the Machine



- Insert 4 x M5 Low Profile Bolts through the holes indicated in the image.
- Place a 1-1/2" Aluminium Spacers over each bolt followed by a Slot Washer and finally a M5 Drop in Tee Nut.
- Once assembled line up with the 2040 Extrusion on the right hand side of the machine and fix into place tightening the M5 Bolts until the Tee Nuts engage

Step 4 — Wiring the Duet 3D Controller

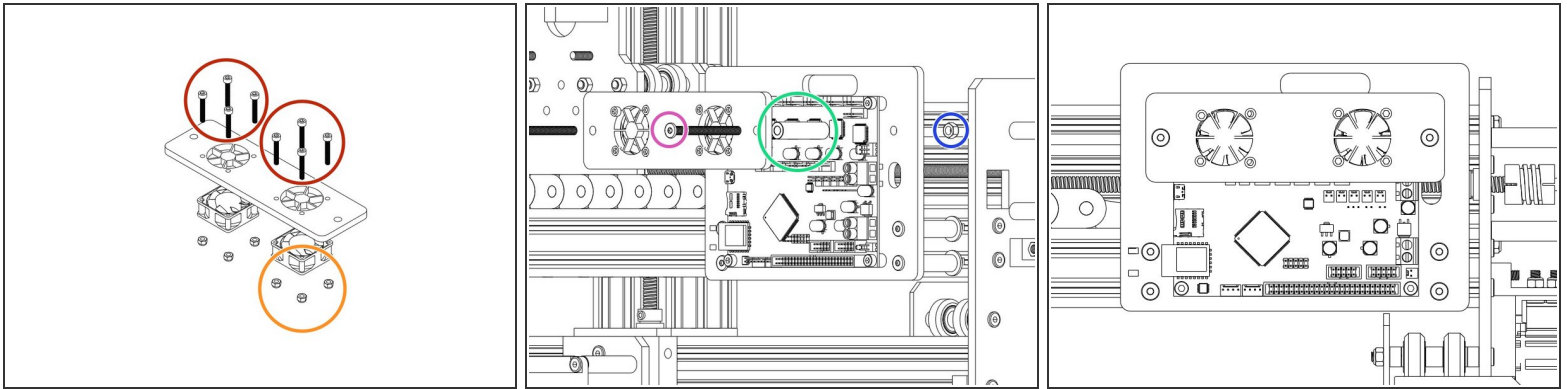


i The connectors for the Duet controller are keyed, so there is only one way which they can plug in.

! For 750x1000mm Screw Drive Machines and 1000x1000mm Screw Drive machines, the Right Y-Axis motor wire may have different wire colors to the other motor wires. This is normal, connect the wires as normal. The connectors are keyed, so they will only plug in one way.

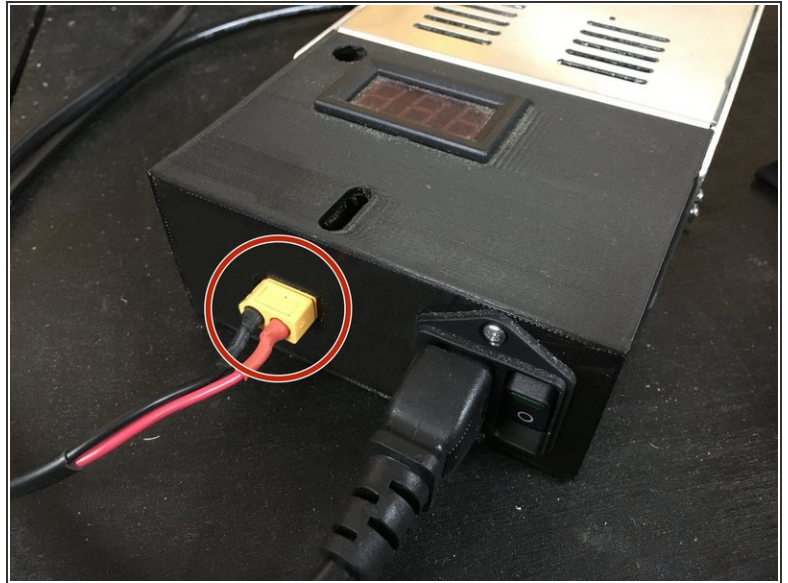
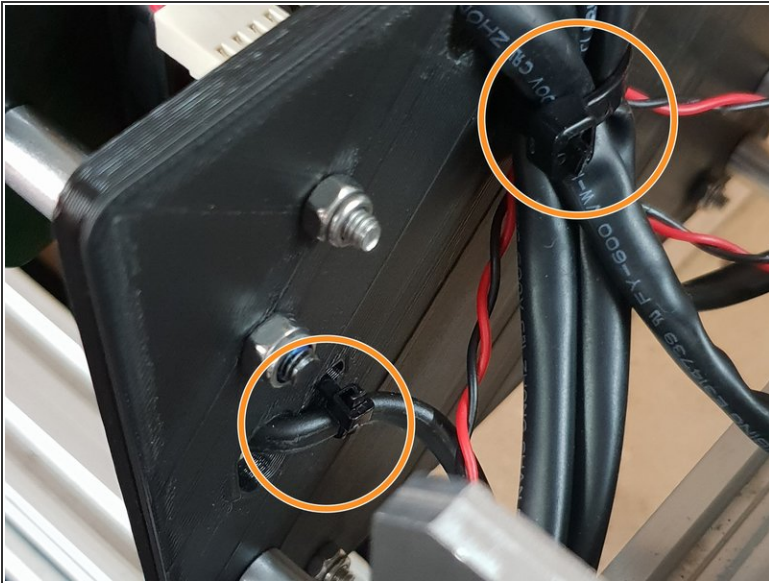
- Connect the stepper motor terminals to the points show along the top.
- Using a screwdriver connect the positive and negative power supply wires and screw into place securely.
- Connect the limit switches to the terminals shown.
- The fans have to be connected to the 'Always On' Fan terminal on the Duet before you can mount the fans in place.

Step 5 — Mounting the Fans to the Board



- Use 8 x M3 Cap Head 20mms to fix the fans highlighted in Yellow onto the Mount with the Fan label facing outward.
 - Secure the M3 Cap Head 20mm's using 8 x M3 Nyloc Nuts.
 - Thread 2 x M5 55mm Low Profile Bolts through the fan mount.
 - Slide the Aluminium Spacers highlighted in Green over the bolts.
 - Now attach to the Main Board mount using 2 x M5 Nyloc Nuts.
- ⚠ Remember to connect the fans to 'Always On' Fan connection of your Duet Controller before tightening the M5 Nyloc Nuts.**

Step 6 — Tidying your Wires



- Using the already inserted cable ties fix the wires into place securely to prevent any unnecessary movement and to keep the machine looking neat!
- ❗ If you have the Ethernet version also secure that.
- Plug the PSU-Output-Power-Cable into the XT60-Male Output on the assembled 24V-360W-Power-Supply.

Thanks for following the guide. Any issues, please contact us!