



1. Connecting your Duet via USB - Windows

This Guide will provide the steps in getting your Duet Connected via USB using a Windows Computer.

Written By: Ryan Christy



INTRODUCTION

Please read before proceeding to avoid damaging the controller and voiding your warranty

Do not have the USB cable connected at the same time as the Mains Power.

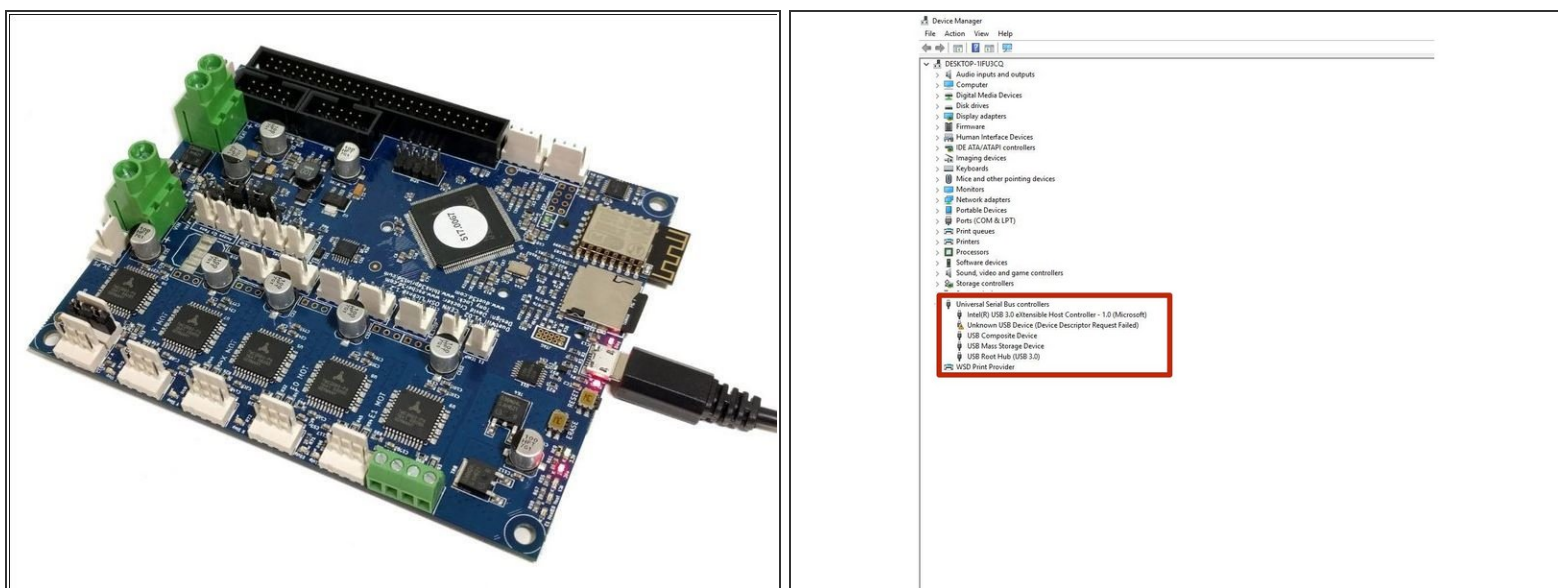
Do not connect the WorkBee to a computer via USB when you don't need to. The Duet has either an Ethernet or WiFi connection, so USB is generally used only when debugging and initially commissioning the controller. All CNC Operations including uploading G-Code files can be done via the web interface.

Do not connect the Duet via USB to a laptop running off mains power.

Other devices powered from the mains may create ground transients. These will flow through the USB cable and may cause the Duet to reset or perform abnormally.

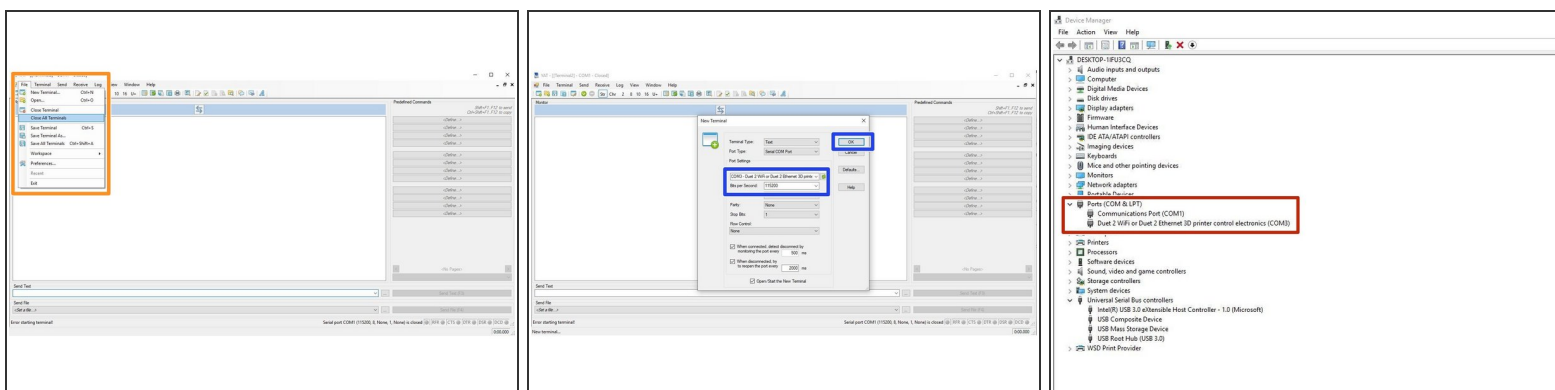
At no point should you press the reset button on your Controller as this can potentially erase the firmware and require your controller to be sent back for testing.

Step 1 — Connect to your Duet Via USB



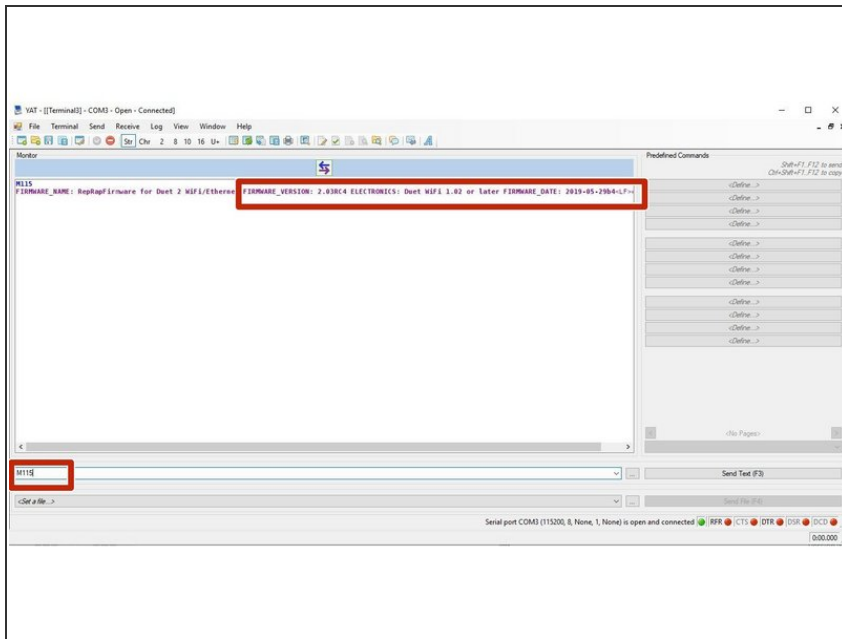
- Download the USB drivers for Duet [here](#) and extract the files to a suitable location.
- Connect the Duet to your PC with the USB cable provided. Do not connect other power supplies at this stage.
- To install drivers, open Device Manager by pressing Windows Key + R and type devmgmt.msc, or launch from the Start menu by typing "Device Manager".
- Look for any devices with a yellow triangle which would indicate that the driver is not installed. If no devices have this indicator, then the driver was successfully installed.
- If a USB device does show the yellow triangle, right click on the device. Click Install Driver and browse to the location of the driver that was downloaded at the beginning of this step. Continue setup by clicking "Next" until the device driver has been installed.

Step 2 — Connect YAT to your Duet



- Download and Install YAT [here](#).
- Open YAT and go to - File -> Close all terminals.
 - Go to File -> Open Terminal
 - Configure the correct COM port, changing the Bits per Second to 115200.
 - Once configured press OK to connect to your Duet.
- If unsure of the COM port number, press Windows Key + R on your keyboard and type devmgmt.msc
 - Your Duet will be listed under Ports (COM & LPT) as USB Serial Device (COM#) or similar. Use COM# as the com port in YAT.

Step 3 — Check your Connected



- After the COM port has been configured, send command "M115" to the Duet board.
- The Duet will return the firmware version being used confirming the connection to the Duet.

Thanks for following the guide. Any issues, please contact us!