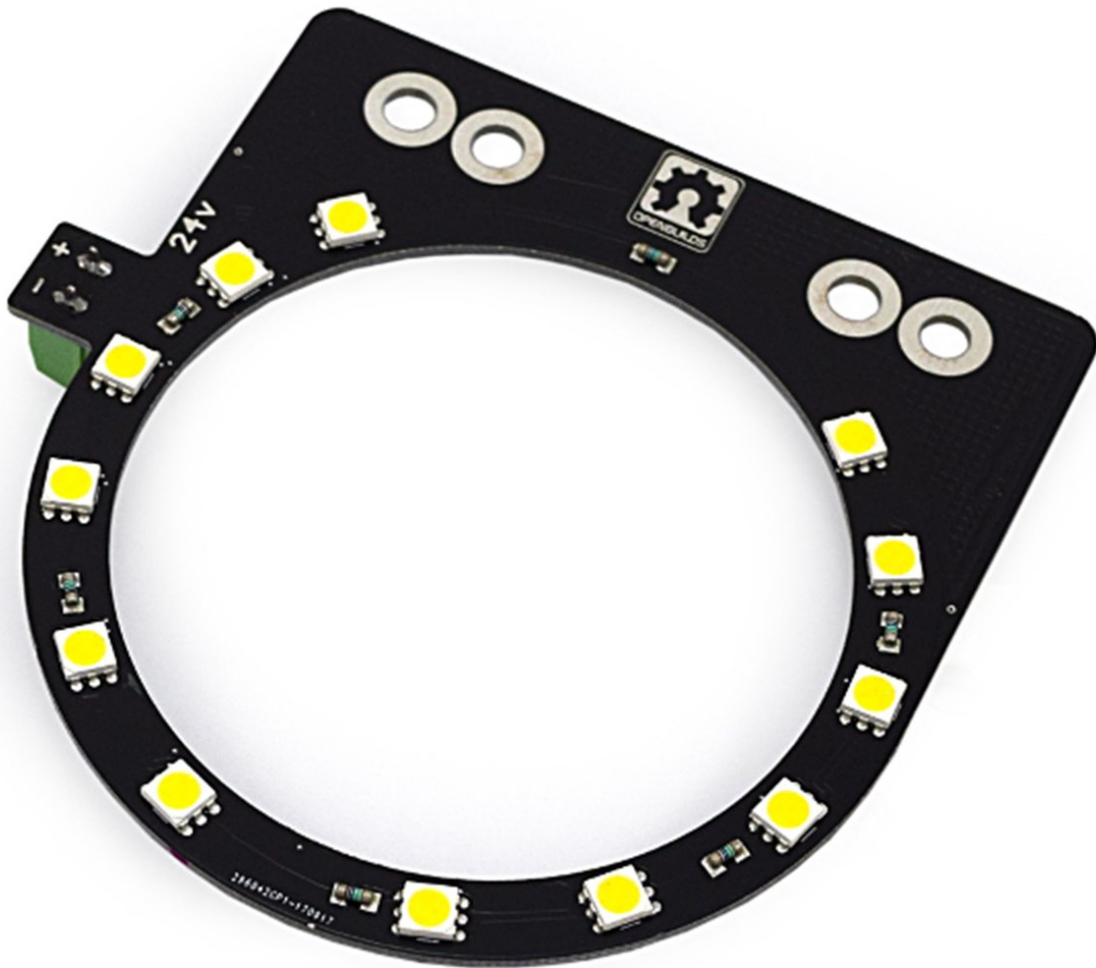


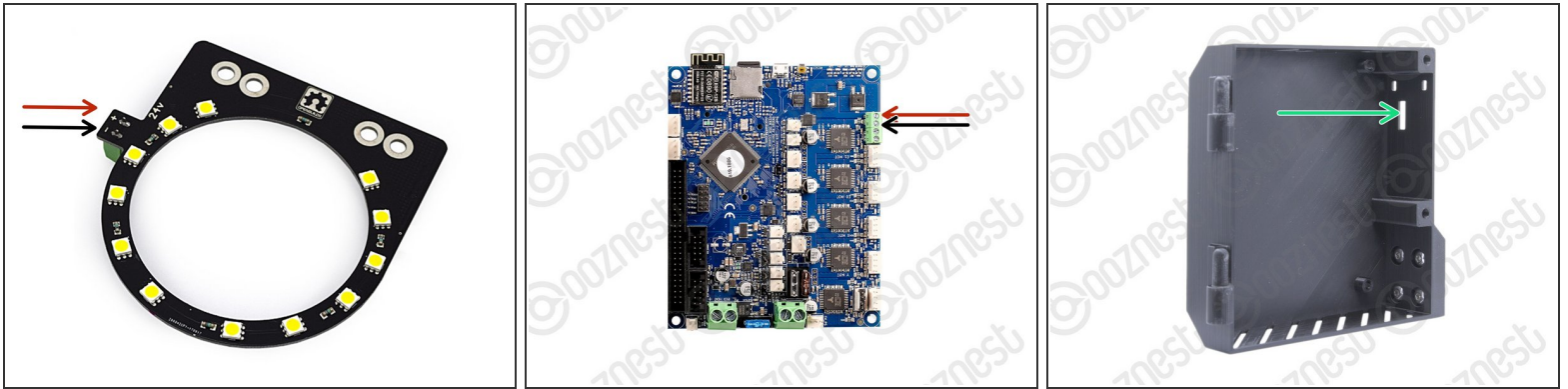


How To Connect LED Light Ring

Written By: Ryan Christy

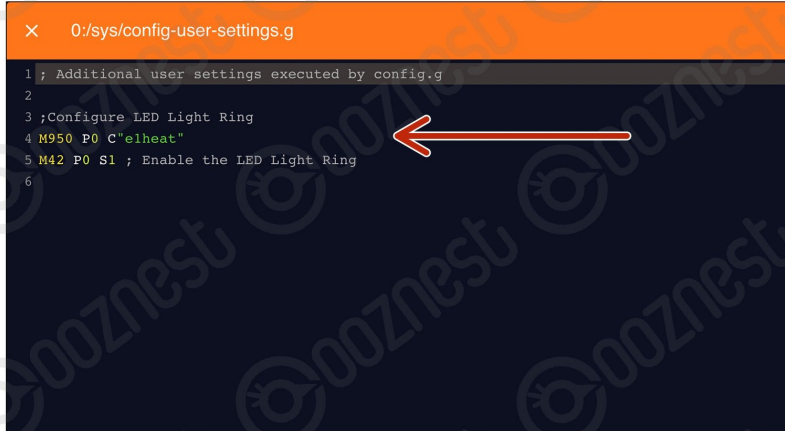


Step 1 — Mounting & Wiring



- The LED Light Ring mounts onto the two back threaded holes on the underside of the Router-Clamp.
- ① If you have the Mafell, you will need to mount it over the top of the Dust-Shoe-Adaptor.
- ① Use two spare M5-Button-Head-Bolt-8mm bolts to secure it to the back two threaded holes.
- ① You will need to forgo the two front mounting bolts.
- ① We sell [Silicone Wire](#) to connect it. Make sure you buy enough to go through the Drag-Chain-X.
- Wire the LED Light Ring into the Extruder 1 Heater outputs on the controller.
- There is a slot in the Controller-Case-Body directly opposite for the wires.

Step 2 — Programming



```
O:/sys/config-user-settings.g
1 ; Additional user settings executed by config.g
2
3 ;Configure LED Light Ring
4 M950 P0 C"e1heat"
5 M42 P0 S1 ; Enable the LED Light Ring
6
```

- Under File Management > System click on 'config-user-settings.g'. Then add the following lines
 - ;Configure LED Light Ring
 - M950 P0 C"e1heat"
 - M42 P0 S1 ; Enable the LED Light Ring
 - ⓘ This will turn the LED Light Ring on when the machine is turned on.
- ⚠ Press the software emergency stop in the top right corner to restart the controller.
- ⓘ Use M42 P0 S0 to turn the LED Light Ring off.
- ⓘ The S value can be between 0 - 1. It is a sliding scale between off and full brightness.

Thanks for following the guide. Any issues, please contact us!