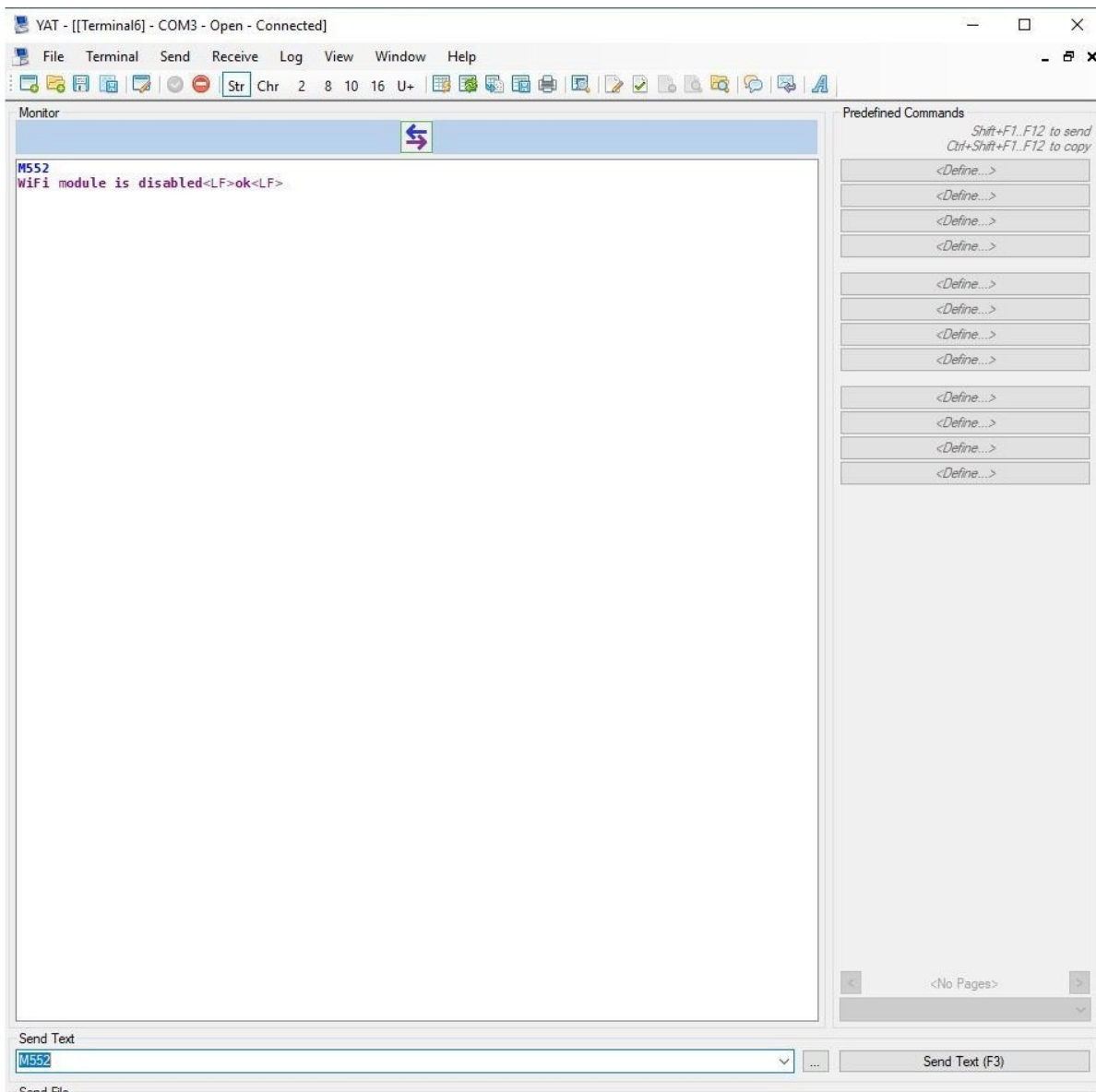




2. Connecting your Duet to a Network - Wifi

This Guide will provide the steps in Connecting your Duet Controller to your WiFi Network.

Written By: Ryan Christy



INTRODUCTION

Please read before proceeding to avoid damaging the controller and voiding your warranty

Do not have the USB cable connected at the same time as the Mains Power.

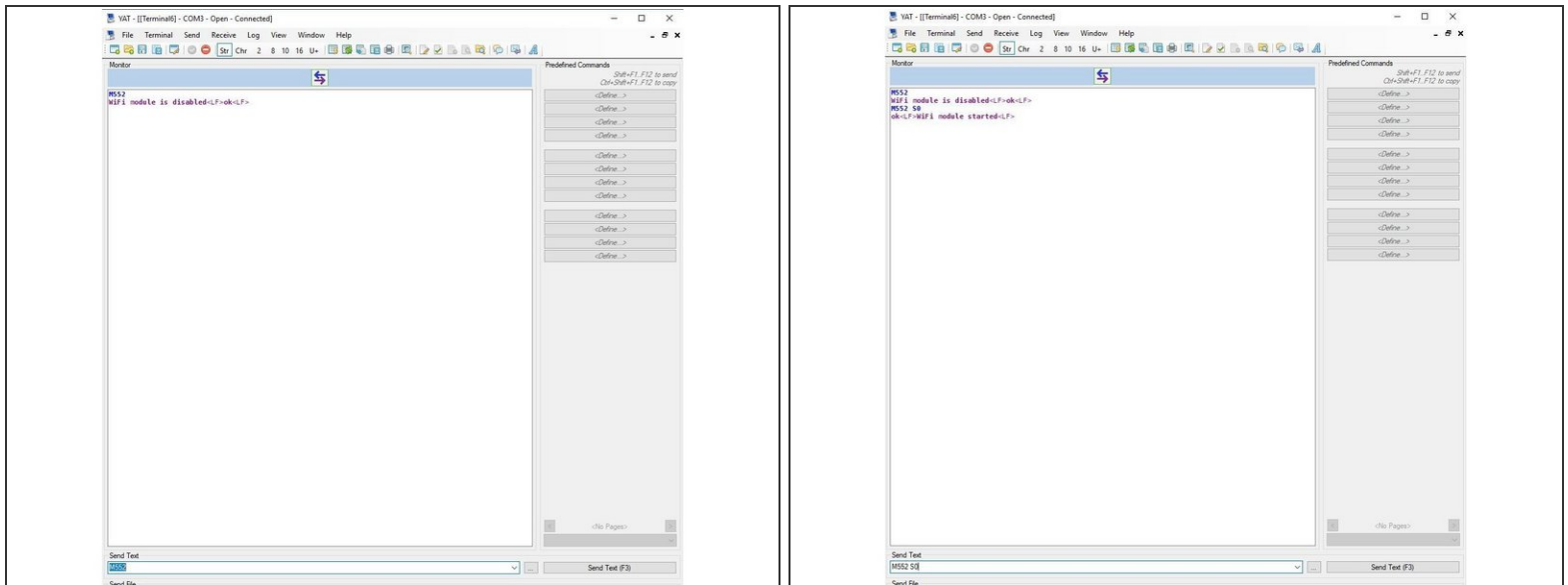
Do not connect the WorkBee to a computer via USB when you don't need to. The Duet has either an Ethernet or WiFi connection, so USB is generally used only when debugging and initially commissioning the controller. All CNC Operations including uploading G-Code files can be done via the web interface.

Do not connect the Duet via USB to a laptop running off mains power.

Other devices powered from the mains may create ground transients. These will flow through the USB cable and may cause the Duet to reset or perform abnormally.

At no point should you press the reset button on your Controller as this can potentially erase the firmware and require your controller to be sent back for testing.

Step 1 — Enable Network Module

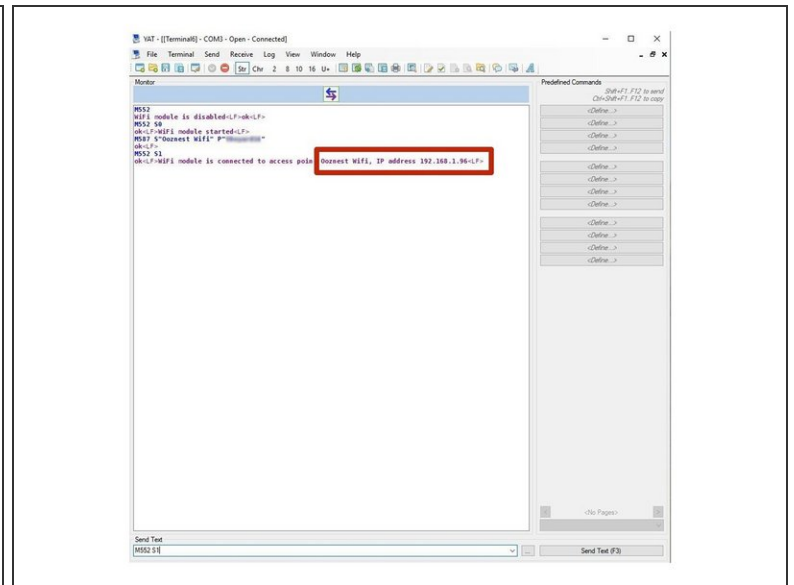
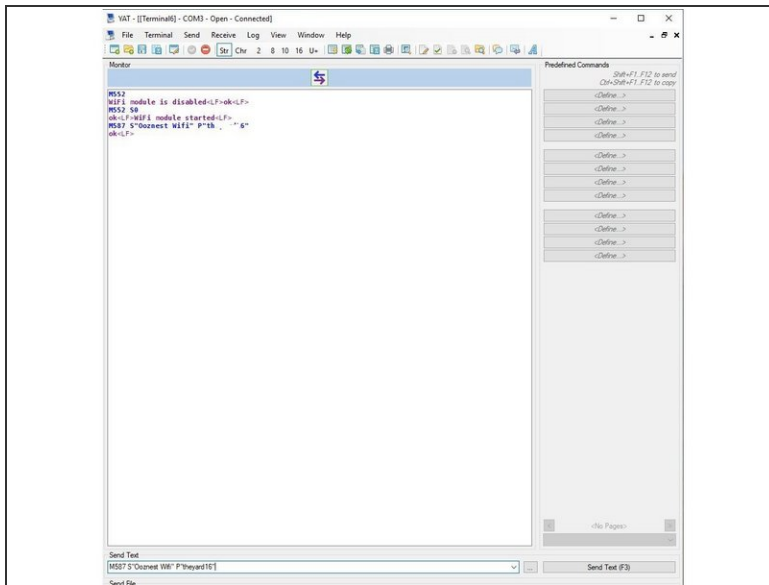


✦ If using Mac OSX use Notepad to enter all the figures and commands as Terminal does not allow you to view the entered information.

- First, check the status of the Wifi Module by sending command "M552" to Duet.
- If Duet returns Wifi or Ethernet module is disabled, put it into idle mode it by sending command "M552 S0". If it returns Wifi or Ethernet module is idle, proceed to the next step.

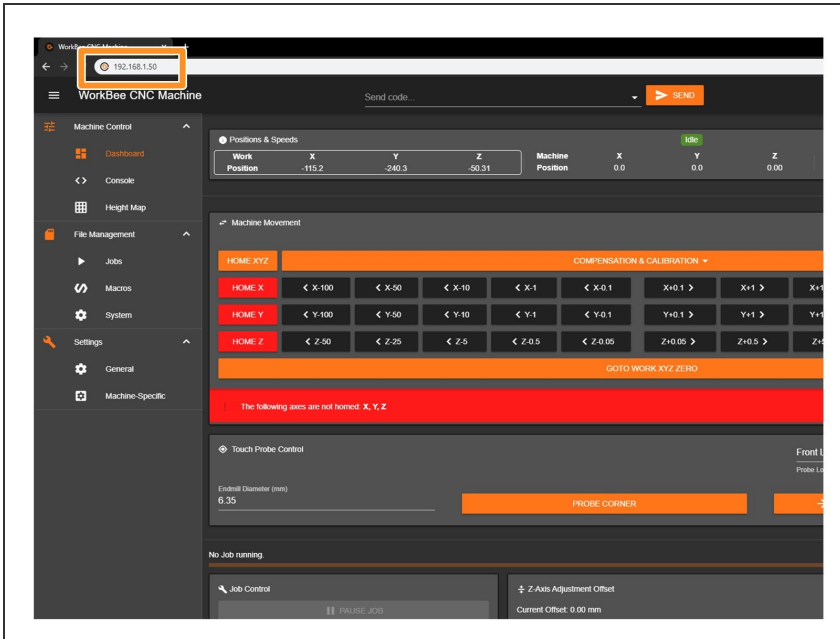
ⓘ Note: The WiFi module only support 2.4Ghz not 5 Ghz Wifi bands.

Step 2 — Duet 2 Wifi only - Set Wifi Network



- Use the command M587 as shown below. Use double quotation marks, but substitute your SSID and WiFi password.
 - M587 S"your-network-name" P"your-password"
- ❗ As a preset we have used the following setup M587 S"Ooznest Wifi" P"password"
- ⚠ **Important:** enter the exact characters in the SSID and password of your network, in the correct case, except that if your SSID contains an apostrophe then enter two apostrophe characters in its place. For example, if your SSID is Pete's network then enter "Pete's network".
- Send command M552 S1 to connect to WiFi. (Make sure to connect 2.4GHz network , 5.0GHz network will not connect with the Duet)
 - After a moment, Duet will confirm the connection and the IP address of the Duet controller.
 - 📌 Take note of this IP Address as it will be needed to access the Web Control in the next step.
- Your Duet Wifi is now connected to your Wifi Network. (The blue light should be on the Wifi module of the controller)

Step 3 — Check Access to Duet Web Interface



- Open your browser and type the IP address assigned to the Duet. We have used 192.168.1.50 as an example.
- You should now see the main control page for the Duet!
- ① Remember to Bookmark the Website and add it to your favourites for easier future access.

Thanks for following the guide. Any issues, please contact us!