



6. Assemble Duet Controller

Assembling the Duet 3D Controller with Fans and Mounts.

Written By: Robert



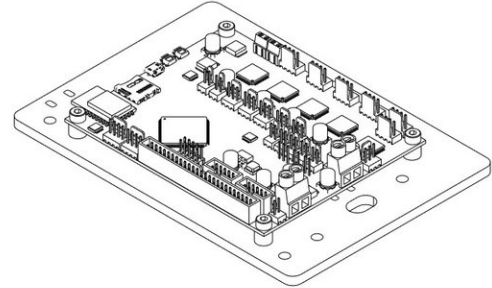
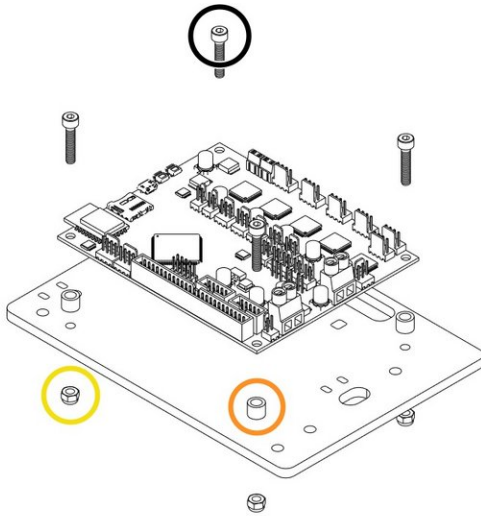
Step 1 — Fixing the Cable Ties into position



⚠ Making sure the board is orientated in the correct way as displayed in the image.

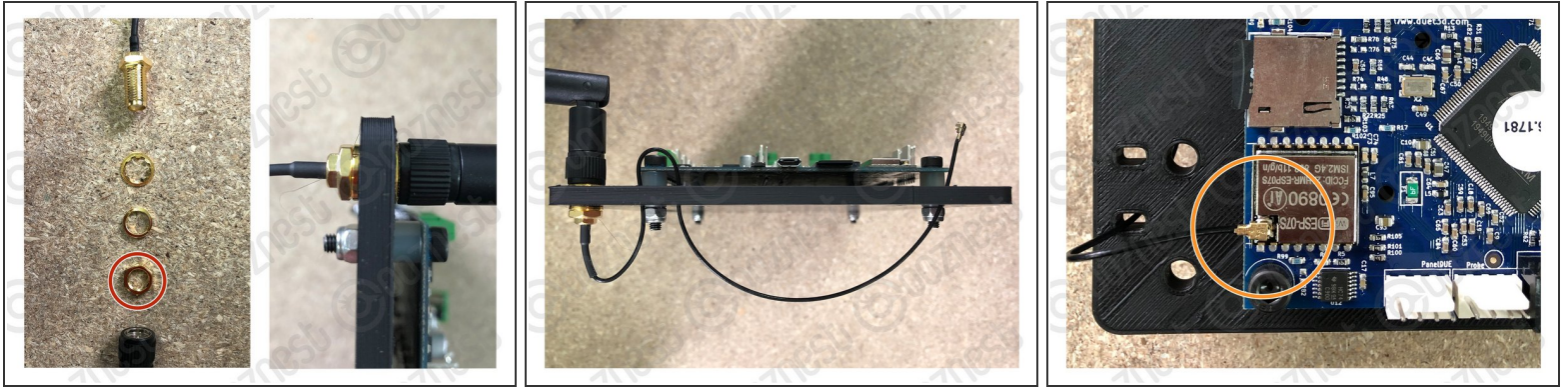
- The Large Cable Tie highlighted in Orange is for the 4 Stepper Motor Cables and the Limit Switches.
- The Small Cable Tie highlighted in Red is for the power cable.
- The Small Cable Tie highlighted in Yellow is only needed if you have the Ethernet Version, and is to secure the Ethernet Cable.

Step 2 — Mounting the Controller to the Duet Mount



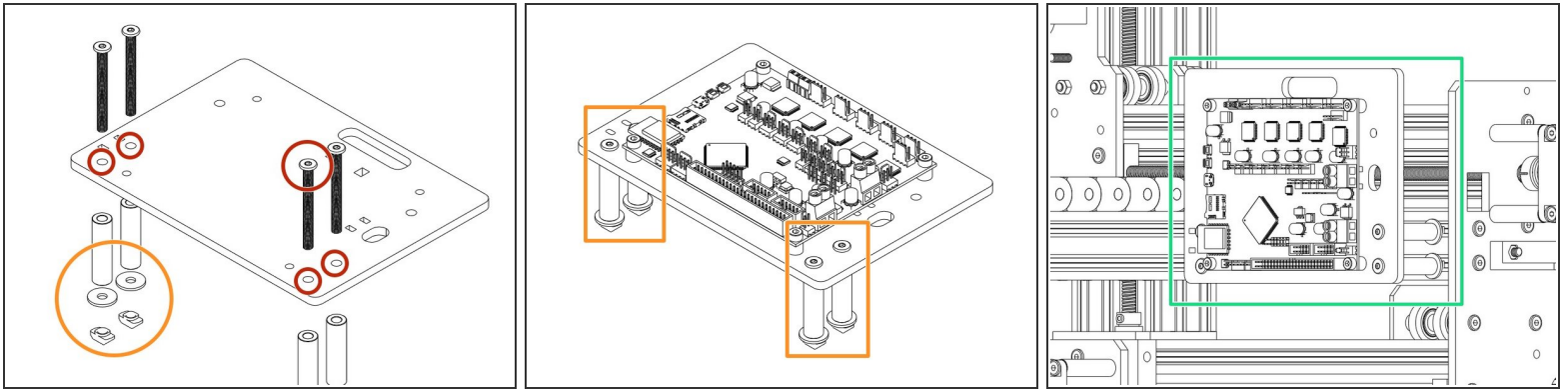
- Insert a M4-Cap-Head-Bolt-20mm through each hole on all 4 corners on the Duet 3D Controller.
 - Onto each bolt slide a 1/4"-Nylon-Spacer.
 - Now it is time to join the Duet to the Duet Mount. Insert the bolts into the holes on the Duet Mount and secure using 4 x M4-Nyloc-Nuts.

Step 3 — Install Antenna



- ❗ If you have received the Duet Wifi External Antenna version please follow this Step, if not proceed to Step 4.
- Unscrew the antenna wire from the antenna arm. There will then be 4 parts, antenna wire, star washer, spring washer, hex nut, antenna arm.
 - Discard the hex nut as it is not needed for the assembly.
 - Insert the Antenna wire from the back of the Duet Mount with the spring washer. Once pushed through add the star washer and screw on the antenna arm.
 - Follow image 2 to route your cable through the holes on the Duet Mount.
 - Push the antenna fitting onto the Wifi module until it clicks into place.

Step 4 — Mounting the Controller to the Machine



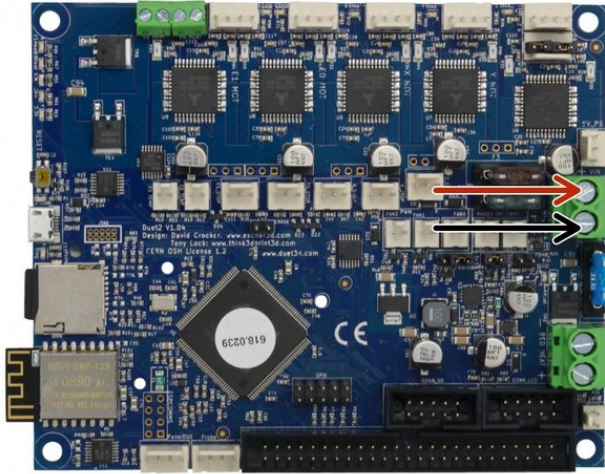
--- WorkBee 2.2.1 ---

- Insert 4 x M5-Low-Profile-50mm bolts through the holes indicated in the image.
- Place a Aluminium-Spacer-40mm Spacers over each bolt followed by a Slot-Washer and finally a M5-Drop-In-Tee-Nut.
- Once assembled line up with the 2040 Extrusion on the right hand side of the machine and fix into place tightening the bolts until the M5-Drop-In-Tee-Nuts engage

--- WorkBee 2.2 ---

- Insert 4 x M5-Low-Profile-50mm bolts through the holes indicated in the image.
- Place a Aluminium-Spacer-1-1/2" Spacers over each bolt followed by a Slot-Washer and finally a M5-Drop-In-Tee-Nut.
- Once assembled line up with the 2040 Extrusion on the right hand side of the machine and fix into place tightening the bolts until the M5-Drop-In-Tee-Nuts engage

Step 5 — Connecting the PSU Input Cable



⚠ The Mains Power should remain off during all wiring of the Duet Controller.

- PSU Cable from Power Supply - Connect Red Positive Wire into the Top Screw Terminal and Black into Bottom Screw Terminal.

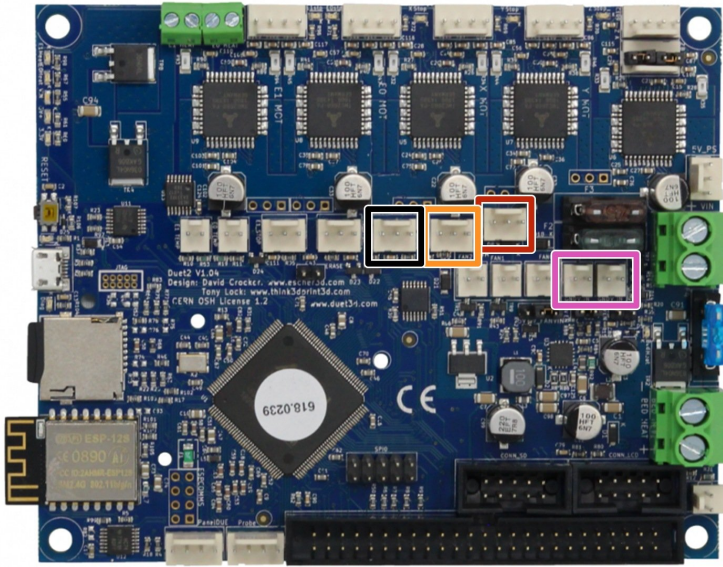
Step 6 — Wire Identifications



❗ If the wires in your kit have white printed tags, please ignore this step. Each wire, at the connector end has a coloured clip with a number. This colour and number identifies this wire. Please see key below.

- (0)(Black) X-Axis Limit Switch
- (1)(Brown) Y-Axis Limit Switch
- (2)(Red) Z-Axis Limit Switch
- (3)(Orange) X-Axis Stepper Motor Wire
- (4)(Yellow) Left Y-Axis Stepper Motor Wire
- (5)(Green) Right Y-Axis Stepper Motor Wire
- (6)(Light Blue) Z-Axis Stepper Motor Wire

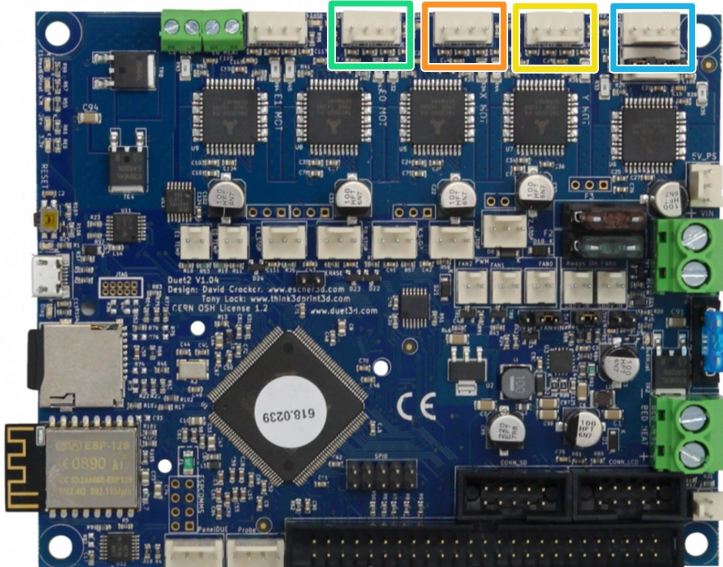
Step 7 — Limit Switches & Fans



i The connectors for the Duet controller are keyed, so there is only one way which they can plug in.

- (0)(Black) X-Axis Limit Switch
- (1)(Brown) Y-Axis Limit Switch
- (2)(Red) Z-Axis Limit Switch
- Fans connected to either of the Always on Fan Terminals.

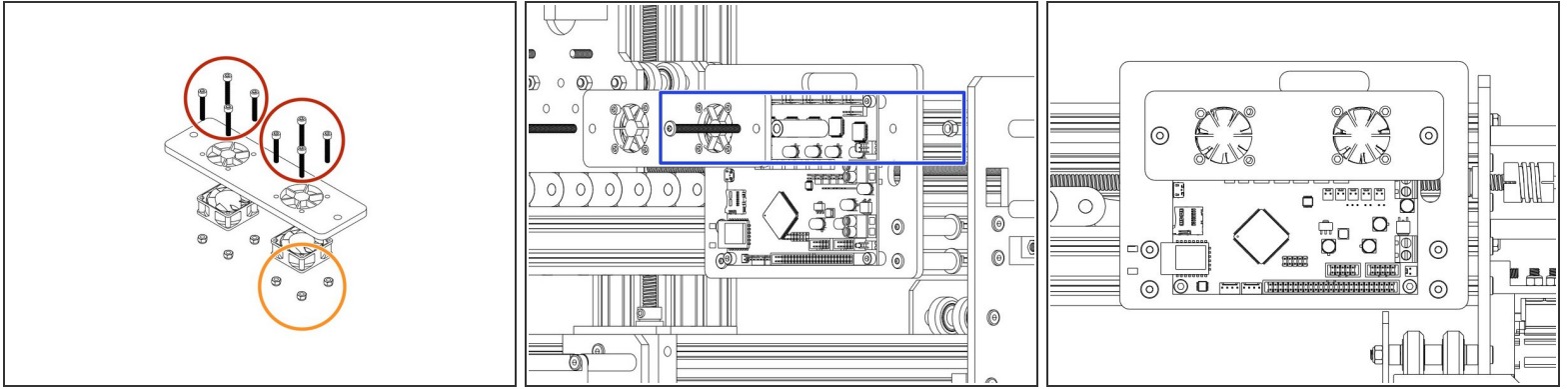
Step 8 — Stepper Motor Connectors



i The connectors for the Duet controller are keyed, so there is only one way which they can plug in.

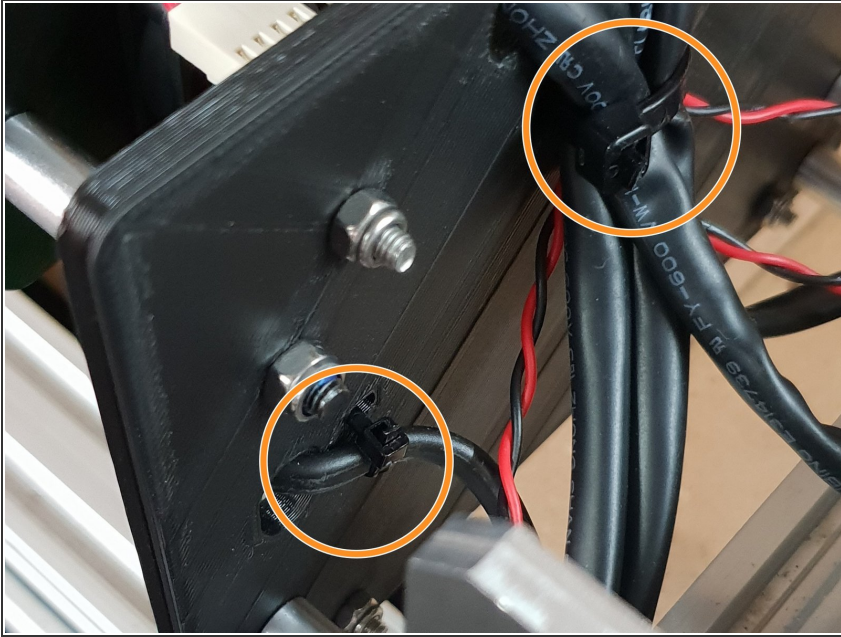
- (3)(Orange) X-Axis Stepper Motor Wire.
- (4)(Yellow) Left Y-Axis Stepper Motor Wire.
- (5)(Green) Right Y-Axis Stepper Motor Wire.
- (6)(Light Blue) Z-Axis Stepper Motor Wire.

Step 9 — Mounting the Fans to the Board



- Use 8 x M3-Cap-Head-Bolt-20mms & 8 x M3-Nyloc-Nuts secure the fans highlighted in Yellow onto the Mount with the Fan label facing outward.
- ① --- WorkBee 2.2.1 ---
 - Thread 2 x M5-Low-Profile-60mm Bolts through the fan mount. Then slide the a Aluminium-Spacer-40mm highlighted in Green over each bolt.
- ① --- WorkBee 2.2 ---
 - Thread 2 x M5-Low-Profile-55mm Bolts through the fan mount. Then slide the a Aluminium-Spacer-1-1/2" highlighted in Green over each bolt.
- Now attach to the Main Board mount using 2 x M5-Nyloc-Nuts.
- ⚠ Connect the fans to 'Always On' Fan connection of your Duet Controller before tightening the M5 Nyloc Nuts.

Step 10 — Tidying your Wires



- Using the already inserted cable ties fix the wires into place securely to prevent any unnecessary movement and to keep the machine looking neat!
- ⓘ If you have the Ethernet version also secure that.

Thanks for following the guide. Any issues, please contact us!