



1. Connecting you're Duet via USB - Windows

This Guide will provide the steps in getting you're Duet Connected via USB using a Windows Computer.

Written By: Ryan Christy



INTRODUCTION

Please read before proceeding to avoid damaging the controller and voiding your warranty

Do not have the USB cable connected at the same time as the Mains Power.

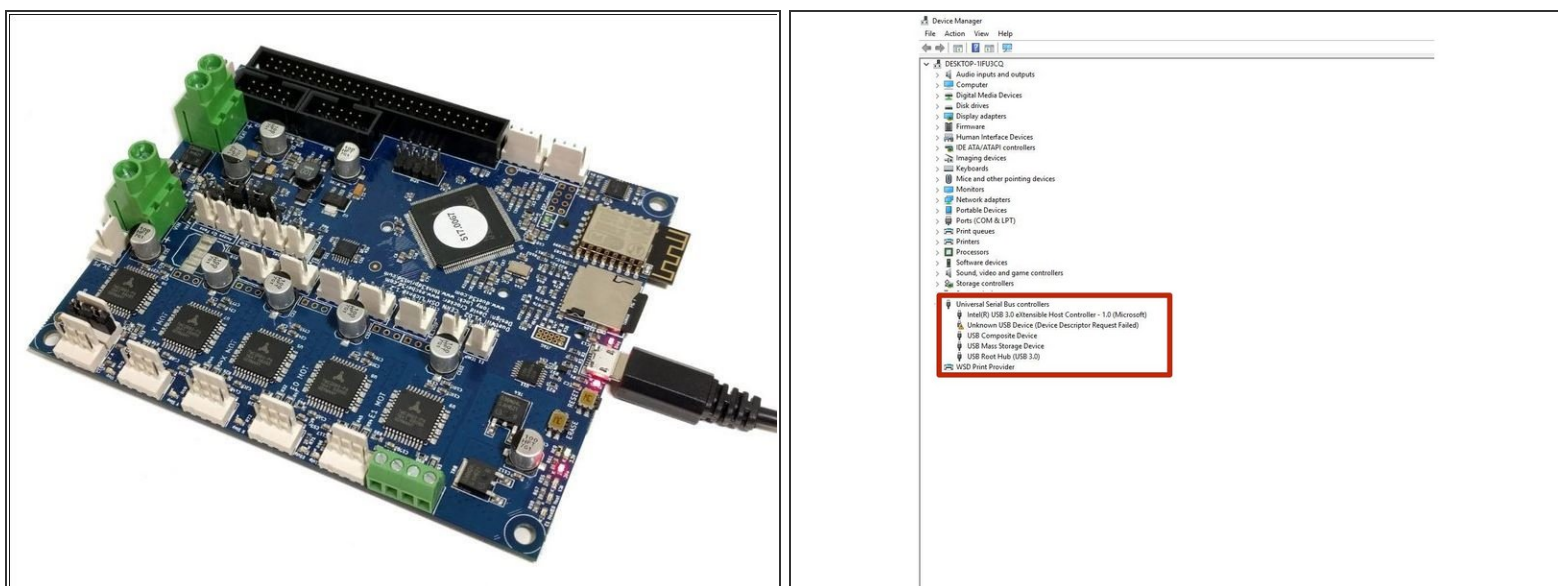
Do not connect the WorkBee to a computer via USB when you don't need to. The Duet has either an Ethernet or WiFi connection, so USB is generally used only when debugging and initially commissioning the controller. All CNC Operations including uploading G-Code files can be done via the web interface.

Do not connect the Duet via USB to a laptop running off mains power.

Other devices powered from the mains may create ground transients. These will flow through the USB cable and may cause the Duet to reset or perform abnormally.

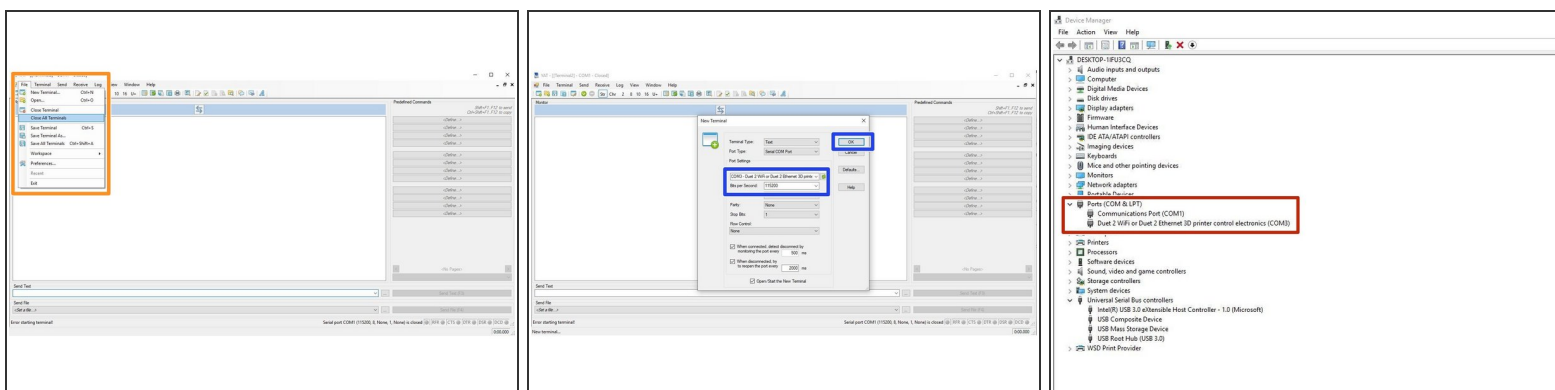
At no point should you press the reset button on your Controller as this can potentially erase the firmware and require your controller to be sent back for testing.

Step 1 — Connect to you're Duet Via USB



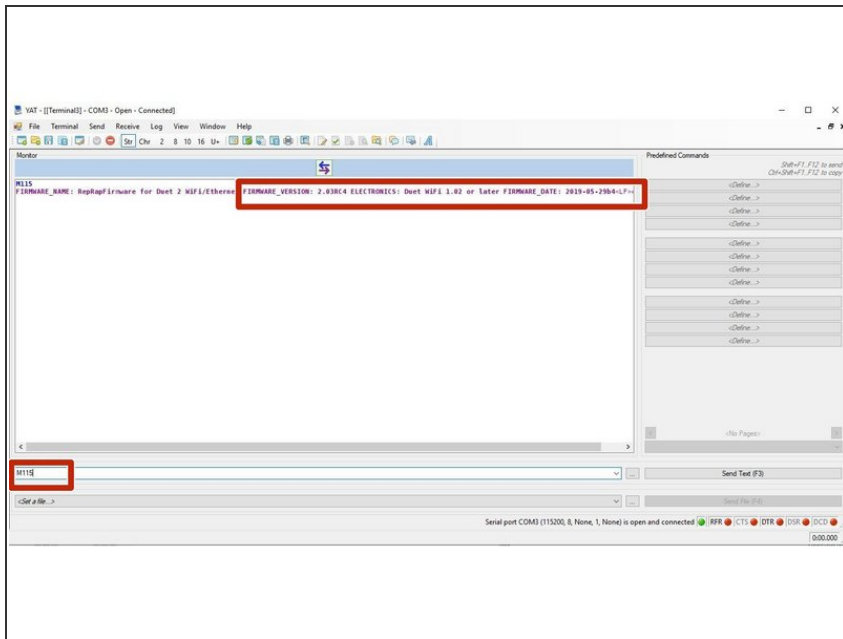
- Download the USB drivers for Duet [here](#) and extract the files to a suitable location.
- Connect the Duet to your PC with the USB cable provided. Do not connect the power supply at this stage.
 - Normally on windows it will automatically install default drivers, and get the device ready for use.
 - Either way open Device Manager by pressing Windows Key + R and type devmgmt.msc, or launch from the Start menu by typing "Device Manager".
 - If the default drivers were installed it will show as a COM port under the 'Ports (COM & LPT)' section.
- ⚠ If windows didn't automatically install the drivers look for any devices with a yellow triangle which would indicate that the driver is not installed. These would normally show in the section highlighted in red in image 2.
- Either way we need to install the Duet Manufacturer Drivers. Right click on the device. Click Update/Install Driver and browse to the folder of the driver that was downloaded at the beginning of this step. Continue setup by clicking "Next" until the device driver has been installed.

Step 2 — Connect YAT to you're Duet



- Download and Install YAT [here](#).
- Open YAT and go to - File -> Close all terminals.
 - Go to File -> Open Terminal
 - Configure the correct COM port, changing the Bits per Second to 115200.
 - Once configured press OK to connect to your Duet.
- If unsure of the COM port number, press Windows Key + R on your keyboard and type devmgmt.msc
 - Your Duet will be listed under Ports (COM & LPT) as USB Serial Device (COM#) or similar. Use COM# as the com port in YAT.

Step 3 — Check you're Connected



- After the COM port has been configured, send command "M115" to the Duet board.
- The Duet will return the firmware version being used confirming the connection to the Duet.
- Leave the USB Cable plugged in for the Network Connection section.

Thanks for following the guide. Any issues, please contact us!