



# 3. Connecting, Updating and Configuring Your WorkBee

This guide goes over connecting to your WorkBee CNC Machine, updating the WorkBee firmware to the latest release, and setting the Machine Dimensions.

Written By: Ryan Lock

Wiki/WorkBee\_Firmware\_Releases

Q

WORKBEE FIRMWARE RELEASES

Latest Version

All Versions

Beta Versions

Post Processors

Fusion360

Vetric

← WorkBee CNC Machine

WorkBee Firmware Releases

Latest Version

Below is the latest firmware version for the WorkBee CNC Machine. If you are installing a new WorkBee please download this version.

If you are updating from version 1.0.6 or older please follow this guide [invalid guide link]

If you are updating from version 1.0.7 or greater please follow this guide [Updating WorkBee Firmware](#)

Version	Full Download	Date
1.0.7	<a href="#">WorkBee-Firmware-v1.0.7</a>	01/11/2019

All Versions

The below table lists all the firmware releases for the WorkBee CNC Machine.

The following items makeup the firmware and control for the WorkBee CNC Machine:

- Duet2CombinedFirmware
- DuetWifiServer (If applicable)
- WorkBeeControl
- System-Settings

When updating from a previous version, you can download from the column named 'Update Download'. This download only includes the files which have been changed from the previous version. These are the only files which need updating. This column can only be used if coming from a previous version in chronological order, for example 1.0.5 > 1.0.6.

Version	Full Download	Update Download	Date	Release Notes	Installation Notes
---------	---------------	-----------------	------	---------------	--------------------

## INTRODUCTION

This guide goes over connecting to your WorkBee CNC Machine, updating the WorkBee firmware to the latest release.

**Please read before proceeding to avoid damaging the controller and voiding your warranty**

Do not have the USB cable connected at the same time as the Mains Power.

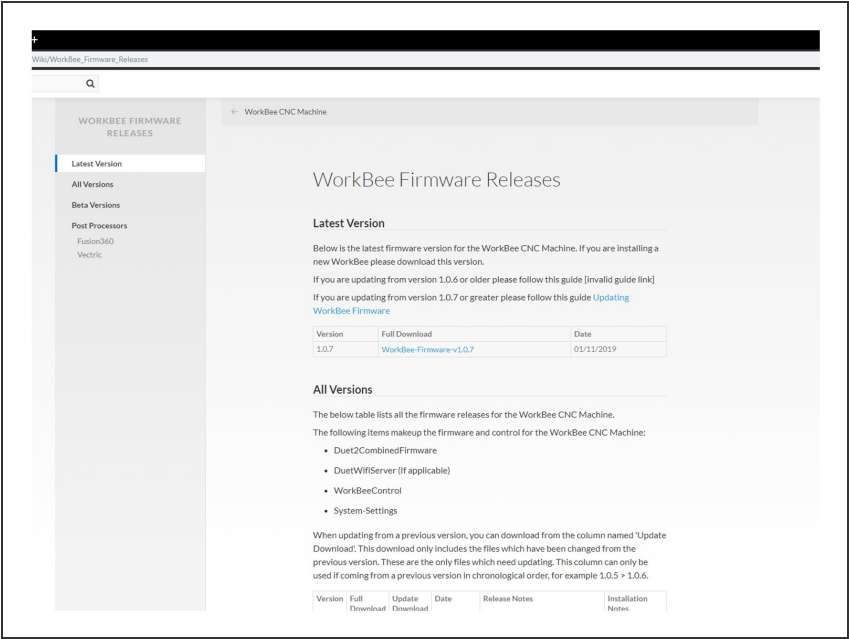
Do not connect the WorkBee to a computer via USB when you don't need to. The Duet has either an Ethernet or WiFi connection, so USB is generally used only when debugging and initially commissioning the controller. All CNC Operations including uploading G-Code files can be done via the web interface.

Do not connect the Duet via USB to a laptop running off mains power.

Other devices powered from the mains may create ground transients. These will flow through the USB cable and may cause the Duet to reset or perform abnormally.

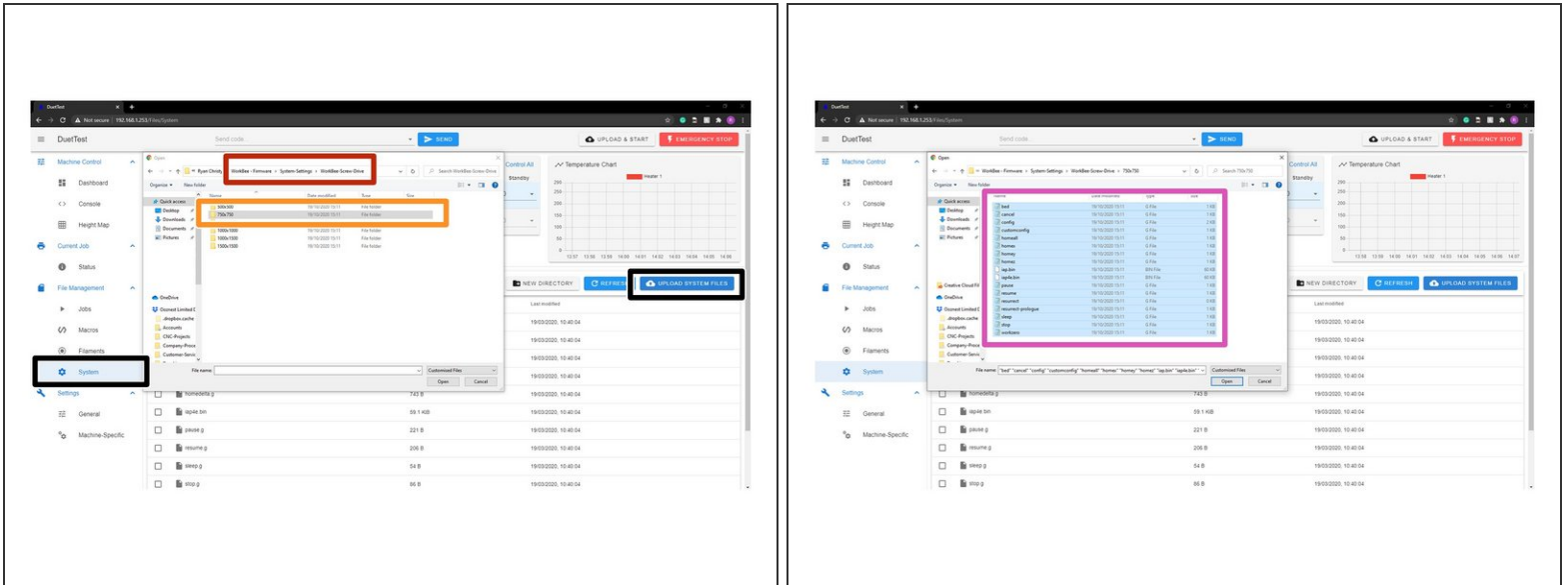
At no point should you press the reset button on your Controller as this can potentially erase the firmware and require your controller to be sent back for testing.

Step 1 — Downloading Firmware



- ⚠ Download the latest firmware from: [WorkBee Firmware Releases](#)
- Unzip the folder to somewhere on your computer.
- ⚠ Do not unzip any folders inside this one.

## Step 2 — Uploading System Settings for Wifi



⚠ The WiFi & Ethernet Duets require a different setup format depending on how you are connecting to it, please follow the appropriate Step for your Workbee.

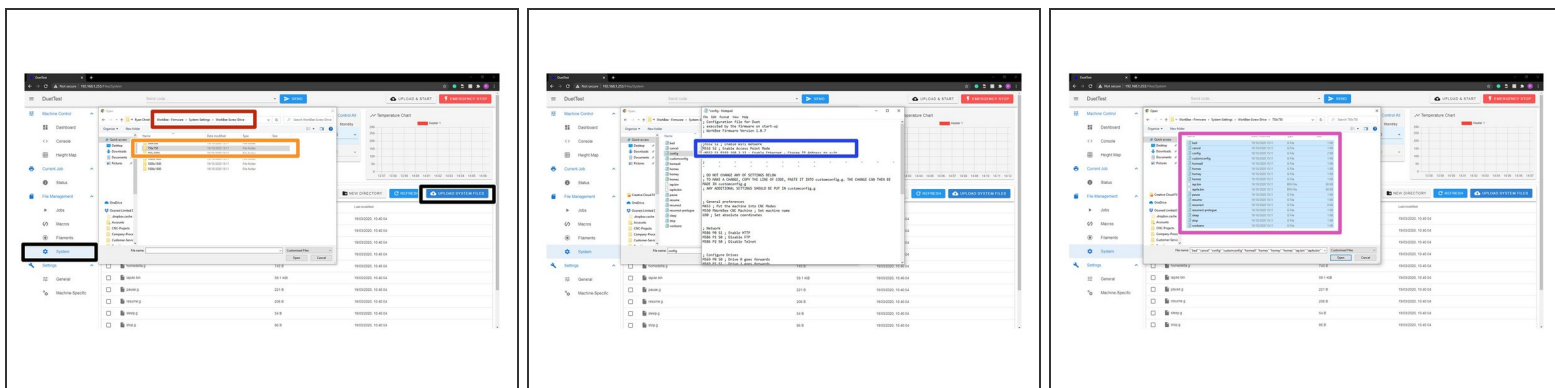
① If your version is different please - Click Upload Files under the Settings - General Tab in the Duet Web Control.

① For Wifi Connected to an External Network.

- Click Upload System Files under the File Management - Settings Tab in the Duet Web Control.
- Open the latest version of the Firmware, navigate to System Settings.
- Choose the Machine Drive and Size folder.
- Select all files inside that folder and click open to upload them to the Duet.

⚠ The controller should automatically reboot after the upload is complete. If not please press the emergency stop button to force restart the controller.

## Step 3 — Uploading System Settings for Access Point WiFi

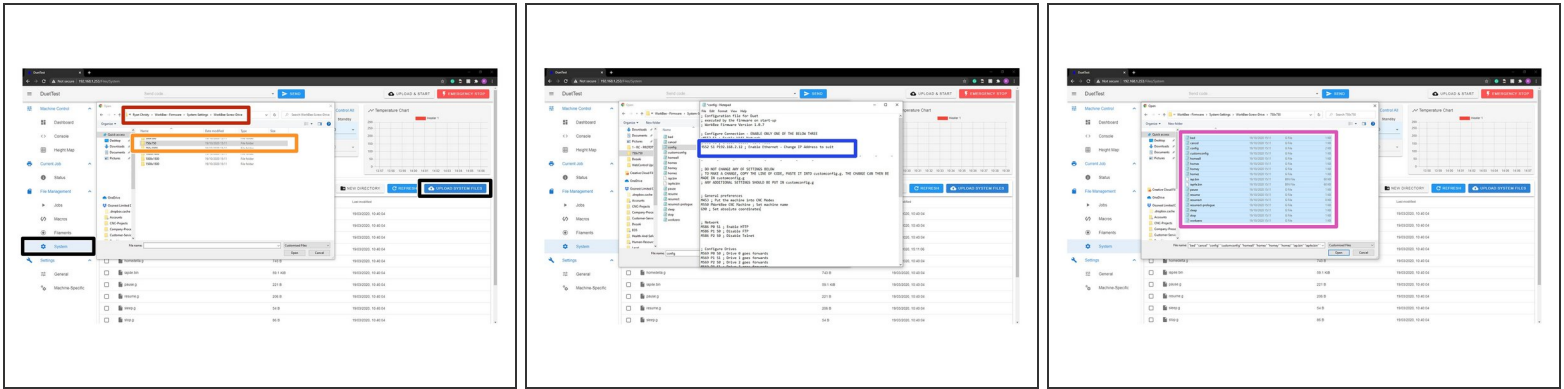


⚠ The WiFi & Ethernet Duets require a different setup format depending on how you are connecting to it, please follow the appropriate Step for your Workbee.

- ❗ For Wifi Connected as an Access Point. If your version is different please - Click Upload Files under the Settings - General Tab in the Duet Web Control.
- Click Upload System Files under the File Management - Settings Tab in the Duet Web Control.
- Open the latest version of the Firmware, navigate to System Settings.
- Choose the Machine Drive and Size folder. Once the folder is open right click on config.g and click edit.
- In Notepad add a semicolon in front of M552 S1 and remove the semicolon from the front of M552 S2, save and close this file.
- Select all files inside that folder and click open to upload them to the Duet.

⚠ The controller should automatically reboot after the upload is complete. If not please press the emergency stop button to force restart the controller.

## Step 4 — Uploading System Settings for Ethernet

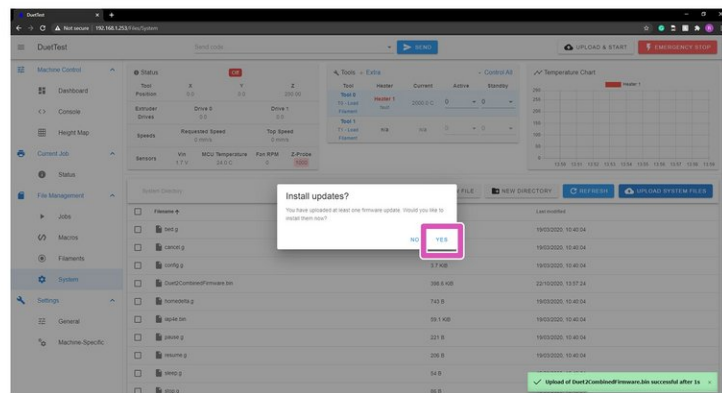
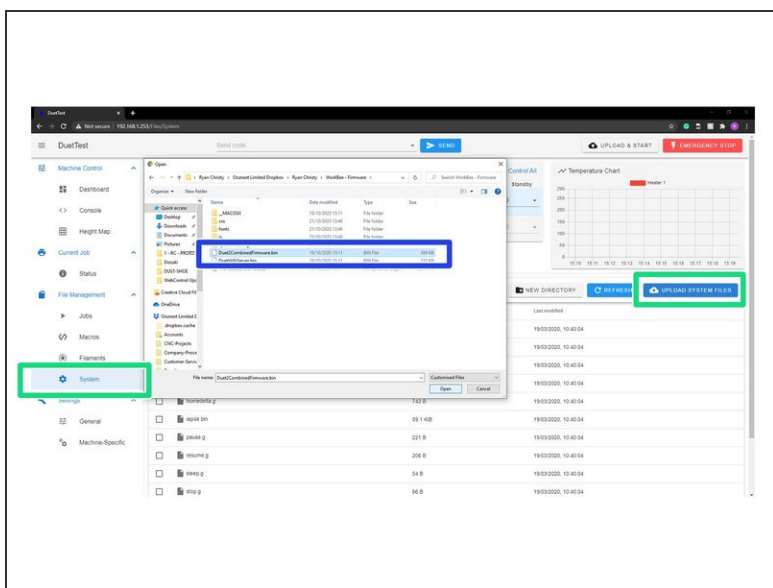


⚠ The WiFi & Ethernet Duets require a different setup format depending on how you are connecting to it, please follow the appropriate Step for your Workbee.

- ❗ For Ethernet Connected directly to a computer. If your version is different please - Click Upload Files under the Settings - General Tab in the Duet Web Control.
- Click Upload System Files under the File Management - Settings Tab in the Duet Web Control.
- Open the latest version of the Firmware, navigate to System Settings.
- Choose the Machine Drive and Size folder. Once the folder is open right click on config.g and click edit.
- In Notepad add a semicolon in front of M552 S1 and remove the semicolon from the front of M552 S1 P192.168.2.12, change the IP Address to suit based on the previous completed guide [2. Connecting your Duet to a Network - Ethernet](#) Save and close this file.
- Select all files inside that folder and click open to upload them to the Duet.

⚠ The controller should automatically reboot after the upload is complete. If not please press the emergency stop button to force restart the controller.

## Step 5 — Update Firmware



❗ If your version is different please - Click Upload Files under the Settings - General Tab in the Duet Web Control.

- In WorkBee Web Control go to Settings > General

- Press Upload System Files

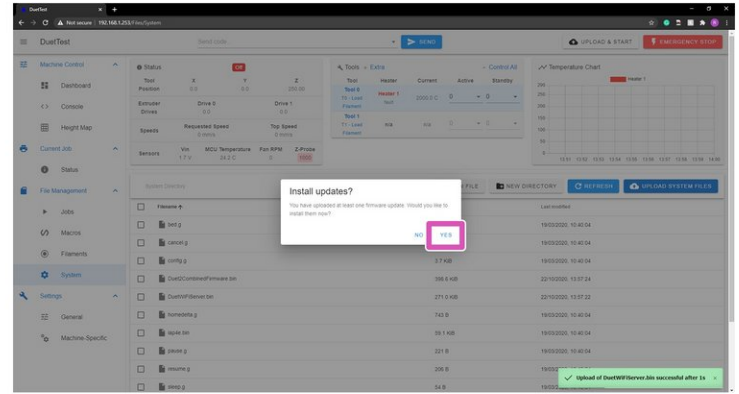
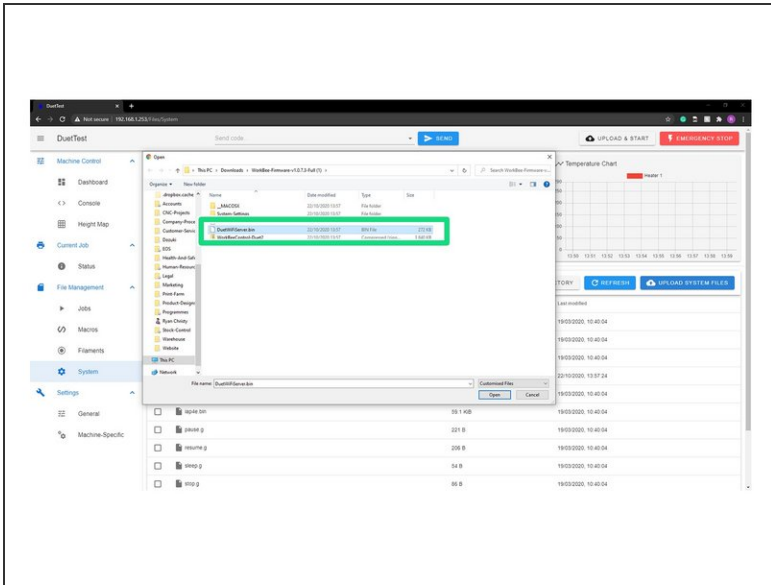
- Navigate to the unzipped firmware folder and select "Duet2CombinedFirmware.bin"

- Wait for the file to upload, and press "Yes" on the update prompt.

⚠ Wait for the update to complete.

⚠ The controller should automatically reboot after the update is complete. If not please press the emergency stop button to force restart the controller.

## Step 6 — Update Wifi Firmware



❗ If your version is different please - Click Upload Files under the Settings - General Tab in the Duet Web Control.

⚠ Only complete this step if you have the Wifi version of the Duet Controller.

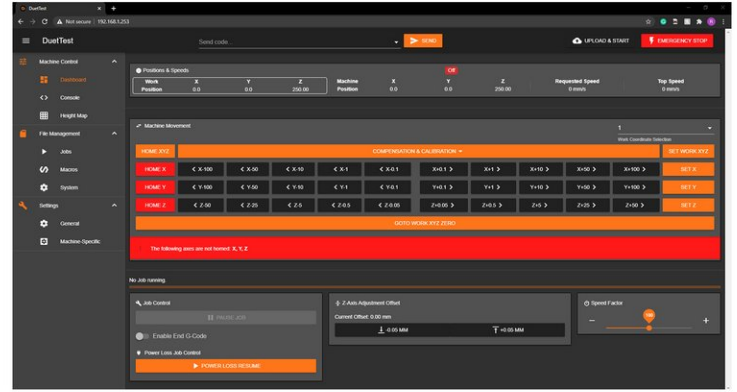
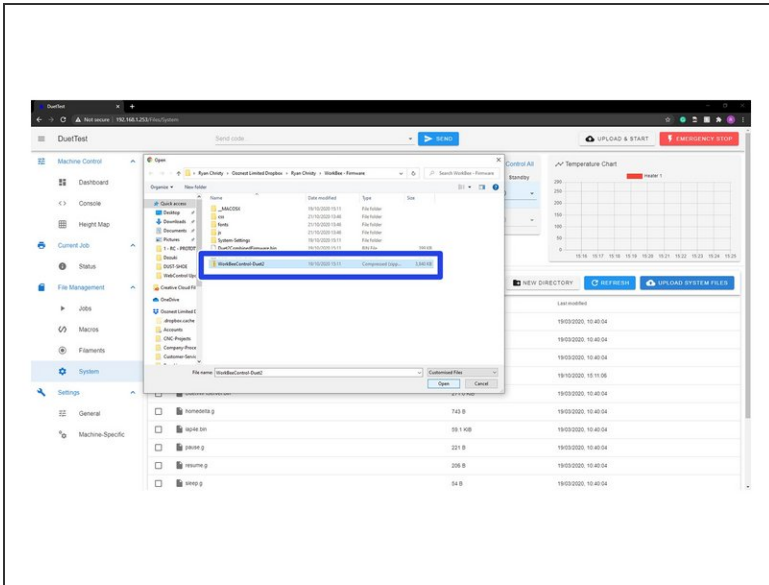
● Repeat Step 5 but this time for DuetWifiServer.bin (If applicable)

● Wait for the file to upload, and press "Yes" on the update prompt.

⚠ The controller should reboot automatically after the update is complete. If not please press the emergency stop button to force restart the controller.



## Step 7 — Update User Interface



- ❗ If your version is different please - Click Upload Files under the Settings - General Tab in the Duet Web Control.
- For all versions, repeat Step 5, but this time for WorkBeeControl-Duet2.zip this will now update your WorkBee CNC Machine to have the latest WorkBee Control User Interface.
- ⚠ Upload the .zip file. Do not unzip it before hand.
- ⚠ The controller should reboot automatically after the update is complete. If not please press the emergency stop button to force restart the controller.
- ❗ The interface should now look like image 2. If after rebooting you are still seeing the old interface, please close the current browser tab, and open a new one connecting to the same IP Address.

Thanks for following the guide. Please move onto the next guide to learn how to use your WorkBee CNC Machine. Any issues, please contact us!