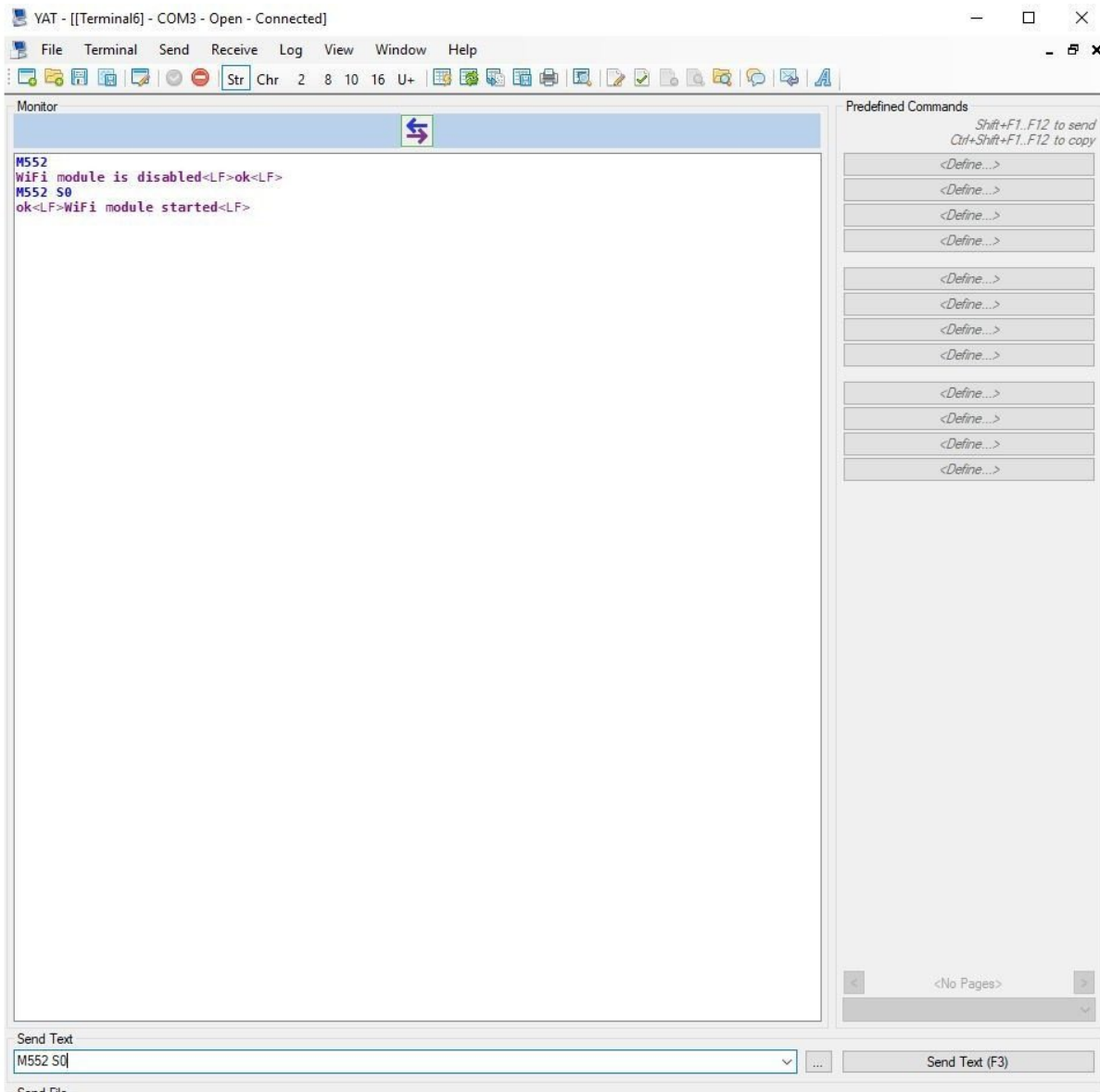




## 2. Connecting your Duet to a Network - Wifi

This Guide will provide the steps in Connecting your Duet Controller to your WiFi Network.

Written By: Ryan Christy

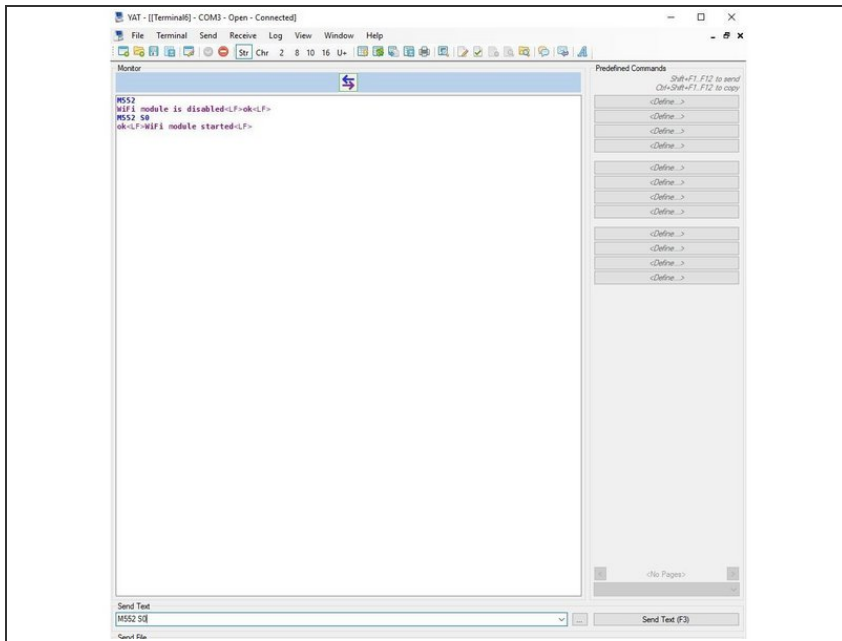


# INTRODUCTION

**Please read before proceeding to avoid damaging the controller and voiding your warranty**

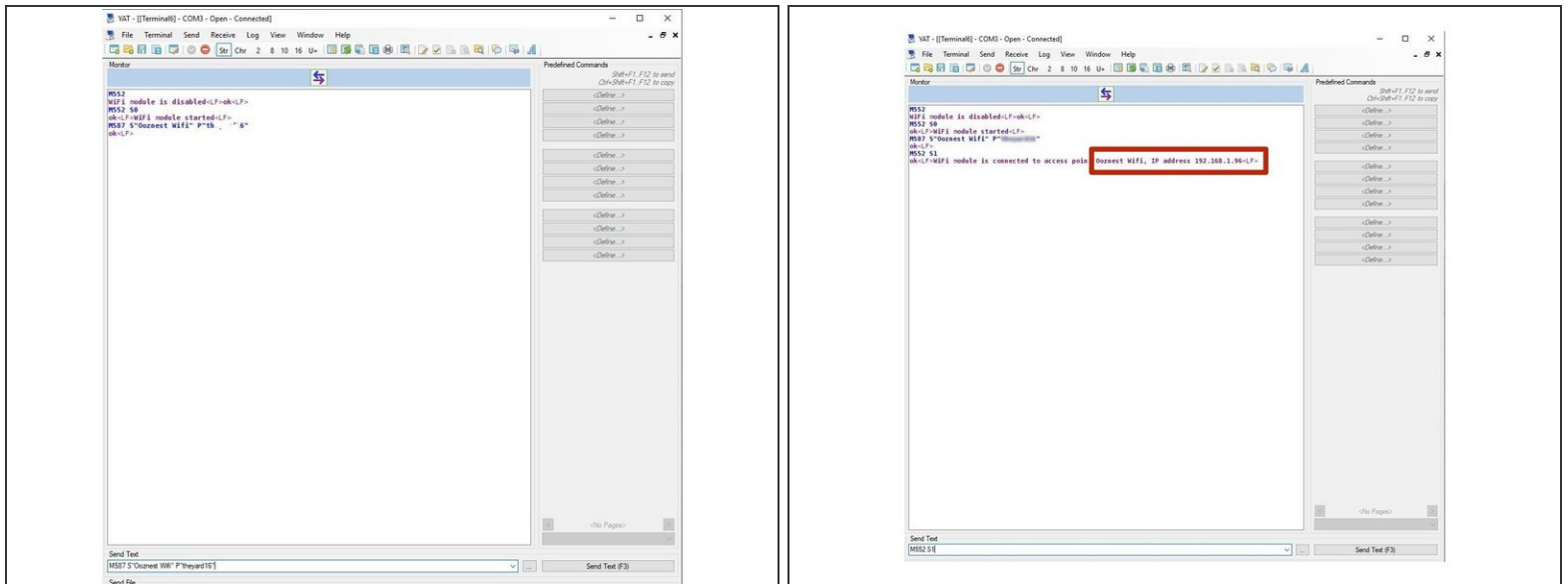
1. Avoid connecting the Duet via USB when you do not need to. (Except when instructed to in the guides)
2. Always unplug the WorkBee Power Supply before connecting the USB Cable.

## Step 1 — Enable Network Module



- ★ When connected to the Duet in Terminal, what you type isn't displayed. Therefore it is best to type the commands into TextEdit and copy > paste into terminal
- ❗ The WiFi module only supports 2.4Ghz networks. 5Ghz is not supported.
- Send the command M552 S0 to put the Wifi Module into idle mode.

## Step 2 — Wifi Network Settings



- Use the command M587 as shown below. Keep the double quotation marks, but substitute your-network-name with your Wifi SSID name and your-password with your WiFi password.

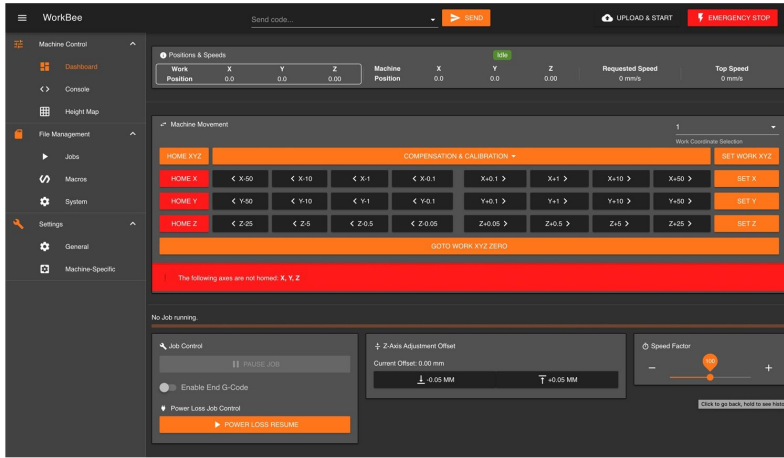
- M587 S"your-network-name" P"your-password"

**⚠ Enter the exact characters in your Wifi's SSID name and password. Both fields are case sensitive.**

**i** If your SSID name contains an apostrophe, enter two apostrophe characters in its place. For example, if your SSID name is Pete's network then enter "Pete's network".

- Send command M552 S1 to connect to your WiFi.
  - After a moment, it will confirm the connection and IP address of the machine.
- Your machine is now connected to your Wifi Network. (The blue light should be solid on the Wifi module of the Duet Controller)

## Step 3 — Check Access to Duet Web Interface



- Open your browser and enter the url: <http://workbee.local/>
- You should now see the WorkBee Control Interface!
- ❗ Bookmark the url and add it to your favourites for easier access in the future.
- ❗ If the above url does not work. Please use the IP Address returned in the previous step to connect to the machine. Bookmark this IP Address.
- Unplug the USB Cable from your computer and Duet Controller. The WorkBee Control Interface will disconnect.
- Plug the mains cable of the Power Supply into the wall socket.
- Turn on the wall socket and the power switch on the side of the Power Supply.
- After a short delay, refresh the browser. It should reconnect to WorkBee Control.

Thanks for following the guide. Any issues, please contact us!