



1. Connecting your Duet to a Network - Ethernet

This Guide will provide the steps in Connecting your Duet by Ethernet directly to your Computer

Written By: Robert

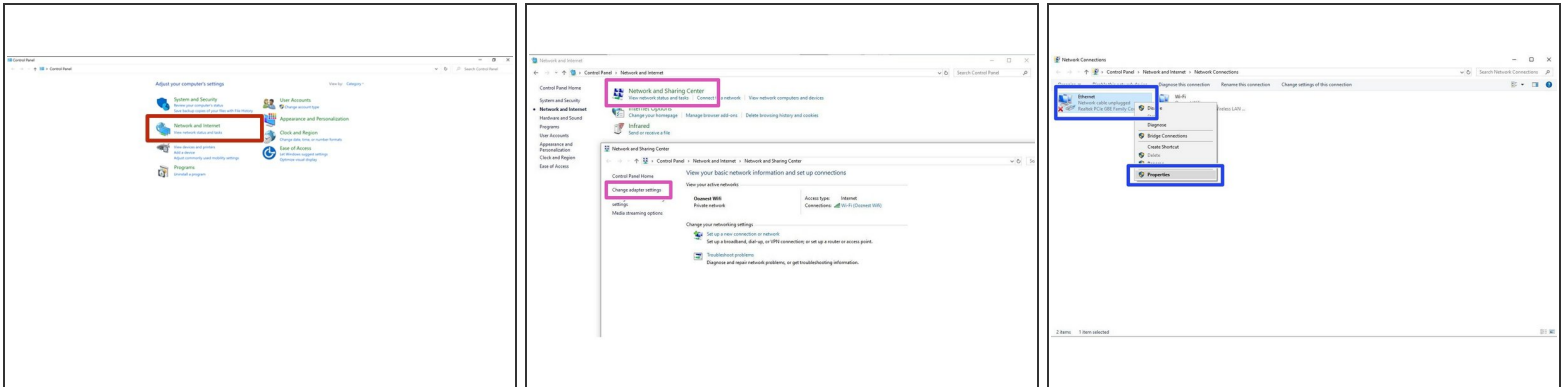


INTRODUCTION

Please read before proceeding to avoid damaging the controller and voiding your warranty

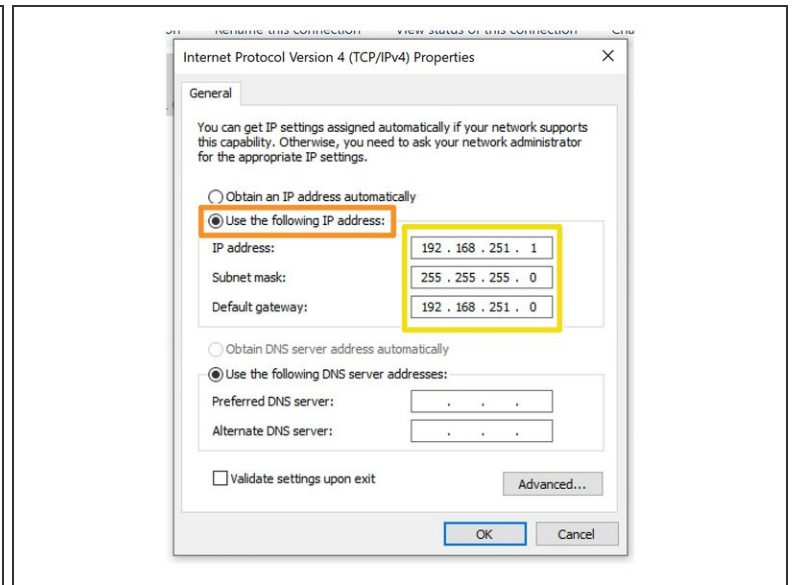
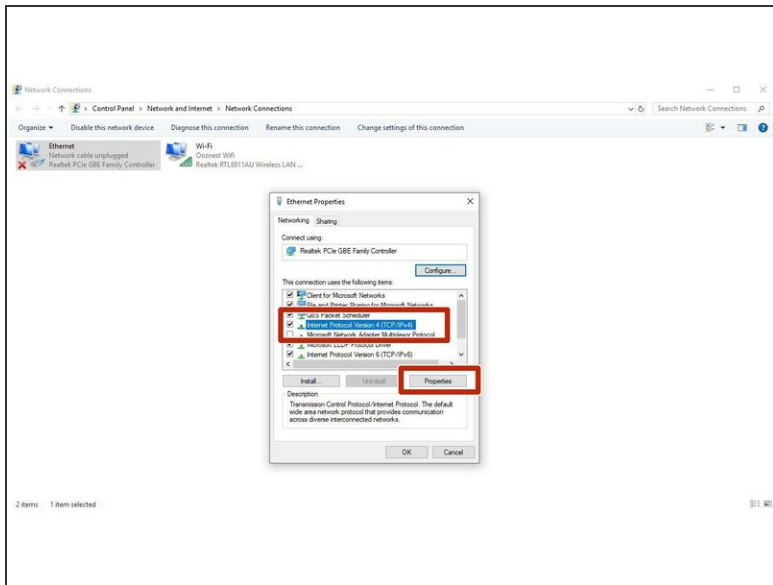
1. Avoid connecting the Duet via USB when you do not need to. (Except when instructed to in the guides)
2. Always unplug the WorkBee Power Supply before connecting the USB Cable.

Step 1 — Access Ethernet Port Settings



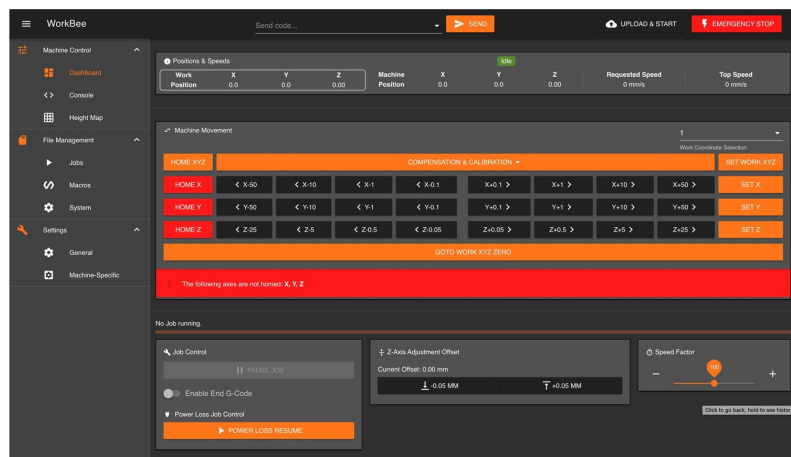
- Open the Control Panel on your windows computer.
 - Click 'Network and Internet'.
 - Open the 'Network and Sharing Center' and click 'Change Adaptor Settings'.
 - Right Click on the Ethernet Port and click 'Properties'.
- ① For Mac users goto System Preferences > Network. Select 'Ethernet' from the left pane.

Step 2 — Configure Ethernet Port Part 2



- Click on 'Internet Protocol Version 4' so it is highlighted. Then press the 'Properties' button.
- Select 'Use the following IP address'
 - ① For Mac users change the 'Configure IPv4' dropdown to 'Manually'
- Enter the following IP Addresses
 - IP Address: 192.168.251.1
 - Subnet mask: 255.255.255.0
 - Default gateway: 192.168.251.0
 - ① For Mac users set Router: 192.168.251.0

Step 3 — Open Duet Webcontrol



- Plug the Ethernet Cable into the Ethernet port on the Duet Controller. Plug the opposite end into the Ethernet port on your computer.
- Plug the mains cable of the Power Supply into the wall socket.
- Turn on the wall socket and the power switch on the side of the Power Supply.
- Open your browser and enter the url: <http://workbee.local/>
- You should now see the WorkBee Control Interface!
- ① Bookmark the url and add it to your favourites for easier access in the future.
- ① If the above url does not work. Please use the IP Address 192.168.251.2 to connect to the machine. Bookmark this IP Address.

Thanks for following the guide. Any issues, please contact us!