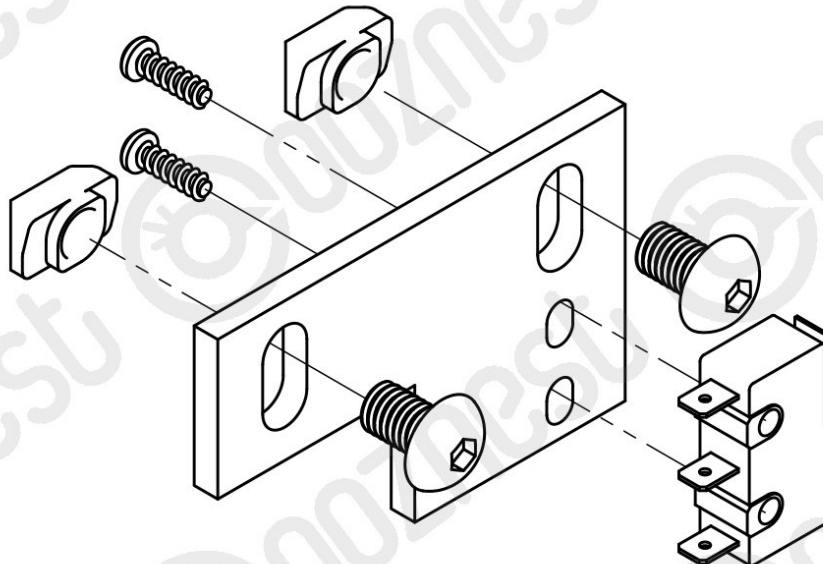




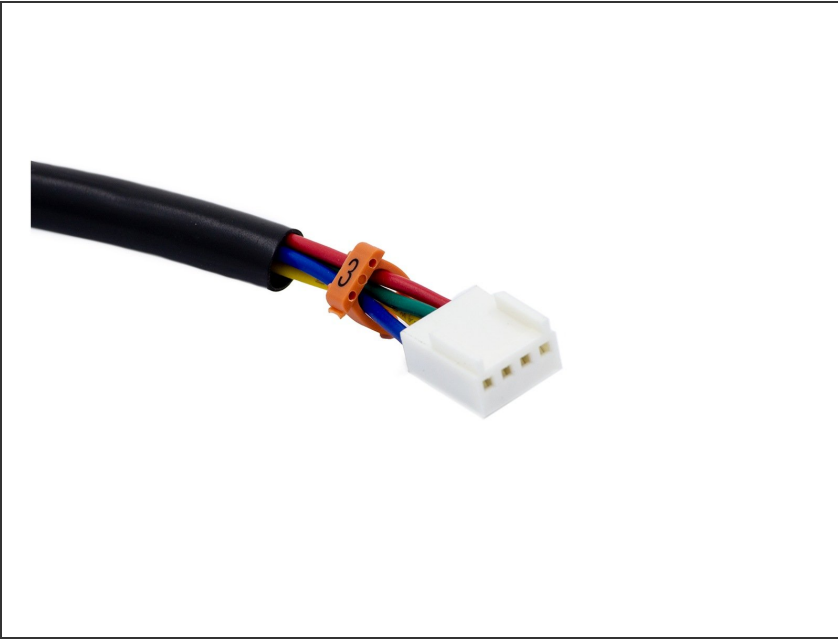
2. Limit Switches

This guides goes over assembling and mounting the limit switches for your WorkBee CNC Machine.

Written By: Robert

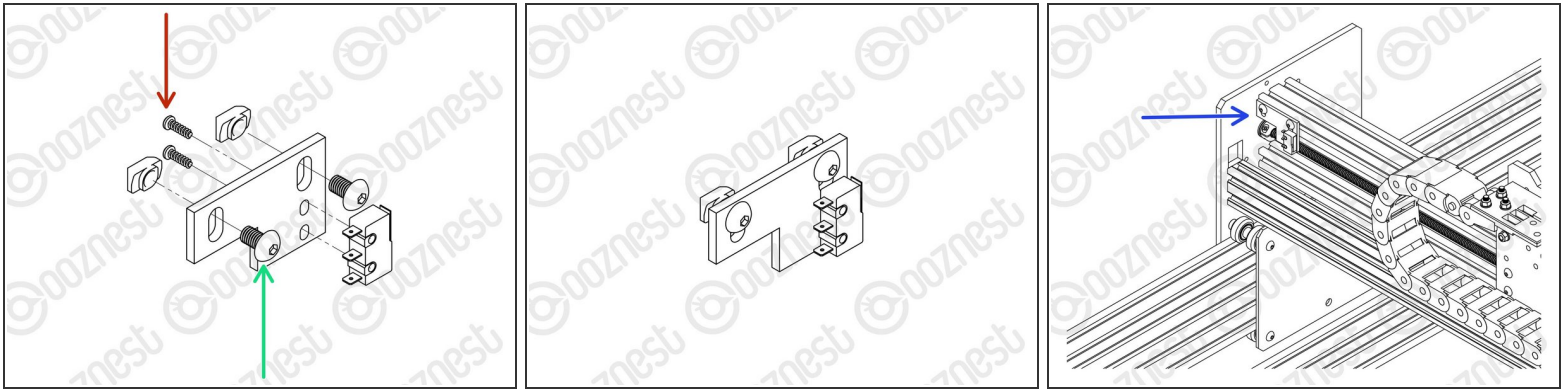


Step 1 — Cheat Sheet



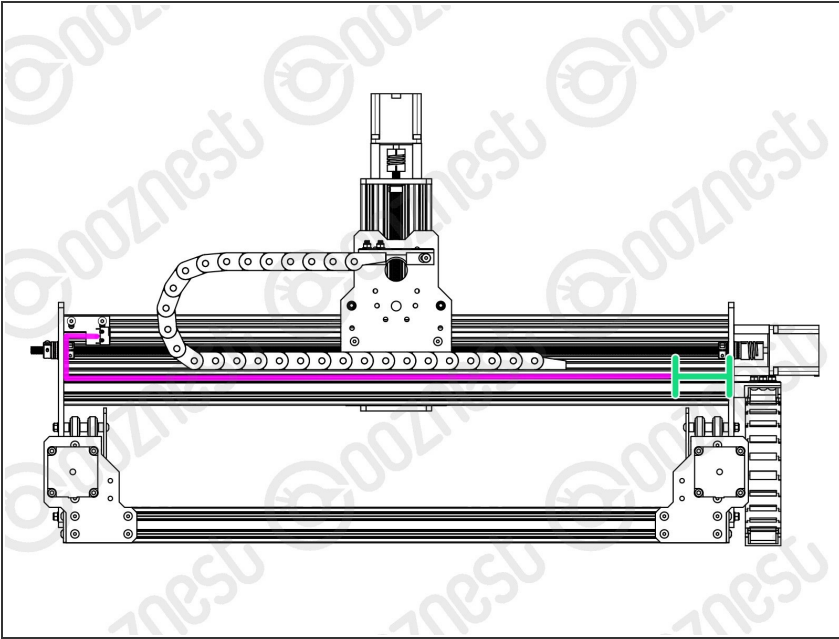
- You are going to need our Motor Wire and Limit Switch [Cheat Sheet](#). We recommend printing it off!

Step 2 — X-Axis Limit Switch



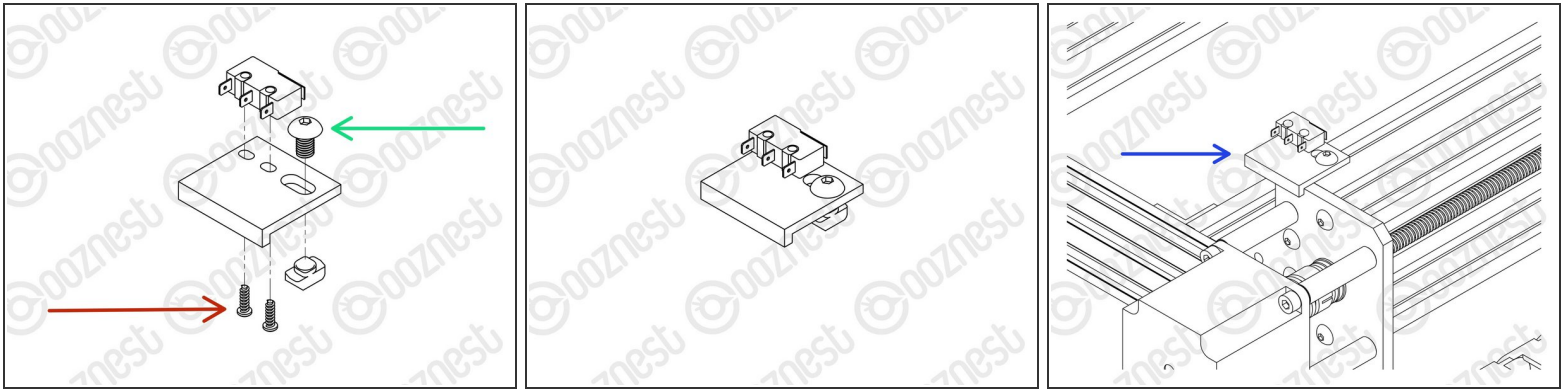
- Attach Limit-Switch-0 to the X-Limit-Switch-Mount using 2 x M3-Plastite-Screw-8mm.
- The M3-Plastite-Screw-8mm's go through the X-Limit-Switch-Mount first, then self thread into Limit-Switch-0.
 - ⓘ A Pozi #1 Screwdriver should be used.
 - ⓘ The best technique is to thread into Limit-Switch-0 a small amount, then back out. Then back in further, back out, so on so fourth until Limit-Switch-0 is secure.
- ⚠ Do not over tighten as you can shatter the switch. Make sure Limit-Switch-0 is orientated correctly.
- Insert 2 x M5-Button-Head-Bolt-8mm through the elongated holes on the X-Limit-Switch-Mount and slightly thread on 2 x M5-Drop-In-Tee-Nut.
- Attach the X-Limit-Switch-Mount to the back of Extrusion-E. It should be at the left side if looking from the back. The X-Limit Switch-Mount should be up against the Y-Carriage.
- ⚠ Make sure the M5-Drop-In-Tee-Nuts are engaged with the slots on Extrusion-E.

Step 3 — Slot Cover



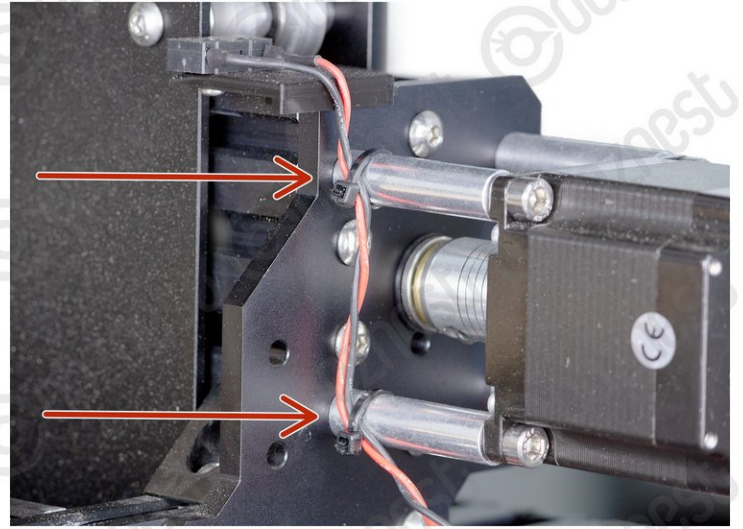
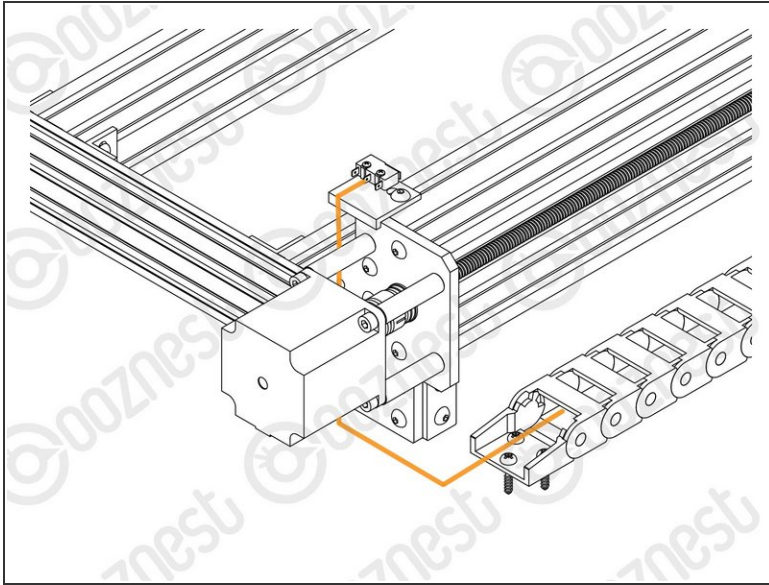
- With sharp scissors cut 50mm off one end of the Slot-Cover keeping the longer piece.
- The wire of Limit-Switch-0 runs inside the back top slot of Extrusion-B.
- Put the wire in this slot, and insert the Slot-Cover over it to hold it in place.
- There should be a 50mm gap of exposed slot on the opposite end of Extrusion-B.

Step 4 — Y-Axis Limit Switch



- ① Limit-Switch-1 you inserted into Drag-Chain-Y in the previous guide. It should be sticking out the Fixed End of Drag-Chain-Y.
- Attach Limit-Switch-1 to the Y-Limit-Switch-Mount using 2 x M3-Plastite-Screw-8mm.
 - The M3-Plastite-Screw-8mm's go through the Y-Limit-Switch-Mount first, then self thread into Limit-Switch-1.
- ① The best technique is to thread into Limit-Switch-1 a small amount, then back out. Then back in further, back out, so on so fourth until Limit-Switch-1 is secure.
- ⚠ Do not over tighten as you can shatter the switch. Make sure Limit-Switch-1 is orientated correctly.
- Insert a M5-Button-Head-Bolt-8mm through the elongated hole on the Y-Limit-Switch-Mount and slightly thread on a M5-Drop-In-Tee-Nut.
- Attach the Y-Limit-Switch-Mount to the back of Extrusion-F. It should be on the right Extrusion-F if looking from the back. The Y-Limit Switch Mount should locate on the corner of Extrusion-F.
- ⚠ Make sure the M5-Drop-In-Tee-Nut is engaged with the slot on Extrusion-F.

Step 5 — Y-Axis Limit Switch Wire



- The wire of Limit-Switch-1 should follow the direction shown in Image 1.
- Use 2 x Cable-Tie-Small on the Aluminium-Spacer-40mms to keep it in place as shown in Image 2.
- ① Any slack in the wire of Limit-Switch-1 should be pulled out of the opposite end of the Drag-Chain-Y.
- ⚠ Double check your wire routing matches Image 2.

Step 6 — Guide Complete



- ① It is all starting to come together now.
- Guide Complete - Proceed to [3. Power Supply & Emergency Stop](#)

Thanks for following the guide. Any issues, please contact us!