



1. Connecting your Controller to a Network - Ethernet

Written By: Ryan Christy

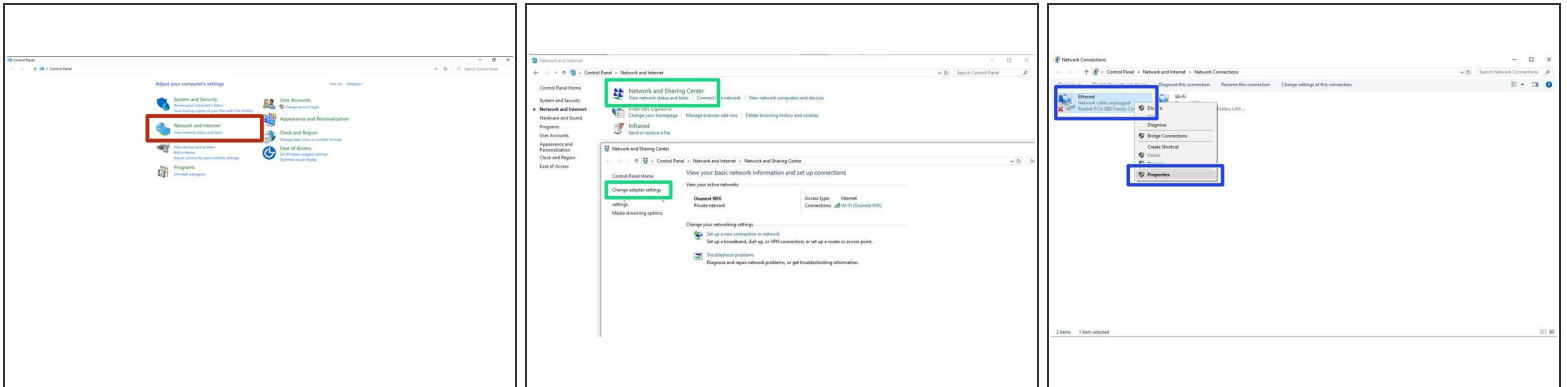


INTRODUCTION

Please read before proceeding to avoid damaging the controller and voiding your warranty

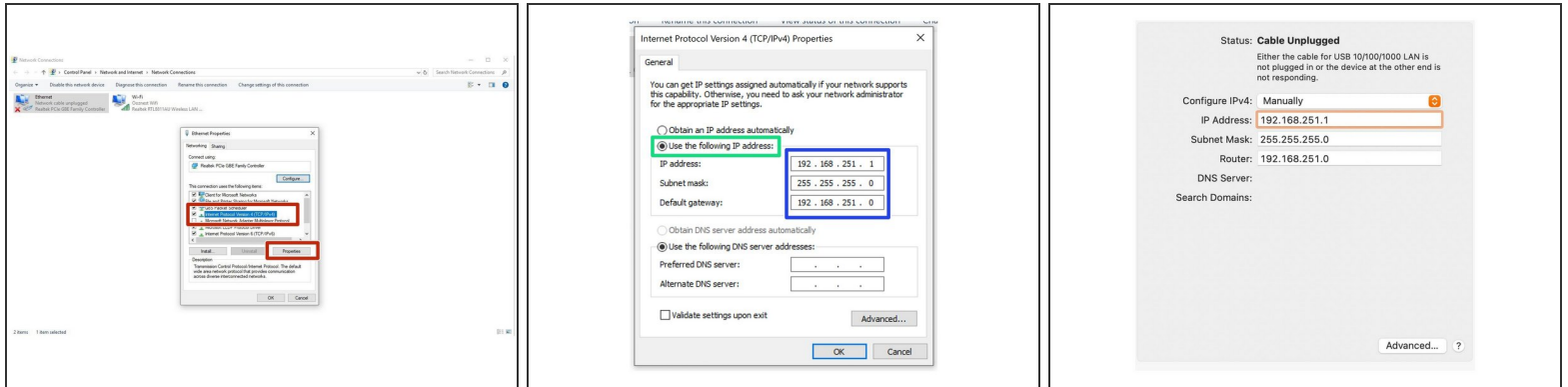
1. Avoid connecting the Controller via USB when you do not need to. (Except when instructed to in the guides)
2. Always unplug the WorkBee Power Supply before connecting the USB Cable.

Step 1 — Access Ethernet Port Settings



- Open the Control Panel on your windows computer.
 - Click 'Network and Internet'.
 - Open the 'Network and Sharing Center' and click 'Change Adaptor Settings'.
 - Right Click on the Ethernet Port and click 'Properties'.
- i** For Mac users goto System Preferences > Network. Select 'Ethernet' from the left pane.

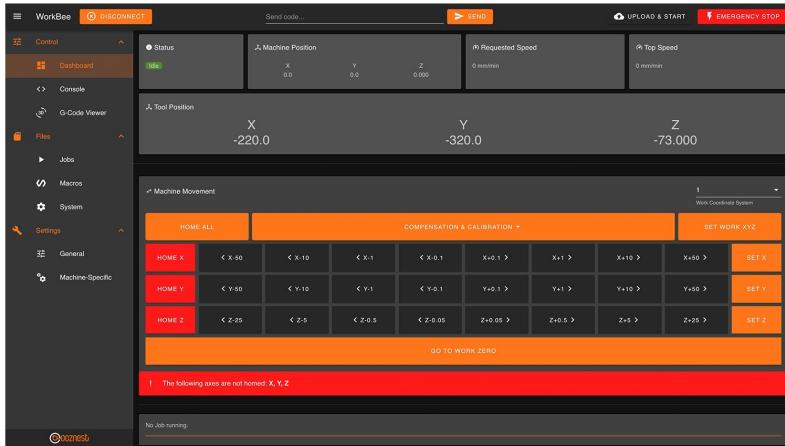
Step 2 — Ethernet Port Settings



- Click on 'Internet Protocol Version 4' so it is highlighted. Then press the 'Properties' button.
- Select 'Use the following IP address'
- ⚠ For Mac users change the 'Configure IPv4' dropdown to 'Manually'
- Enter the following IP Addresses
 - IP Address: 192.168.251.1
 - Subnet mask: 255.255.255.0
 - Default gateway: 192.168.251.0 (On a Mac this is called Router)

⚠ For Mac users see Image 3 for correct settings.

Step 3 — Check You Are Connected



- Plug the Ethernet Cable into your computer.
 - Plug the Mains Cable into the Power Supply and then into the wall socket.
 - Unlatch the Emergency Stop and turn on the wall socket.
 - Open your browser and enter the url: <http://workbee.local/>
 - You should now see the WorkBee Control Interface!
- i** Bookmark the url and add it to your favourites for easier access in the future.
- i** If the above url does not work. Please use the IP Address <http://192.168.251.2/> to connect to the machine. Bookmark this IP Address.

Step 4 — Guide Complete



- ① Welcome to WorkBee Control!
- Guide Complete - Proceed to [1. Final Assembly](#)

Thanks for following the guide. Any issues, please contact us!