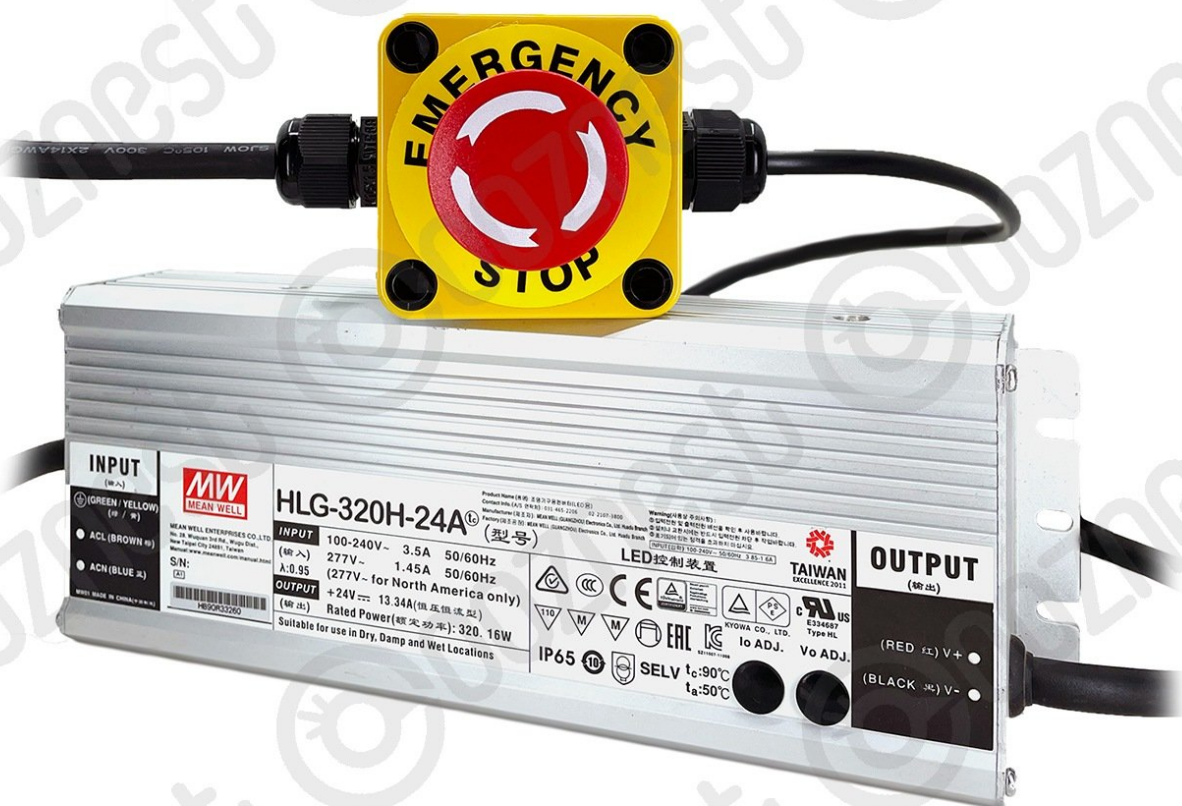




# Assembling Your Original WorkBee Z1+ Power Supply & Emergency Stop

Written By: Robert

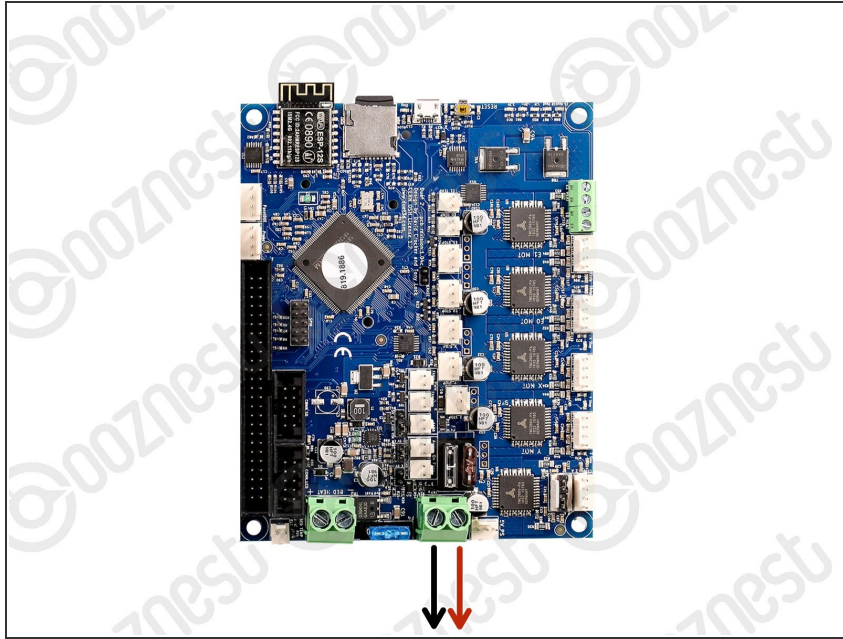


## Step 1 — Emergency Stop



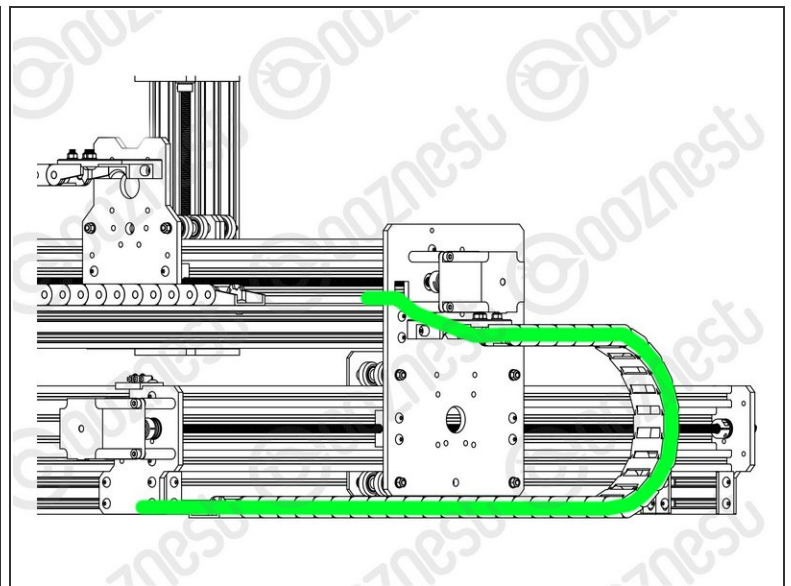
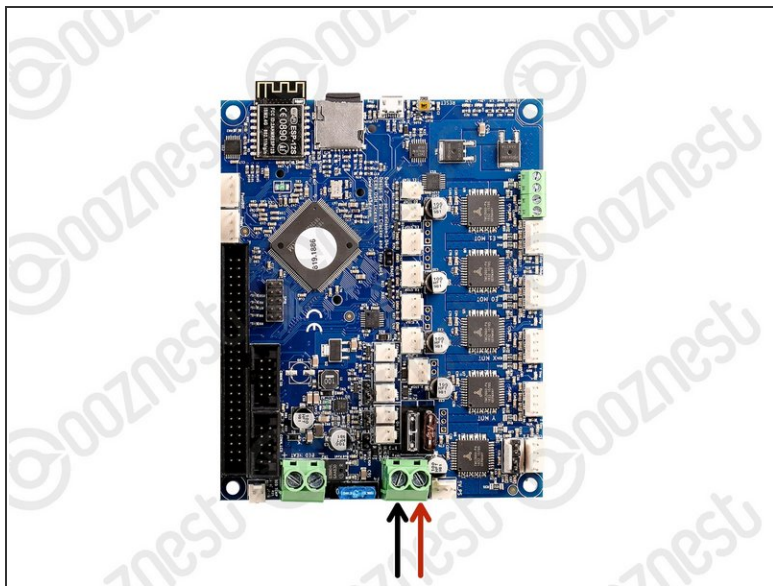
- ⚠ The user is solely liable for ensuring operation of the WorkBee with this Emergency Stop is compliant with the necessary safety requirements of their workspace.
- ⚠ The Emergency Stop is not an On/Off button. The use of the Emergency Stop should be unconditional with no decision-making process involved.
- ⚠ The Emergency Stop will only stop the movement of the WorkBee. It will not stop the Router Head.
  - ⚠ It is up to the user to decide whether the Router Head can be suitably stopped in an emergency situation.
- ⚠ The Emergency Stop has been wired and tested by Ooznest. Do not tamper with it. It is void if tampered with.
- ⚠ The Emergency Stop is void if used on anything other than an Ooznest Original WorkBee provided by Ooznest using standard parts and default settings. The Emergency Stop is void if any peripherals are connected to the controller of the Original WorkBee, other than those listed on [learn.ooznest.co.uk](https://learn.ooznest.co.uk) but not including the community sections.

## Step 2 — Remove Old Power Supply



- Unwire the PSU-Output-Cable from the controller.
- Remove the PSU-Output-Cable from the Drag-Chain-Y
- The old PSU-Output-Cable, Power-Supply, & Mains-Cable are no longer needed.

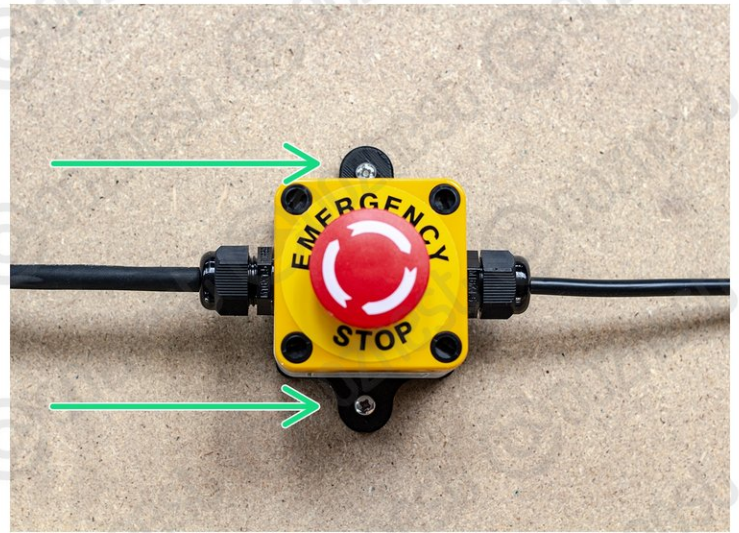
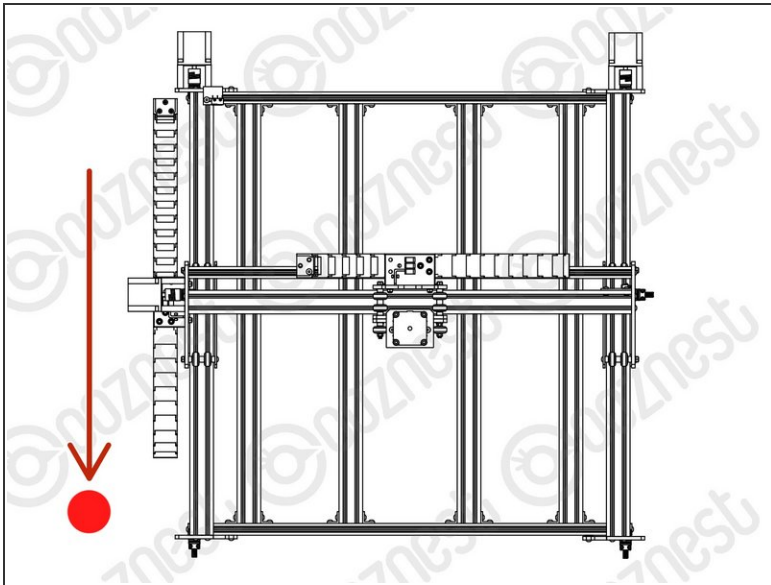
## Step 3 — Wiring



- Feed through the output cable of the Emergency-Stop through Drag-Chain-Y
  - Connect the output wire of the Emergency-Stop into the input screw terminal on the controller.
- ⚠ Use an Insulated Flathead Screwdriver.

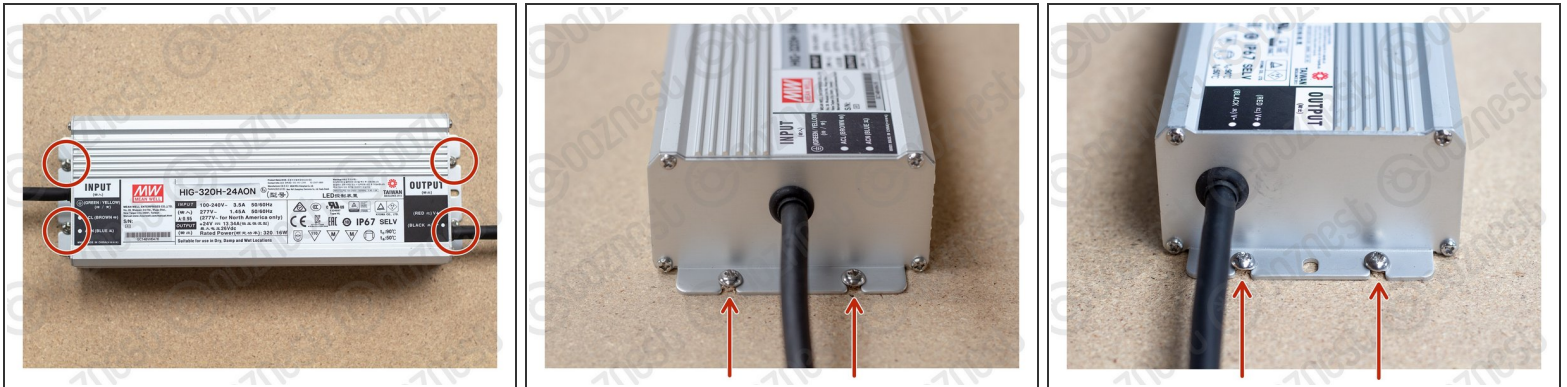


## Step 4 — Mounting the Emergency Stop



- ⚠ If there is access around all 4 sides of the machine, we recommended mounting the Emergency-Stop button on your workbench at the front left corner of the machine.
- ⚠ This suggested positioning is a recommendation. It is up to the user to ensure the Emergency Stop is located in a suitable position with easy access in an emergency situation.
- Position the Emergency Stop in a suitable position.
  - Use 2 x Button-Head-Screw-20mm's to secure the Emergency Stop to the workbench through the holes located on the bracket.
  - A Pozi #2 Screwdriver should be used.
- ① We recommend trailing the cables under your workbench to keep the surface free of cables.

## Step 5 — Mounting the Power Supply



- Using 4 x Button-Head-Screw-20mm mount the Power Supply.
  - ① The position of the Power Supply depends on where your wall power outlets are.
  - ① The mains cable provided is 2.5m.
  - ① Ideally it should be mounted on a shelf under the machine, or on the underside of the worktop.

## Step 6 — Testing The Emergency Stop



- The Emergency Stop has been pre-tested by Ooznest. But you should test it again.
- First unlatch the Emergency-Stop and insure the machine is switched on, and have WorkBee Control open on your web browser.
- Press the Emergency Stop.
- You should loose connection to WorkBee Control.
  - ⚠ **If you do not loose connection make sure the USB Cable is not plugged in.**
  - ⚠ **If you still do not loose connection, stop here and Contact Us.**
- With the connection lost, unlatch the Emergency Stop.
- After a few seconds WorkBee Control should reconnect.

Thanks for following the guide. Any issues, please contact us!