



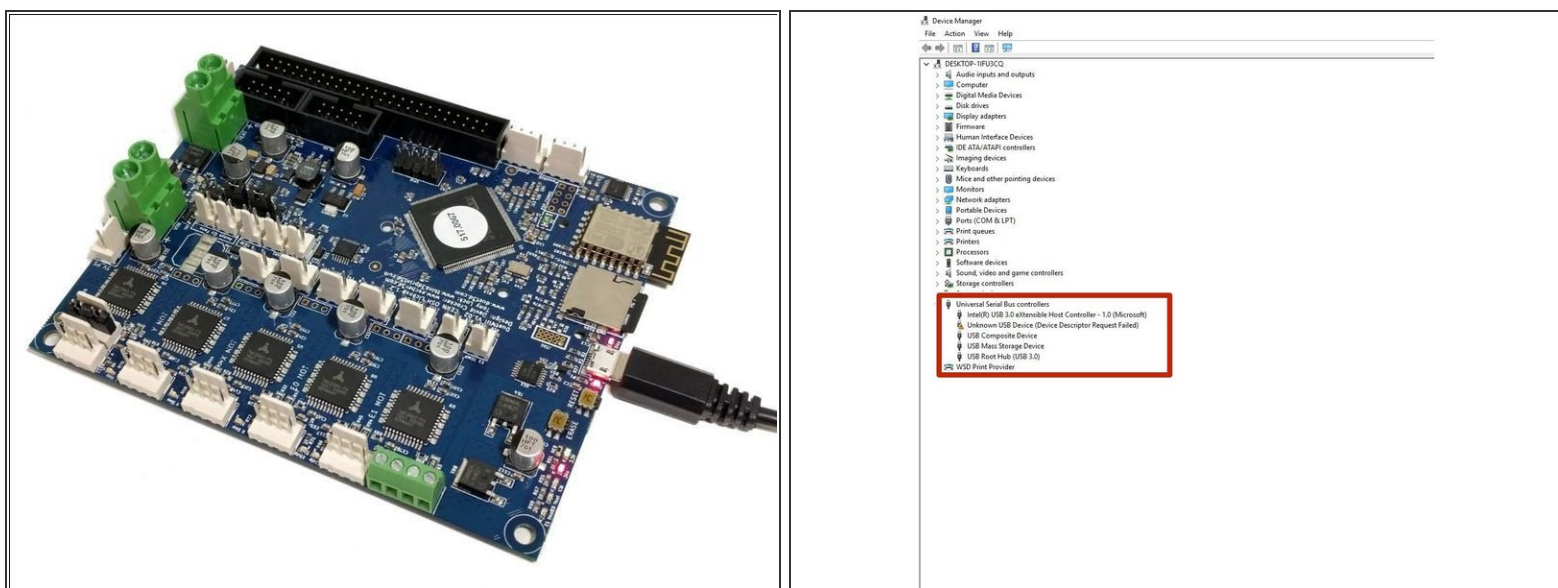
1. Connecting your Duet via USB - Windows

This Guide will provide the steps in getting your Duet Connected via USB using a Windows Computer.

Written By: Ryan Christy

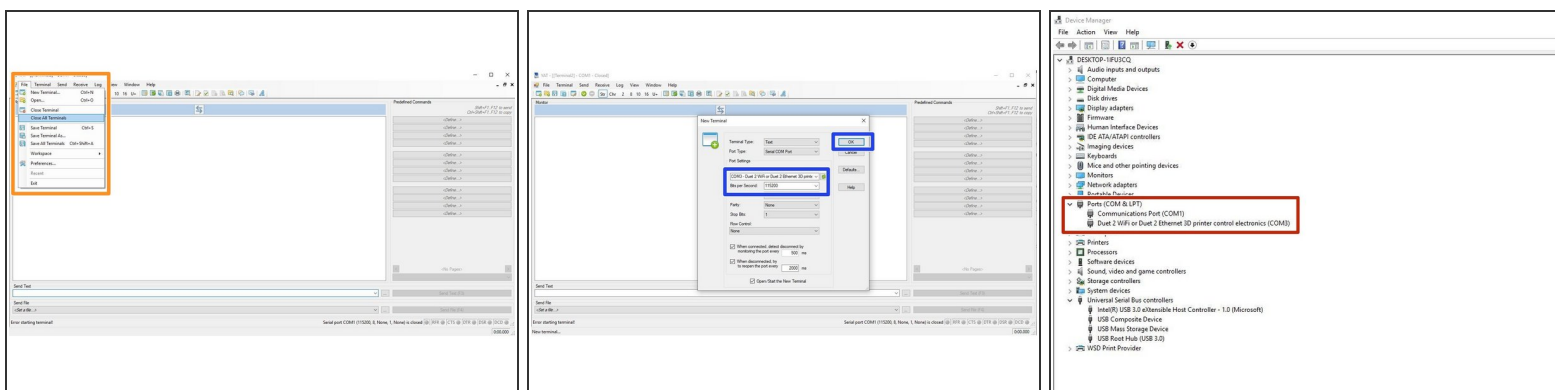


Step 1 — Connect to your Duet Via USB



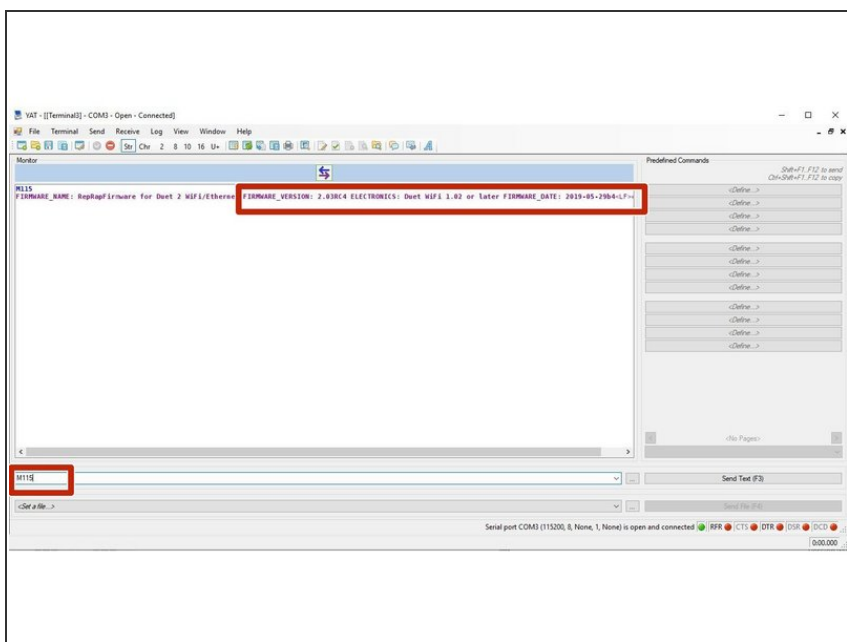
- Download the USB drivers for Duet [here](#) and extract the files to a suitable location.
- Connect the Duet to your PC with the USB cable provided. Do not connect other power supplies at this stage.
- To install drivers, open Device Manager by pressing Windows Key + R and type devmgmt.msc, or launch from the Start menu by typing "Device Manager".
- Look for any devices with a yellow triangle which would indicate that the driver is not installed. If no devices have this indicator, then the driver was successfully installed.
- If a USB device does show the yellow triangle, right click on the device. Click Install Driver and browse to the location of the driver that was downloaded at the beginning of this step. Continue setup by clicking "Next" until the device driver has been installed.

Step 2 — Connect YAT to your Duet



- Download and Install YAT [here](#).
- Open YAT and go to - File -> Close all terminals.
 - Go to File -> Open Terminal
 - Configure the correct COM port, changing the Bits per Second to 115200.
 - Once configured press OK to connect to your Duet.
- ❗ If unsure of the COM port number, press Windows Key + R on your keyboard and type devmgmt.msc
 - Your Duet will be listed under Ports (COM & LPT) as USB Serial Device (COM#) or similar. Use COM# as the com port in YAT.

Step 3 — Check your Connected



- After the COM port has been configured, send command "M115" to the Duet board.
- The Duet will return the firmware version being used confirming the connection to the Duet.

Thanks for following the guide. Any issues, please contact us!