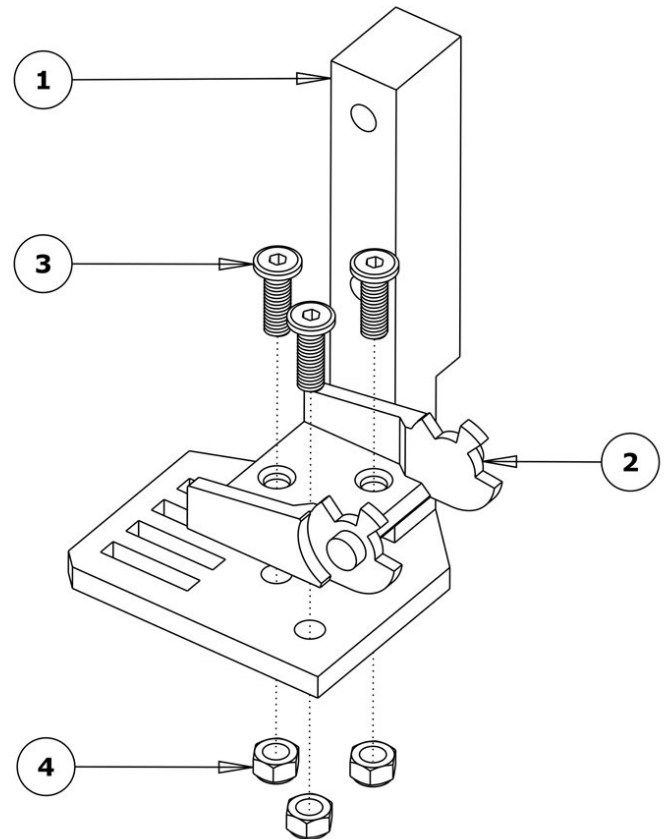
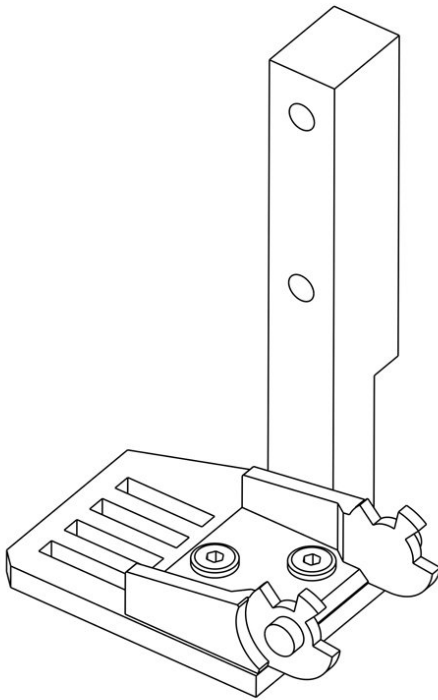




1. Y-Axis Drag Chain Assembly

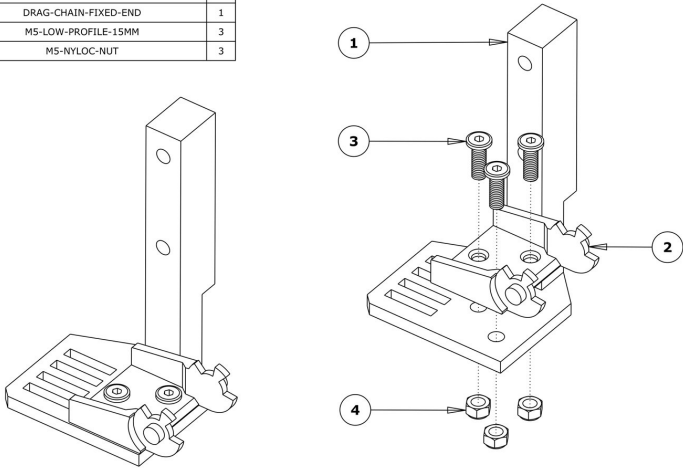
Written By: Harry Ince

ITEM NO	DESCRIPTION	QTY
1	Y-DRAG-CHAIN-FIXED-END-MOUNT	1
2	DRAG-CHAIN-FIXED-END	1
3	M5-LOW-PROFILE-15MM	3
4	M5-NYLOC-NUT	3



Step 1 — Y-Axis Fixed End Assembly

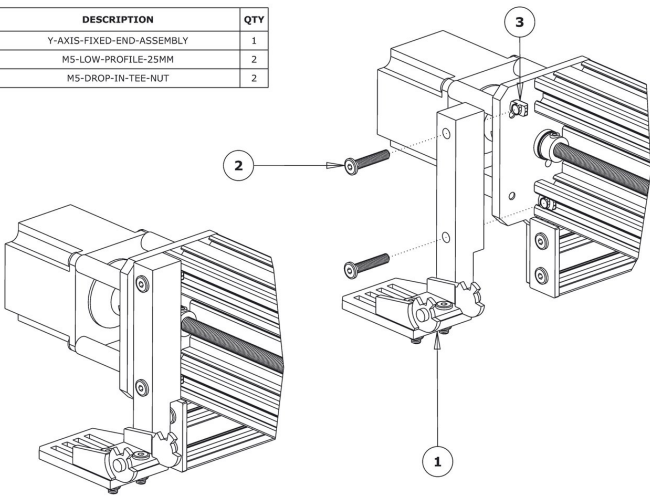
ITEM NO	DESCRIPTION	QTY
1	Y-DRAG-CHAIN-FIXED-END-MOUNT	1
2	DRAG-CHAIN-FIXED-END	1
3	M5-LOW-PROFILE-15MM	3
4	M5-NYLOC-NUT	3



- Attach a Drag-Chain-Fixed-End to the Y-Drag-Chain-Fixed-End-Mount in the orientation shown above, using 3 x M5-Low-Profile-15mm bolts and 3 x M5-Nyloc-Nuts.

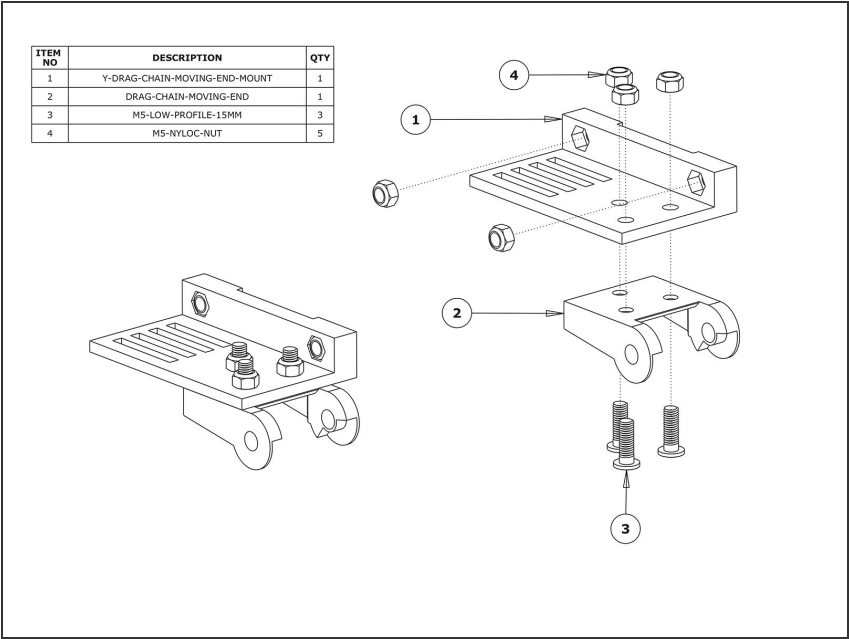
Step 2 — Y-Axis Fixed End Mounting

ITEM NO	DESCRIPTION	QTY
1	Y-AXIS-FIXED-END-ASSEMBLY	1
2	M5-LOW-PROFILE-25MM	2
3	M5-DROP-IN-TEE-NUT	2



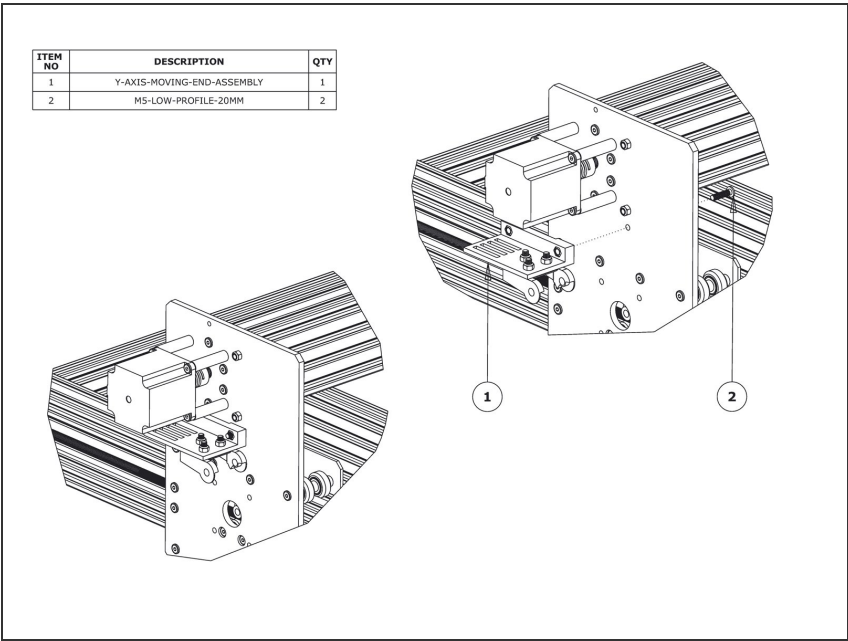
- Position the Y-Axis-Fixed-End-Assembly to the back left corner of the WorkBee.
- It should be flush with the end of the C-Beam-750mm. Secure it using 2 x M5-Low-Profile-25mm bolts and 2 x M5-Drop-In-Tee-Nuts.

Step 3 — Y-Axis Moving End Assembly



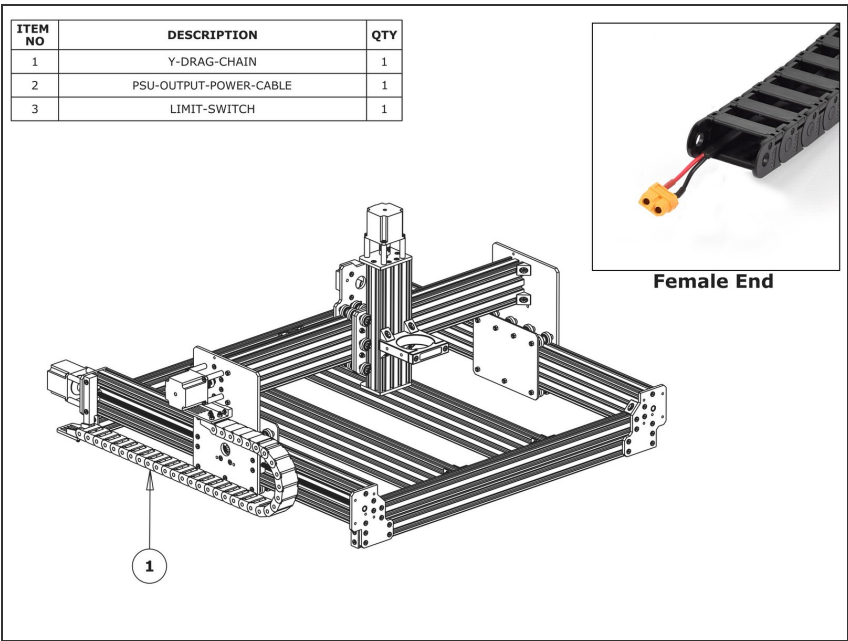
- Insert 2 x M5-Nyloc-Nuts into the insets on the Y-Drag-Chain-Moving-End-Mount. They are a snug fit, so may require a light tap with a hammer.
- Attach a Drag-Chain-Moving-End to the Y-Drag-Chain-Moving-End-Mount in the orientation shown above using 3 x M5-Low-Profile-15mm bolts and 3 x M5-Nyloc-Nuts.

Step 4 — Y-Axis Moving End Mounting



- Secure the Y-Axis-Moving-End-Assembly using 2 x M5-Low-Profile-20mm bolts and the 2 x M5-Nyloc-Nuts already inserted into Y-Drag-Chain-Moving-End-Mount.

Step 5 — Y-Drag-Chain



- Lay the Y-Drag-Chain flat on a table. Feed the PSU-Output-Power-Cable through the whole length of the Y-Drag-Chain. Ensure that the end with the XT60-Connector, is located at the female end of the Y-Drag-Chain. (as shown in the 'Female End' image).

- If you have a screw driven WorkBee feed the two Y-Axis motor wires through the Y Drag-Chain. The end of the stepper motor wires with the black connector should be at the female end of the Y-Drag-Chain - same as above.

⚠ Ignore this step if you have any other WorkBee drive variant.

- For all WorkBee Variants, feed the wires on the Y-Axis Limit-Switch, through the Y Drag-Chain. The switch portion of the Limit-Switch should be at the female end of the Y-Drag-Chain.
- Lay the Y-Drag-Chain flat along the left side of the WorkBee. The female end of the Y-Drag-Chain should be at the back of the machine, and the male end at the front.
- Attach the female end of the Y-Drag-Chain to the Drag-Chain-Fixed-End on the Y-Axis Fixed-End-Assembly. It will take some force to click it into the Drag-Chain-Fixed-End.
- Bring the male end of the Y-Drag-Chain to the Y-Axis-Moving-End-Assembly and attach it to the Drag-Chain-Moving-End. It will take some force to click it into the Drag-Chain-Moving-End.

Thanks for following the guide. Any issues, please contact us!