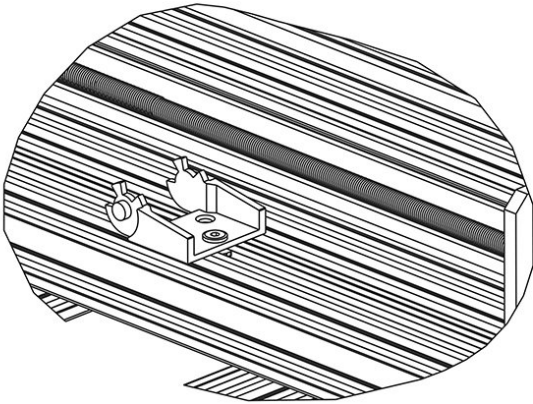
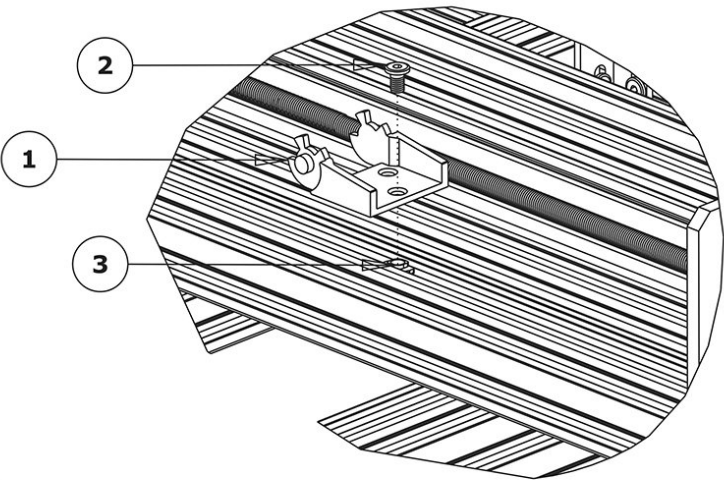




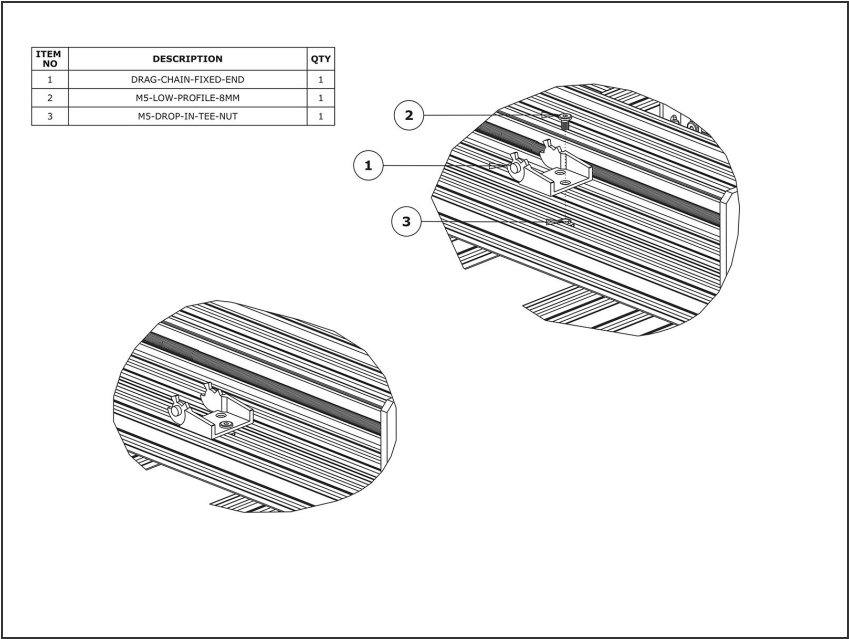
2. X-Axis Drag Chain Assembly

Written By: Harry Ince

ITEM NO	DESCRIPTION	QTY
1	DRAG-CHAIN-FIXED-END	1
2	M5-LOW-PROFILE-8MM	1
3	M5-DROP-IN-TEE-NUT	1



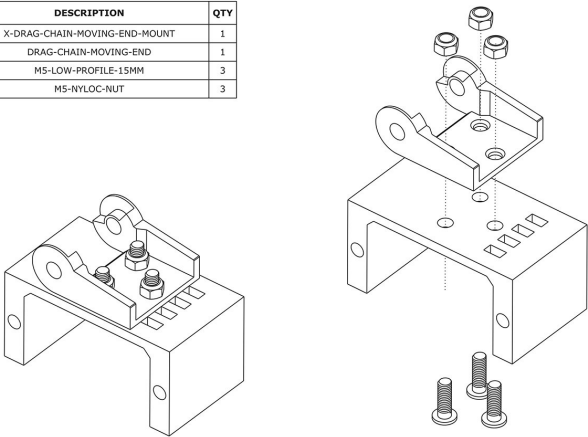
Step 1 — X-Axis Fixed End Mounting



- Attach a Drag-Chain-Fixed-End to the V-Slot-2040-750mm using an M5-Low-Profile 8mm and an M5-Drop-In-Tee-Nut.
- It should be located 150mm from right hand end of the V-Slot-2040-750mm if looking from the back. Ensure that it is parallel with the V-Slot-2040-750mm.

Step 2 — X-Axis Moving End Assembly

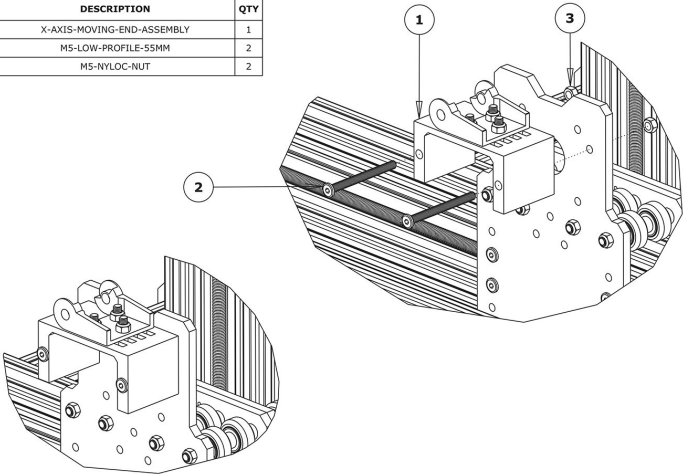
ITEM NO	DESCRIPTION	QTY
1	X-DRAG-CHAIN-MOVING-END-MOUNT	1
2	DRAG-CHAIN-MOVING-END	1
3	M5-LOW-PROFILE-15MM	3
4	M5-NYLOC-NUT	3



- Attach a Drag-Chain-Moving-End to the X-Drag-Chain-Moving-End-Mount in the orientation shown above using 3 x M5-Low-Profile-15mm bolts and 3 x M5-Nyloc-Nuts.

Step 3 — X-Axis Moving End Mounting

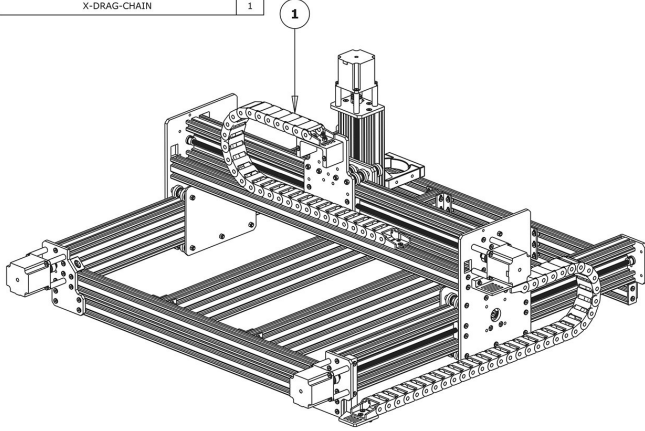
ITEM NO	DESCRIPTION	QTY
1	X-AXIS-MOVING-END-ASSEMBLY	1
2	M5-LOW-PROFILE-55MM	2
3	M5-NYLOC-NUT	2



- Secure the X-Axis-Moving-End-Assembly to the X-Plate-Back using 2 x M5-Low-Profile-55mm bolts and 2 x M5-Nyloc-Nuts.

Step 4 — X-Drag-Chain

ITEM NO	DESCRIPTION	QTY
1	X-DRAG-CHAIN	1



- Like with the Y-Axis, lay the X-Drag-Chain flat on a table. If you have a screw driven WorkBee feed through the Z-Axis stepper motor wire. If you have a belt driven WorkBee feed through the X-Axis and Z-Axis motor wires.
- The end of the stepper motor wires with the black connectors should be at the male end of the X-Drag-Chain (opposite to Y-Axis).
- Attach the female end of the X-Drag-Chain to the Drag-Chain-Fixed-End on the V Slot-2040-750mm. It will take some force to click it into the Drag-Chain-Fixed-End.
- Bring the male end of the X-Drag-Chain up to the X-Axis-Moving-End-Assembly and attach it to the Drag-Chain-Moving-End. It will take some force to click it into the Drag-Chain-Moving-End.

Thanks for following the guide. Any issues, please contact us!