

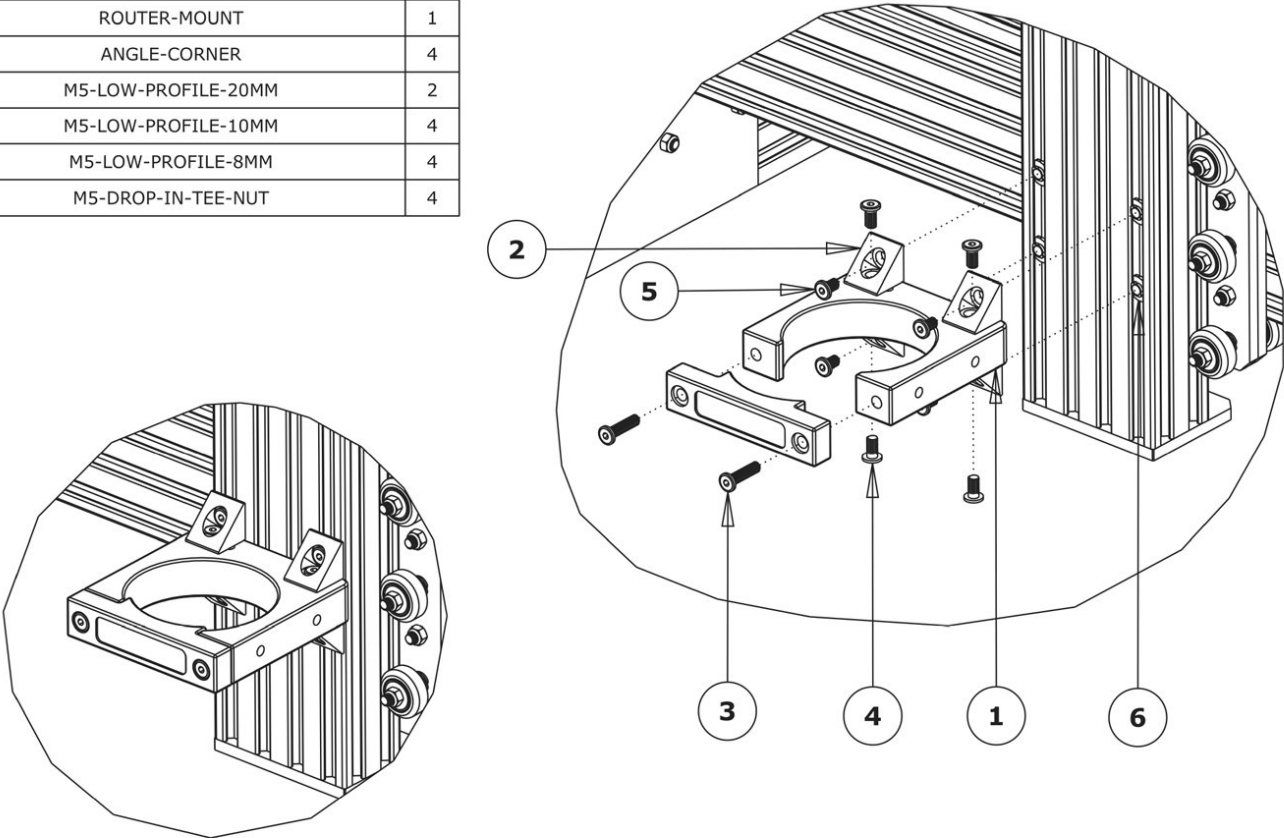


# 9. Assemble Router Mount

This guide will go through how to assemble the WorkBee Router Mount

Written By: Ryan Lock

ITEM NO	DESCRIPTION	QTY
1	ROUTER-MOUNT	1
2	ANGLE-CORNER	4
3	M5-LOW-PROFILE-20MM	2
4	M5-LOW-PROFILE-10MM	4
5	M5-LOW-PROFILE-8MM	4
6	M5-DROP-IN-TEE-NUT	4

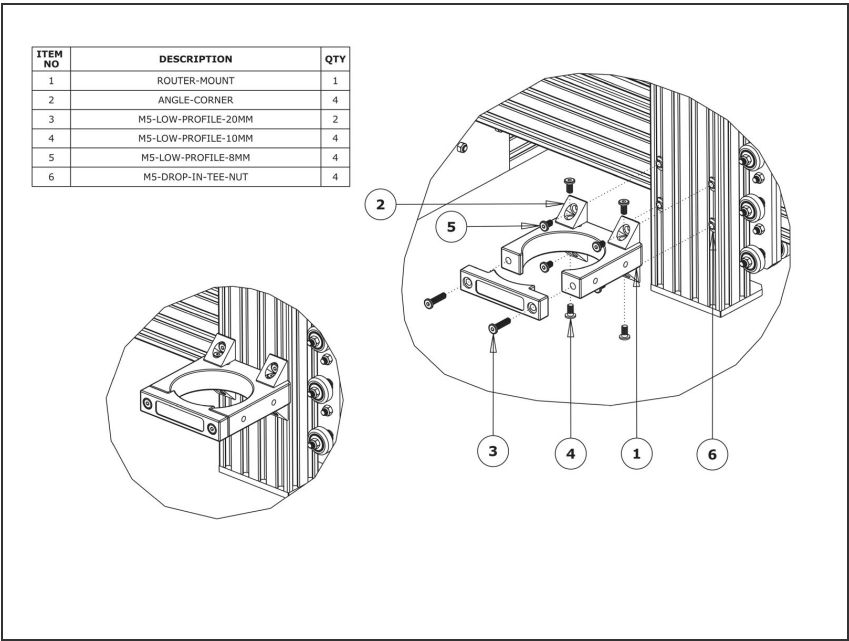




## PARTS:

- Router Mount (1)
- Angle Corner (4)
- M5 Low Profile Bolt - 20mm (2)
- M5 Low Profile Bolt - 10mm (4)
- M5 Low Profile Bolt - 8mm (4)
- M5 Drop-In Tee-Nut (4)

Step 1 — Router Mount Assembly



- On the outer most holes on the Router-Mount attach 4 x Angle-Corners using 4 x M5- Low-Profile-10mm Bolts.  
**⚠ Make sure the angle corners are flush with the back of the Router-Mount.**
- Attach the Router-Mount to the Z-Axis extrusions using 4 x M5-Low-Profile-8mm Bolts and 4 x M5-Drop-In-Tee-Nuts.  
**⚠ Make sure the Router-Mount is perpendicular to the extrusion.**
- ⓘ The Router-Mount position depends on what jobs you are planning to do, however 1/3 of the way up the extrusion is a good position for normal work.
- Clamp the router inside the Router-Mount using the front plate and two M5-Low-Profile- 20mm Bolts.

Thanks for following the guide. Any issues, please contact us!