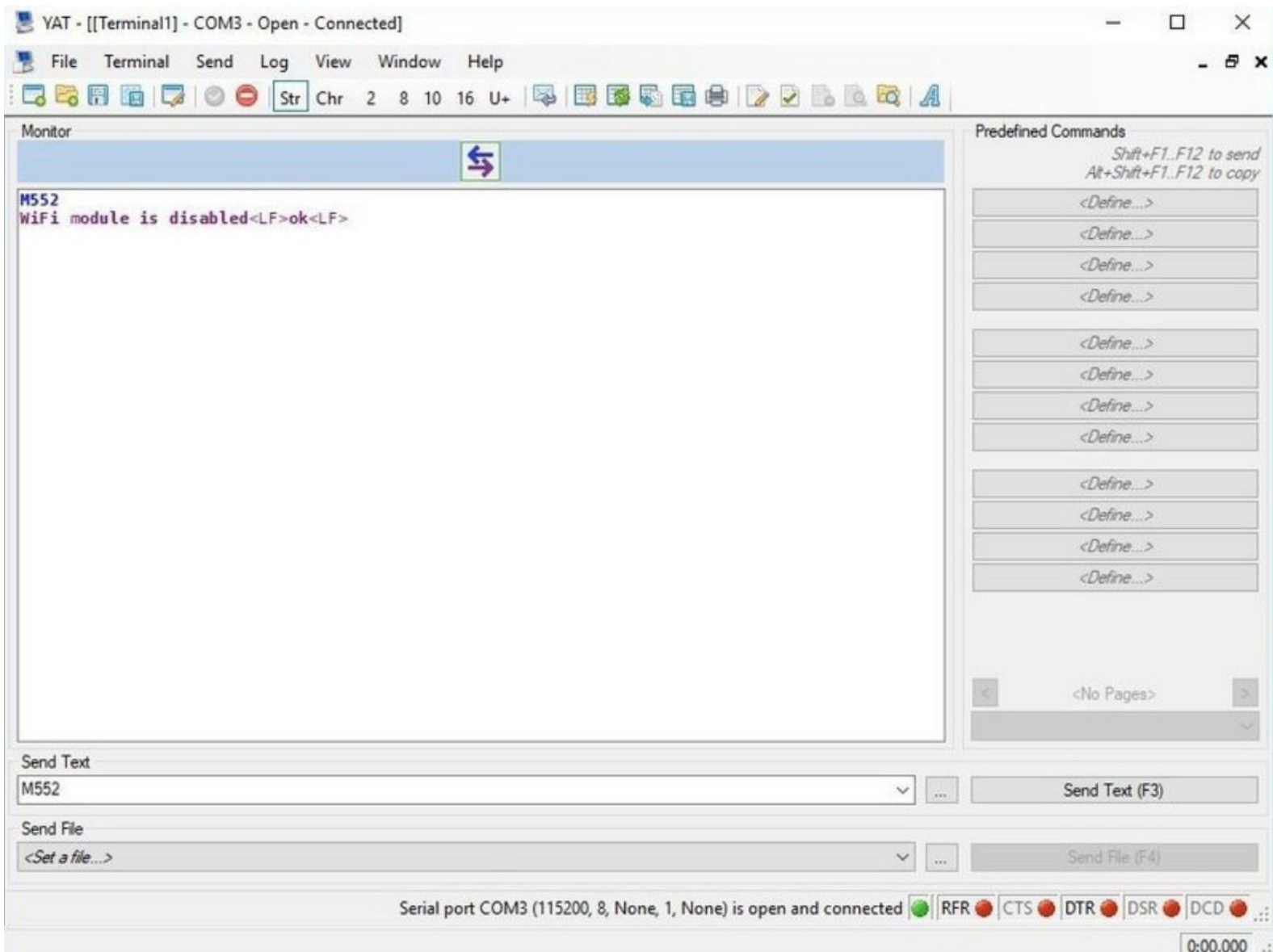




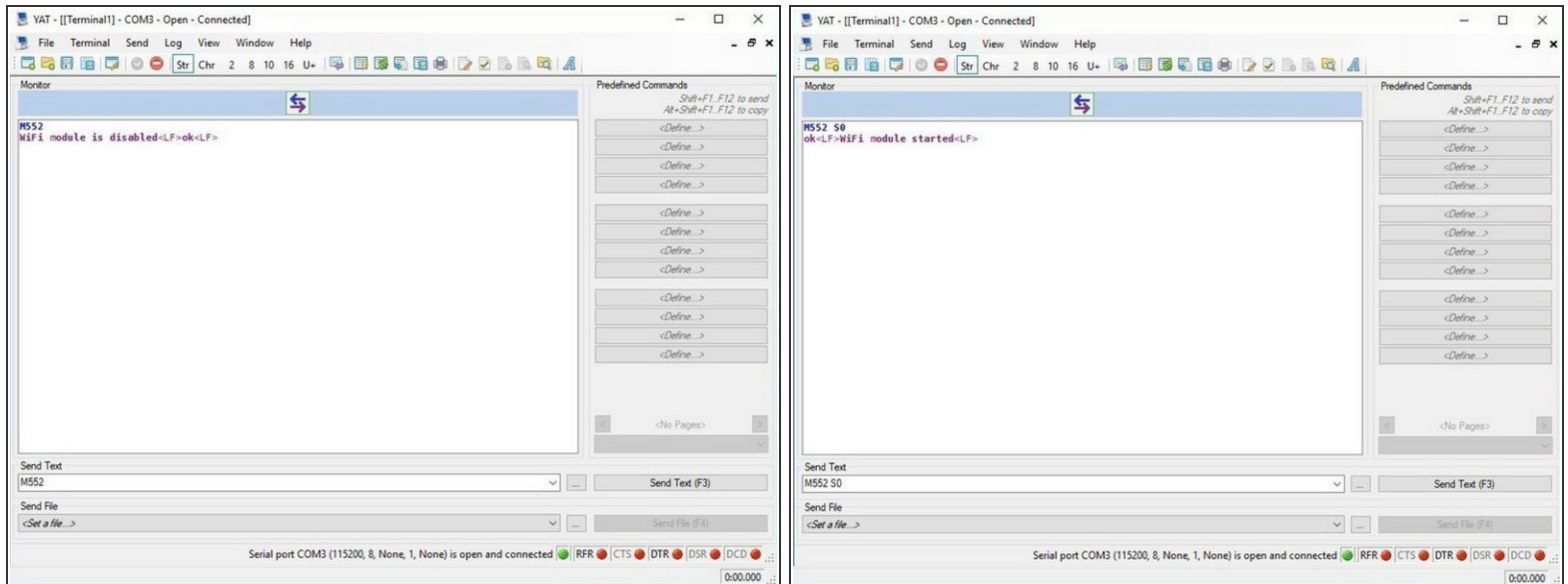
## 2. Connecting your Duet to a Network - Access Point

This Guide will provide the steps in setting up your Duet Controller as an Access Point.

Written By: Ryan Christy

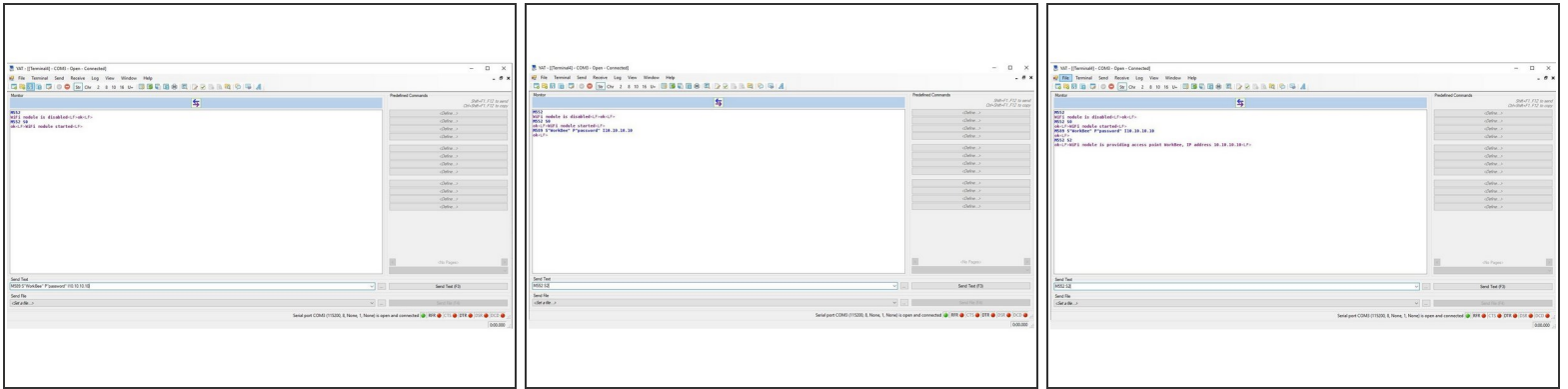


## Step 1 — Enable Network Module



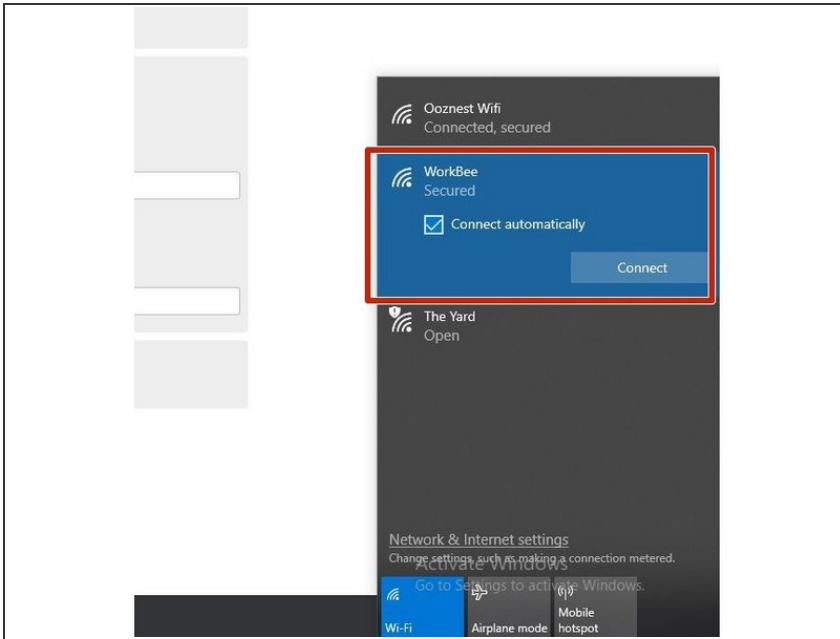
- First, check the status of the Wifi Module by sending command "M552" to Duet.
- If Duet returns Wifi or Ethernet module is disabled, put it into idle mode it by sending command "M552 S0". If it returns Wifi or Ethernet module is idle, proceed to the next step.

## Step 2 — Duet 2 Wifi only - Set Access Point



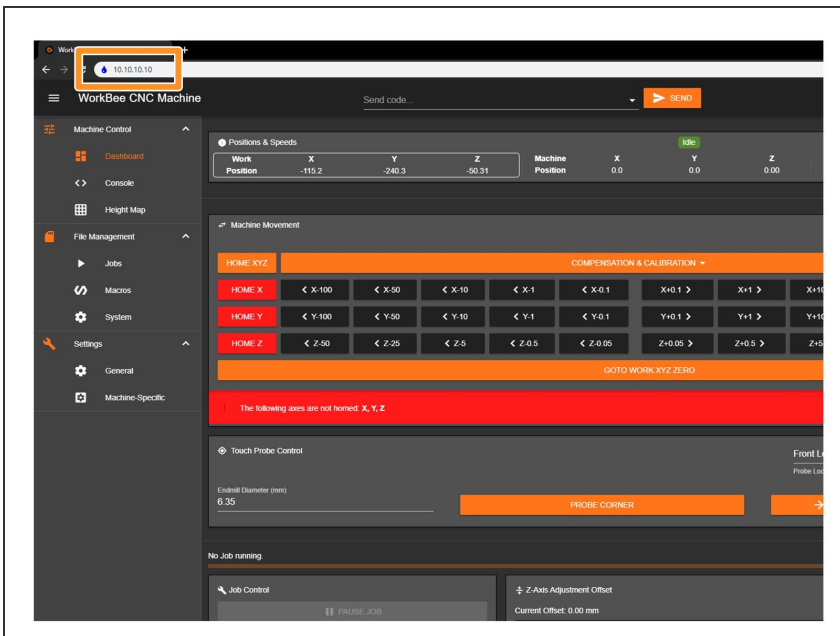
- Use the command **M589** as shown below. Use double quotation marks, but substitute the SSID and WiFi password for your own WorkBee network.
- **M589 S"your-machine-name" P"your-password" I-ip-adress**
  - ① As a preset we use the following setup **M589 S"WorkBee" P"password" I10.10.10.10**
- Send command **M552 S2** to turn on your Duets Access Point
  - After a moment, Duet will confirm the connection and the IP address of the Duet controller which we entered in previously.
- Your Duet Wifi is now creating its own Access Point. ( The blue light should be on the Wifi module of the controller )
- ① Note: M589 saves the SSID and password to the Duet 2 Wifi. You do not need to run this command every time the board is started.

## Step 3 — Connect to WorkBee Wifi



- Using your computers Wifi or Connection settings connect to the Displayed WorkBee Network.
- For this step add in your password that we preset in the YAT Terminal with the M589 Command.

## Step 4 — Check Access to Duet Web Interface



- Open your browser and type the IP address assigned to the Duet. We have used 10.10.10.10 as an example.
- You should now see the main control page for the Duet!
- ① Remember to Bookmark the Website and add it to your favourites for easier future access.

Thanks for following the guide. Any issues, please contact us!